

VORTAC LVZ <b>111.6</b> Chan <b>53</b>	APP CRS <b>080°</b>	Rwy Idg TDZE Apt Elev	<b>N/A</b> <b>N/A</b> <b>1729</b>
--	------------------------	-----------------------------	---

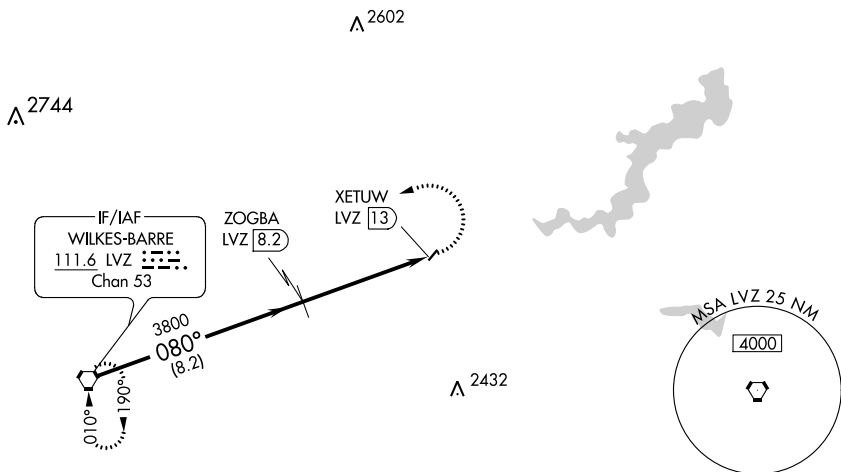
# VOR/DME-B

SPRING HILL (70N)

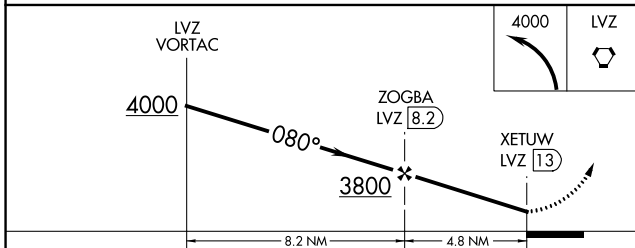
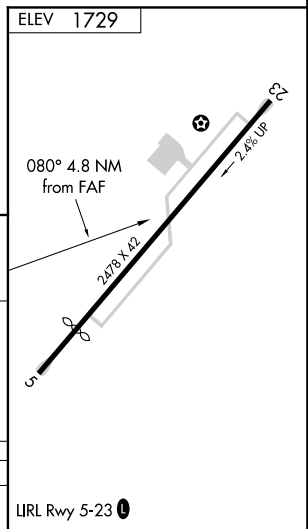
**⚠** Procedure NA at night. Use Mount Pocono altimeter setting, when not received, use Wilkes-Barre/Scranton altimeter setting and increase all MDA 100 feet and Cat B Circling visibility 1/2 mile. Helicopter visibility reduction below 1 SM NA.

**MISSED APPROACH:** Climbing left turn to 4000 direct LVZ VORTAC and hold.

MOUNT POCONO ASOS <b>120.275</b>	WILKES-BARRE APP CON <b>126.3 256.7</b>	CTAF <b>0</b> <b>122.9</b>
-------------------------------------	--	-------------------------------



Procedure NA for arrivals on LVZ VORTAC airway radials 047 CW 124.



CATEGORY	A	B	C	D
<b>C</b> CIRCLING	2600-1¼ 871 (900-1¼)	2620-1¼ 891 (900-1¼)	NA	

IIRL Rwy 5-23 **0**