

APP CRS 232°	Rwy Idg TDZE Apt Elev	N/A N/A 1729
------------------------	-----------------------------	---

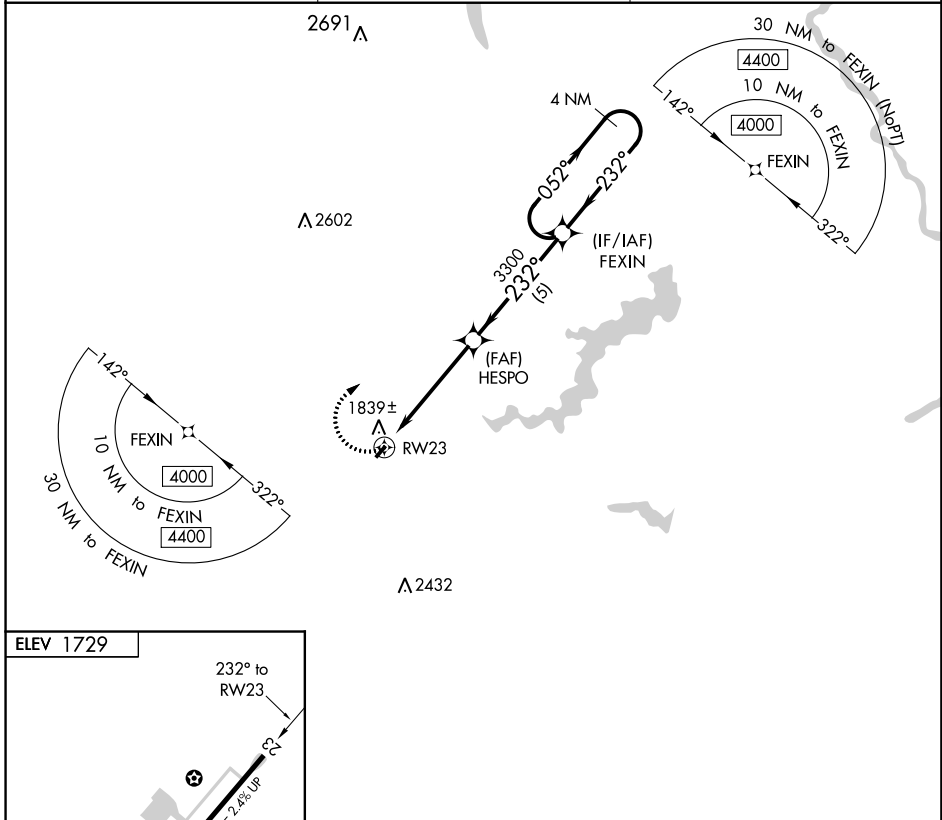
RNAV (GPS)-A

SPRING HILL (70N)

▼ DME/DME RNP-0.3 NA. Procedure NA at night. Use Mount Pocono altimeter setting; when not received, use Wilkes-Barre/Scranton altimeter setting and increase all MDA 100 feet and Cat B visibility ¼ mile. Helicopter visibility reduction below 1 SM NA.

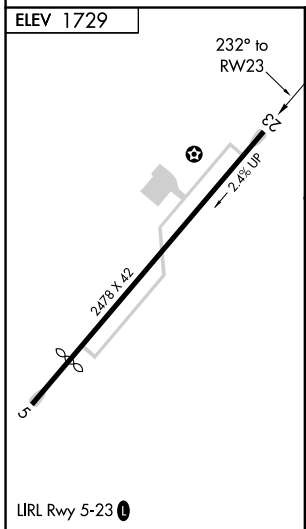
▲ NA MISSED APPROACH: Climbing right turn to 4000 direct FEXIN and hold.

MOUNT POCONO ASOS 120.275	WILKES-BARRE APP CON 126.3 256.7	CTAF 122.9
-------------------------------------	--	-------------------



NE-4, 07 DEC 2017 to 04 JAN 2018

NE-4, 07 DEC 2017 to 04 JAN 2018



4000	FEXIN	Visual Segment - Obstacles.			
CATEGORY	A	B	C	D	
C CIRCLING	2600-1¼ 871 (900-1¼)	2620-1¼ 891 (900-1¼)	NA		