

| | | | |
|--|------------------------|-----------------------------|---|
| WAAS CH 42822 W24A | APP CRS 247° | Rwy Idg TDZE Apt Elev | 5500 665 665 |
|--|------------------------|-----------------------------|---|

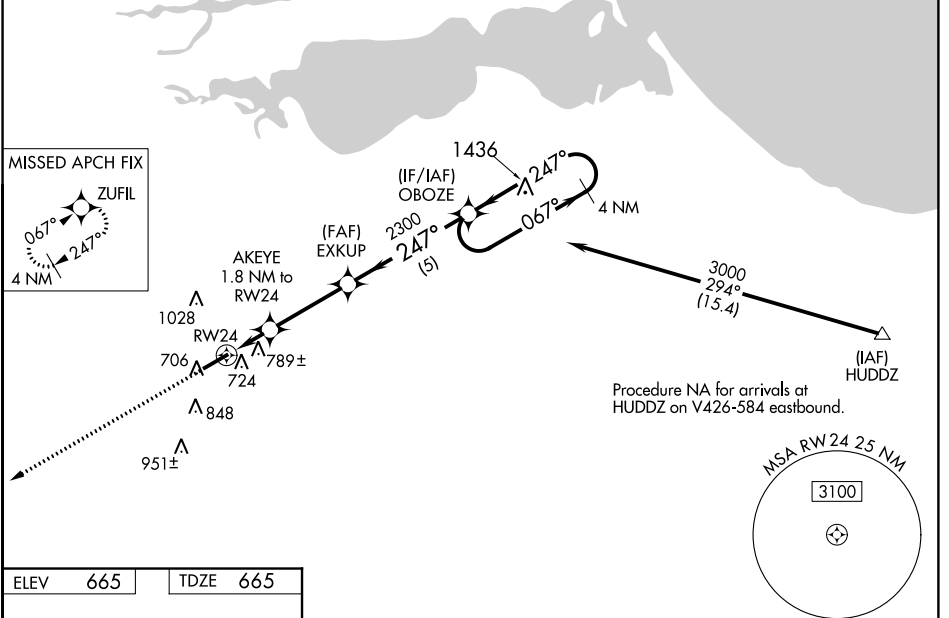
RNAV (GPS) RWY 24

SANDUSKY COUNTY RGNL (S24)

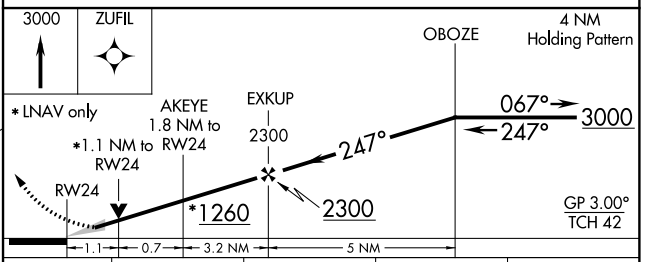
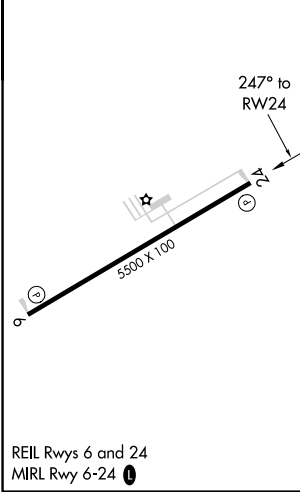
▼ **▲** NA
DME/DME RNP-0.3 NA. VDP NA with Toledo Express altimeter setting. Baro-VNAV NA with Toledo express altimeter setting. For uncompensated Baro-VNAV systems, LNAV/VNAV NA below -16°C (4°F) or above 54°C (130°F). When local altimeter setting not received, use Toledo Express altimeter setting and increase all DA 93 feet and all MDA 100 feet; increase LPV and LNAV/VNAV all Cats visibility 3/8 mile, LNAV Cat C and D visibility 1/4 mile and Circling Cat C and D visibility 1/2 mile.

MISSED APPROACH: Climb to 3000, direct ZUFIL and hold.

| | | |
|--------------------------|--|--------------------------------|
| AWOS-3 119.575 | MANSFIELD APP CON★ 127.35 390.8 (360°- 180°) TOLEDO APP CON 126.1 307.0 (180°-360°) | UNICOM 123.05 (CTAF) |
|--------------------------|--|--------------------------------|



| | | | |
|------|-----|------|-----|
| ELEV | 665 | TDZE | 665 |
|------|-----|------|-----|



| CATEGORY | A | B | C | D |
|--------------|-----------------------|-----------------------|-----------------------|-------------------------------|
| LPV DA | | 885-3/4 | 220 (300-3/4) | |
| LNAV/VNAV DA | | 1103-1 1/2 | 438 (500-1 1/2) | |
| LNAV MDA | 1040-1 | 375 (400-1) | 1040-1 1/8 | 375 (400-1 1/8) |
| CIRCLING | 1120-1 455 (500-1) | 1160-1 495 (500-1) | 1380-2 715 (800-2) | 1380-2 1/4 715 (800-2 1/4) |

EC-2, 07 DEC 2017 to 04 JAN 2018

EC-2, 07 DEC 2017 to 04 JAN 2018