

WAAS CH <b>77716</b> <b>W30A</b>	APP CRS <b>296°</b>	Rwy Idg <b>5828</b> TDZE <b>16</b> Apt Elev <b>16</b>
--	------------------------	---

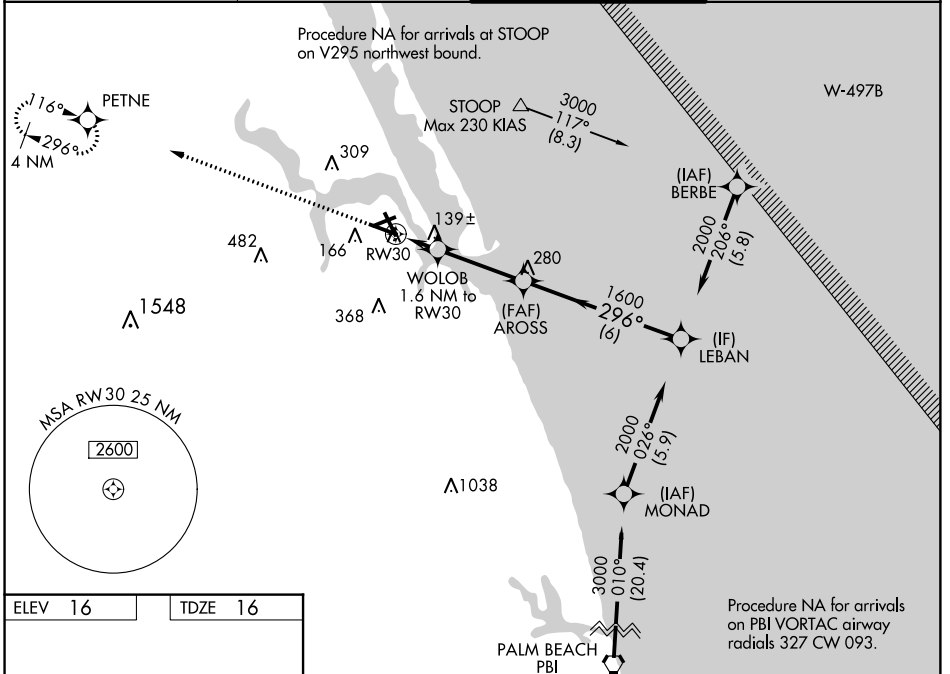
# RNAV (GPS) RWY 30

WITHAM FIELD (SUA)

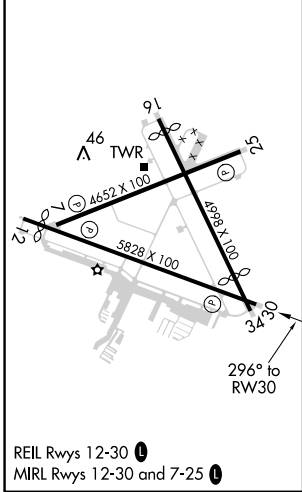
**⚠** Circling for Rwy 07 NA at night. Baro-VNAV NA when using Palm Beach Intl altimeter setting. For uncompensated Baro-VNAV systems, LNAV/VNAV NA below 4°C (40°F) or above 54°C (130°F). DME/DME RNP-0.3 NA. Helicopter visibility reduction below 3/4 SM NA. When local altimeter setting not received, use Palm Beach Intl altimeter setting and increase all DA 71 feet and all MDA 80 feet and increase LPV and LNAV/VNAV all Cats and LNAV Cats C/D visibility 1/4 mile.

**⚠** MISSED APPROACH: Climb to 2000 direct PETNE and hold.

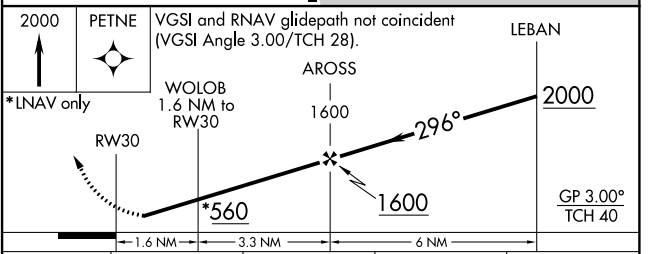
ATIS <b>134.475</b>	PALM BEACH APP CON <b>132.8</b>	STUART TOWER ★ <b>126.6 (CTAF) 0</b>	GND CON <b>121.7</b>
------------------------	------------------------------------	---	-------------------------



ELEV 16	TDZE 16
---------	---------



REIL Rws 12-30 **0**  
MIRL Rws 12-30 and 7-25 **0**



CATEGORY	A	B	C	D
LPV DA		266-7/8	250 (300-7/8)	
LNAV/VNAV DA		404-13/8	388 (400-13/8)	
LNAV MDA	400-1	384 (400-1)	400-1 1/8	384 (400-1 1/8)
CIRCLING	480-1	464 (500-1)	480-1 1/2 464 (500-1 1/2)	580-2 564 (600-2)

SE-3, 07 DEC 2017 to 04 JAN 2018

SE-3, 07 DEC 2017 to 04 JAN 2018