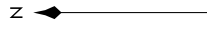


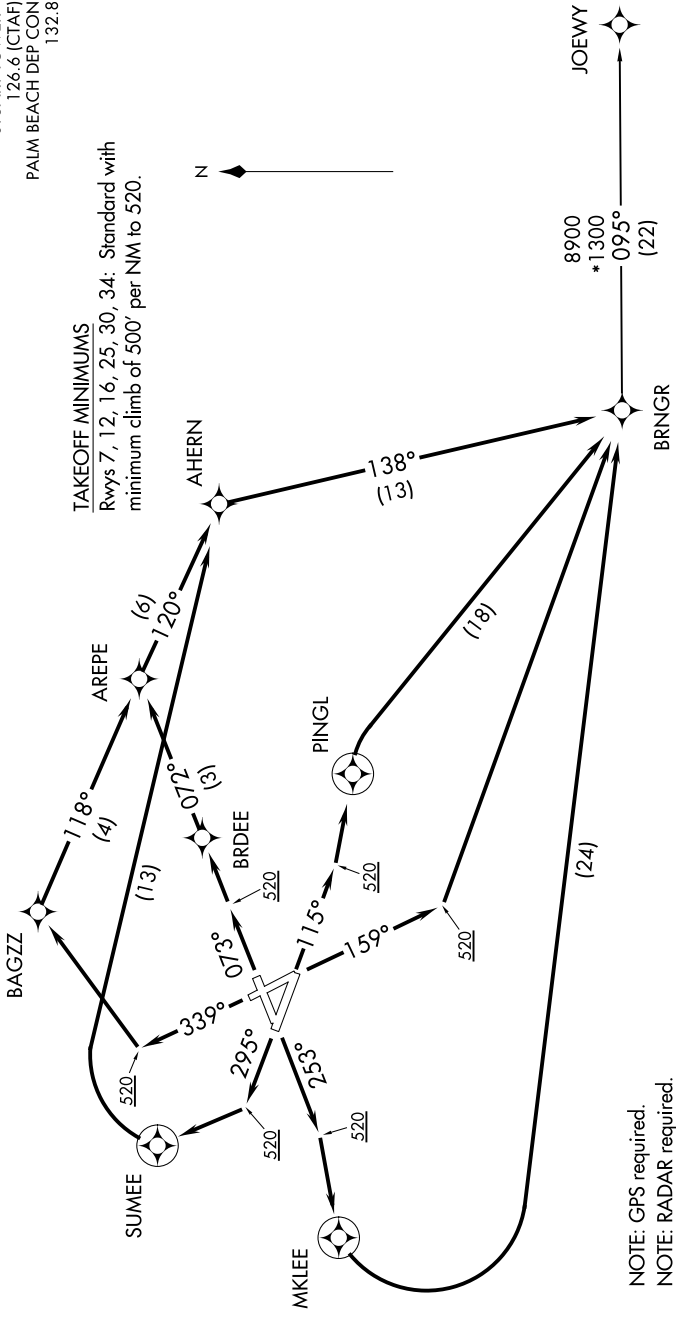
BRNGR TWO DEPARTURE (RNAV)

ATIS
134.475
GND CON
121.7
STUART TOWER*
126.6 (CTAF)
PALM BEACH DEP CON
132.8

TAKEOFF MINIMUMS
Rvys 7, 12, 16, 25, 30, 34: Standard with
minimum climb of 500' per NM to 520.



**TOP ALTITUDE:
3000**



NOTE: GPS required.
NOTE: RADAR required.
NOTE: RNAV 1.
NOTE: For turbojet/turboprop aircraft only.
NOTE: Transponder code will be issued via SUA ground control or PBI APP CON when tower closed.

NOTE: Chart not to scale.

(CONTINUED ON NEXT PAGE)

SE-3: 07 DEC 2017 to 04 JAN 2018

SE-3: 07 DEC 2017 to 04 JAN 2018

BRNGR TWO DEPARTURE (RNAV)