

WAAS CH 65899 W11A	APP CRS 114°	Rwy Idg TDZE Apt Elev	3601 6 6
--	------------------------	-----------------------------	-------------------------------------

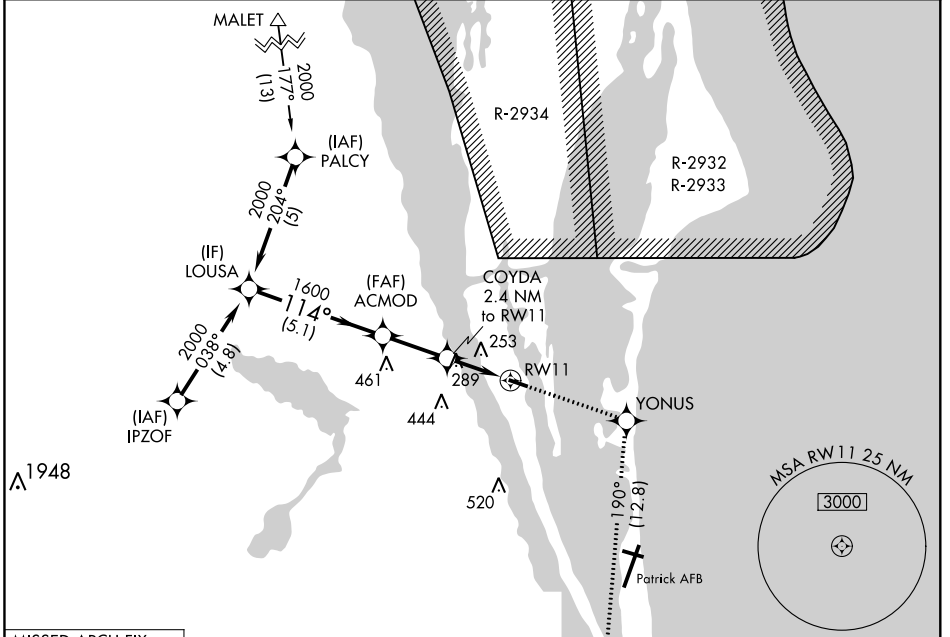
RNAV (GPS) RWY 11

MERRITT ISLAND (COI)

⚠ DME/DME RNP-0.3 NA. Helicopter visibility reduction below 1 SM NA. When local altimeter setting not received, use Melbourne altimeter setting and increase LPV DA to 329 and all MDA 40 feet, increase LPV all Cats visibility 1/8 mile. Night landing: Rwy 11 NA.

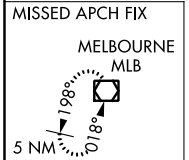
MISSED APPROACH: Climb to 3000 direct YONUS and on track 190° to MLB VOR/DME and hold.

AWOS-3 119.025	ORLANDO APP CON 134.95 281.425	UNICOM 122.975 (CTAF) 0
--------------------------	--	-----------------------------------



SE-3, 07 DEC 2017 to 04 JAN 2018

SE-3, 07 DEC 2017 to 04 JAN 2018



Procedure NA for arrivals on MLB VORTAC airway radials 276 CW 329.

VGSI and RNAV glidepath not coincident (VGSI Angle 3.00/TCH 30).

LOUSA	ACMOD	COYDA	RW11	MLB
2000	1600	2.4 NM to RW11	2.4 NM	3000
GP 3.00° TCH 33	114°	1600	* 800	tr 190°
5.1 NM		2.4 NM		2.4 NM
CATEGORY	A	B	C	D
LPV DA	291-1	285 (300-1)		NA
LNAV MDA	600-1	594 (600-1)		NA
CIRCLING	600-1	620-1		NA
	594 (600-1)	614 (700-1)		

