

VOR/DME OTB 109.8 Chan 35	APP CRS 015°	Rwy Idg TDZE Apt Elev	N/A N/A 384
---	------------------------	-----------------------------	--

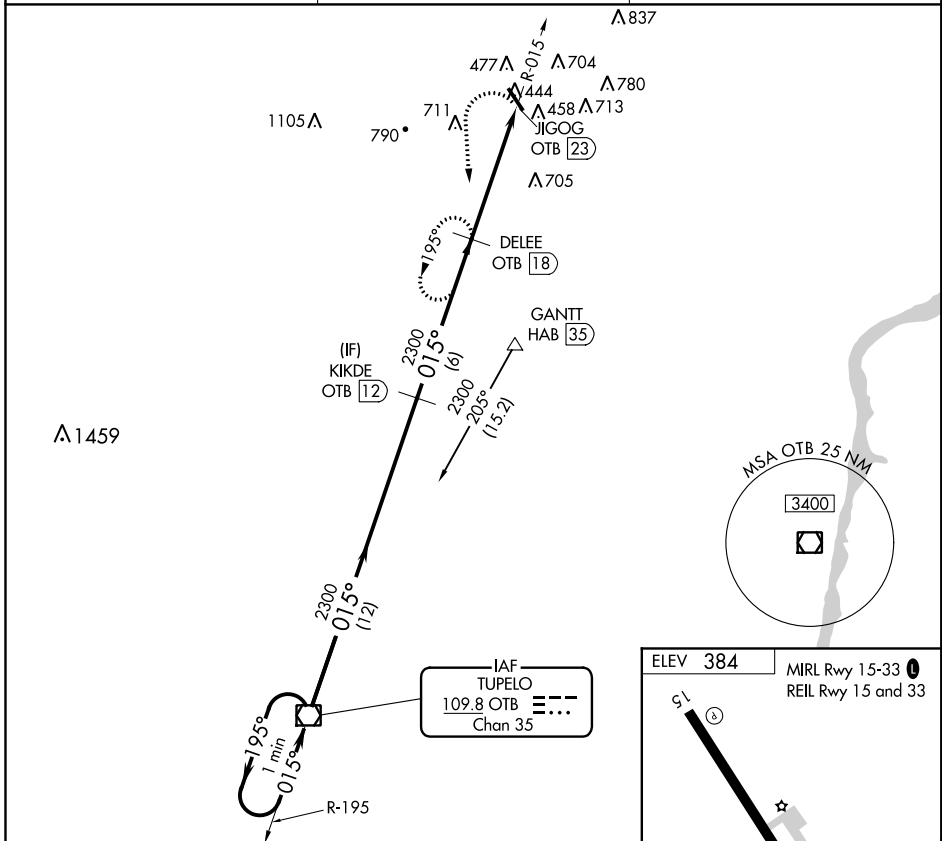
VOR/DME-A

BOONEVILLE/BALDWIN (8M1)

NA Visibility reduction by helicopters NA. Use Corinth altimeter setting, when not received, use Tupelo altimeter setting and increase all MDA 20 feet and increase Cats C/D visibility ¼ mile.

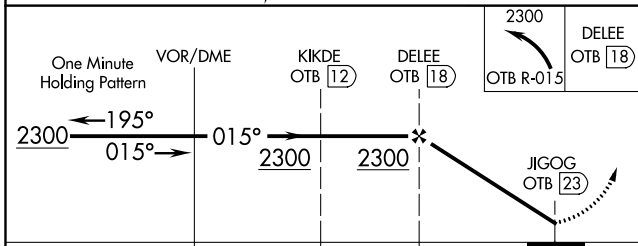
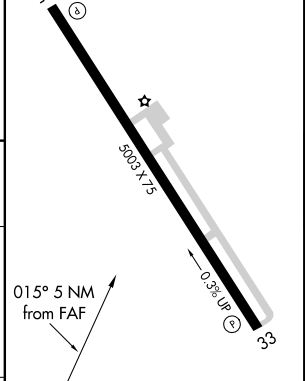
MISSED APPROACH: Climbing left turn to 2300 via OTB VOR/DME R-015 to DELEE/OTB 18 DME and hold.

CORINTH AWOS-3 118.675	MEMPHIS CENTER 135.9 273.55	UNICOM 122.8 (CTAF) 0
----------------------------------	---------------------------------------	---------------------------------



IAF
TUPELO
109.8 OTB
Chan 35

ELEV 384
MIRL Rwy 15-33
REIL Rwy 15 and 33



CATEGORY	A	B	C	D	FAF to MAP 5 NM					
CIRCLING	1120-1 736 (800-1)	1120-1¼ 736 (800-1¼)	1120-2 736 (800-2)	1120-2¼ 736 (800-2¼)	Knots	60	90	120	150	180
					Min:Sec	5:00	3:20	2:30	2:00	1:40

SC-4, 07 DEC 2017 to 04 JAN 2018

SC-4, 07 DEC 2017 to 04 JAN 2018