

VORTAC CQY 114.8 Chan 95	APP CRS 285°	Rwy Idg TDZE Apt Elev N/A N/A 500
--	------------------------	--

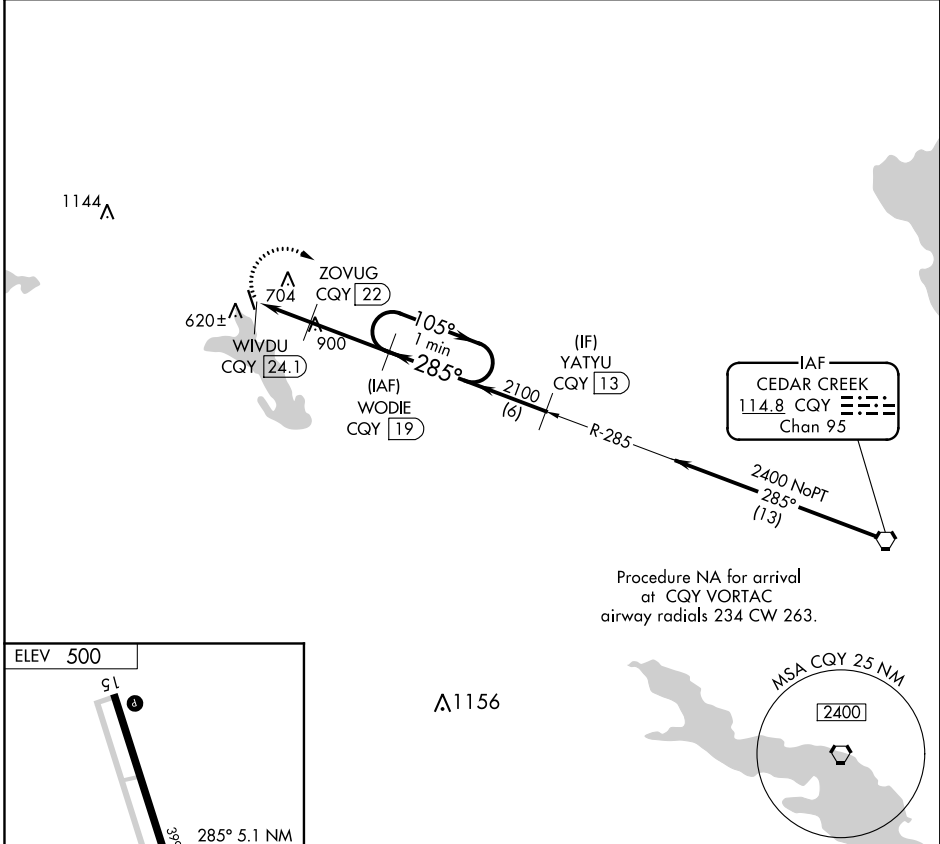
VOR/DME-A

ENNIS MUNI (F41)

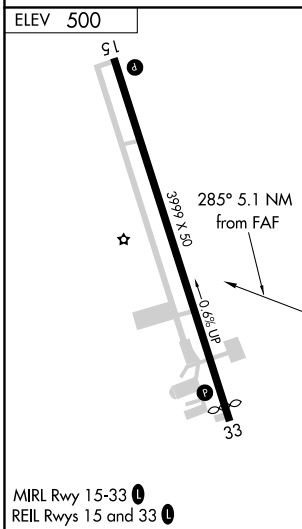
NA Use Lancaster altimeter setting; when not received, use Mid-way Rgnl and increase all MDA 40 feet

MISSED APPROACH: Climbing right turn to 2400 on CQY R-285 to WODIE/19 DME and hold.

LANCASTER AWOS-3 118.975	REGIONAL APP CON 125.2 343.65	CTAF 122.9
------------------------------------	---	----------------------



Procedure NA for arrival at CQY VORTAC
airway radials 234 CW 263.



CATEGORY	A	B	C	D
	1020-1 520 (600-1)	1040-1¼ 540 (600-1¼)	1040-1½ 540 (600-1½)	NA

SC-2: 07 DEC 2017 to 04 JAN 2018

SC-2: 07 DEC 2017 to 04 JAN 2018