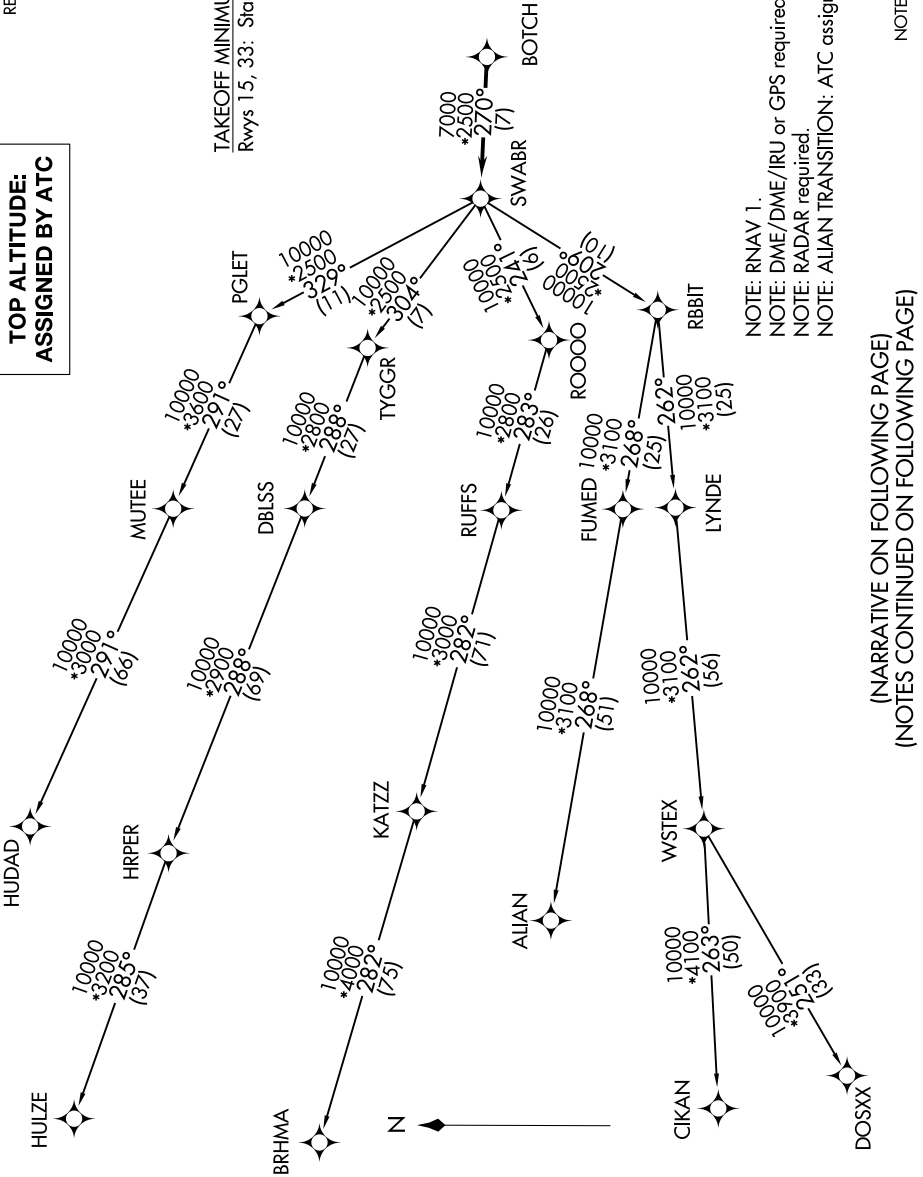


SWABR FIVE DEPARTURE (RNAV)

REGIONAL DEP CON
125.2 343.65
CTAF
122.9

**TOP ALTITUDE:
ASSIGNED BY ATC**

TAKEOFF MINIMUMS
Rwys 15, 33: Standard.



NOTE: RNAV 1.
 NOTE: DME/DME/IRU or GPS required.
 NOTE: RADAR required.
 NOTE: ALIAN TRANSITION: ATC assigned only.

NOTE: Chart not to scale.

(NARRATIVE ON FOLLOWING PAGE)
(NOTES CONTINUED ON FOLLOWING PAGE)

SWABR FIVE DEPARTURE (RNAV)