

VOR/DME CIP 112.9 Chan 76	APP CRS 120°	Rwy Idg TDZE Apt Elev N/A N/A 1439
---	------------------------	--

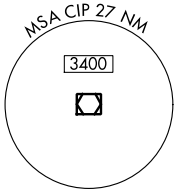
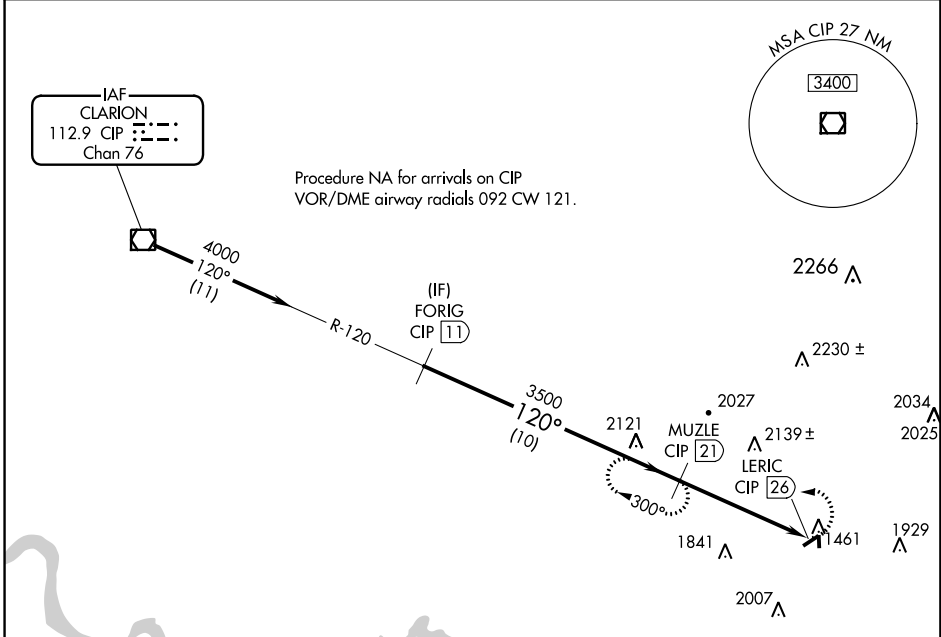
VOR/DME-A

PUNXSUTAWNEY MUNI (N35)

NA Use Indiana Co-Jimmy Stewart Fld altimeter setting.
Helicopter visibility reduction below 3/4 SM NA.

MISSED APPROACH: Climbing left turn to 3500 via CIP R-120 to MUZLE/21 DME and hold.

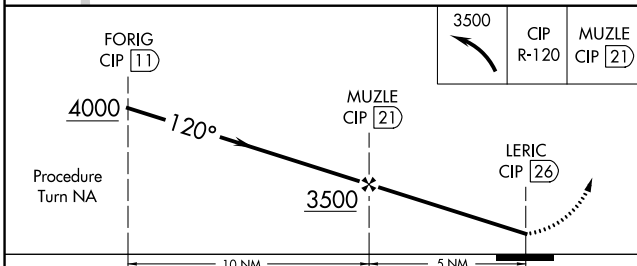
JIMMY STEWART FIELD AWOS-3 126.625	CLEVELAND CENTER 126.72 291.65	UNICOM 123.0 (CTAF)
---	--	-------------------------------



IAF
CLARION
112.9 CIP
Chan 76

NE-4, 07 DEC 2017 to 04 JAN 2018

NE-4, 07 DEC 2017 to 04 JAN 2018



CATEGORY	A	B	C	D
CIRCLING	2460-1¼ 1021 (1100-1¼)	2460-1½ 1021 (1100-1½)	NA	

ELEV 1439

120° 5 NM from FAF

3003 X 50

0.9% UP

61

2026 X 100

1

REIL Rwys 1, 6, 19, and 24 **1**

MIRL Rwys 1-19 and 6-24 **1**