

APP CRS 239°	Rwy Idg TDZE Apt Elev	N/A N/A 1395
------------------------	-----------------------------	---

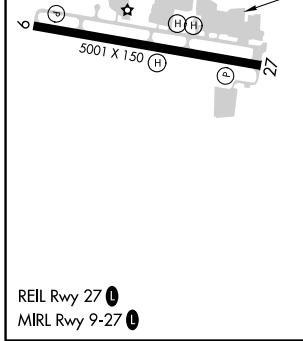
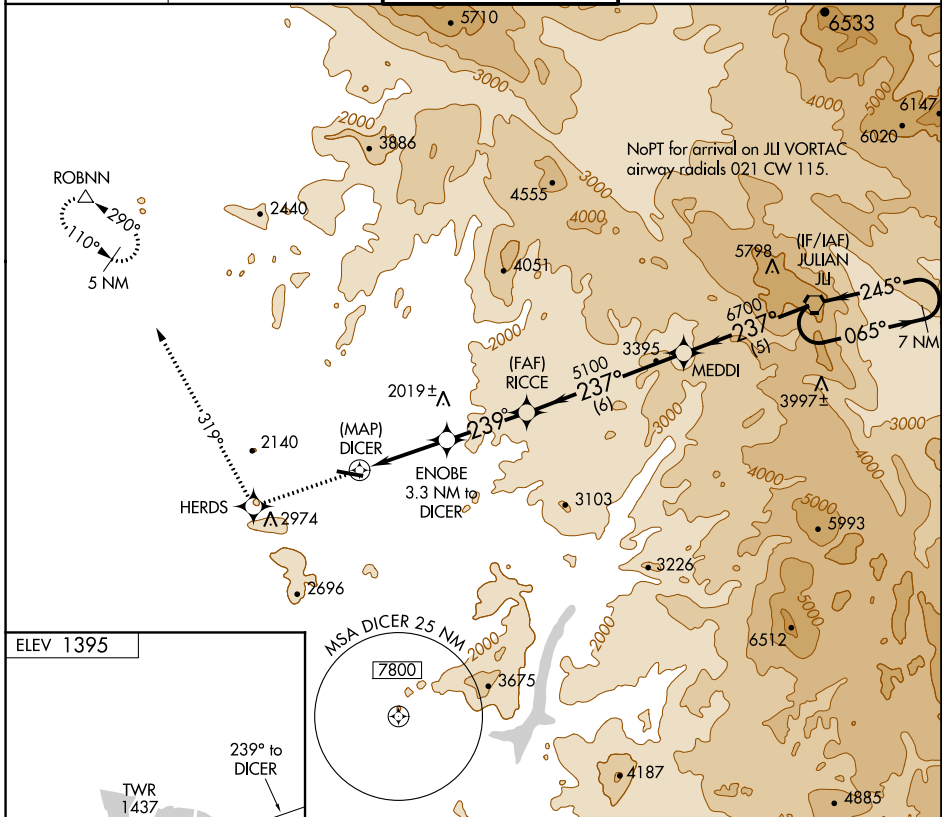
RNAV (GPS)-B

RAMONA (R.NM)

▽ DME/DME RNP-0.3 NA.
▲ Circling NA north of Rwy 9-27.
 When local altimeter setting not received, use Gillespie Field altimeter setting and increase all MDA 180 feet.

MISSED APPROACH: Climb to 5000 direct HERDS and via track 319° to ROBNN and hold.

ATIS 132.025	SOCAL APP CON 132.2 269.1	RAMONA TOWER ★ 119.875 (CTAF) 0	GND CON 121.65	UNICOM 122.95
------------------------	-------------------------------------	---	--------------------------	-------------------------



5000	HERDS	IR 319°	ROBNN	7 NM Holding Pattern
CATEGORY	A	B	C	D
CIRCLING	2780-1¼ 1385 (1400-1¼)	2780-1½ 1385 (1400-1½)	2780-3 1385 (1400-3)	NA

SW-3, 07 DEC 2017 to 04 JAN 2018

SW-3, 07 DEC 2017 to 04 JAN 2018