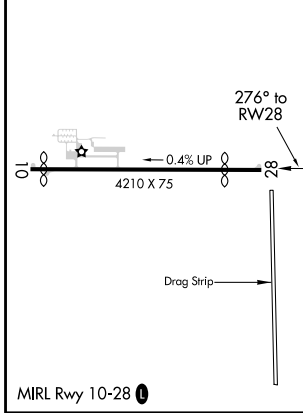
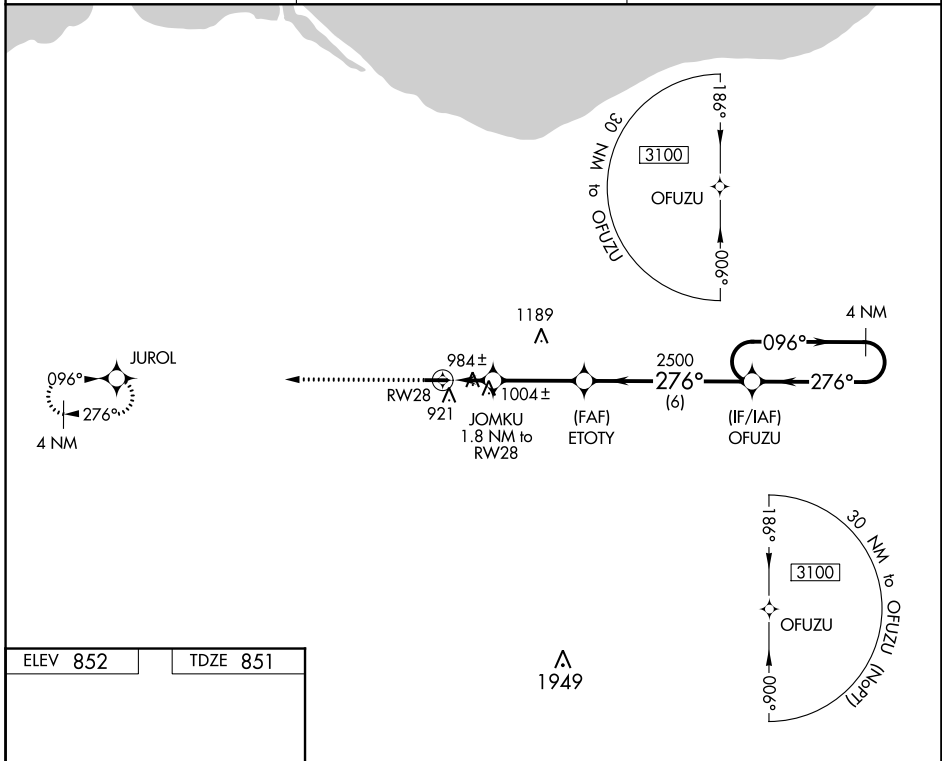


WAAS CH 86835 W28A	APP CRS 276°	Rwy Idg TDZE Apt Elev	3542 851 852
--	------------------------	-----------------------------	---

RNAV (GPS) RWY 28

NORWALK-HURON COUNTY (5A1)

<p>▼ Use Cleveland-Hopkins Intl altimeter setting. DME/DME RNP-0.3 NA. ▲ NA Procedure NA at night. Helicopter visibility reduction below 1 SM NA.</p>	<p>MISSED APPROACH: Climb to 3000 direct JUROL and hold.</p>	
<p>CLEVELAND-HOPKINS INTL ASOS 127.85</p>	<p>MANSFIELD APP CON * 124.2 390.8</p>	<p>UNICOM 122.8 (CTAF) 0</p>



	3000	JUROL							
			JOMKU	ETOTY	OFUZU				4 NM Holding Pattern
			1.8 NM to RWY 28	3.00° TCH 40	2500				3100
			1.8 NM	3.3 NM	6 NM				
CATEGORY		A	B	C	D				
LP MDA		1320-1	469 (500-1)	1320-1 $\frac{3}{8}$ 469 (500-1 $\frac{3}{8}$)	NA				
LNAV MDA		1340-1	489 (500-1)	1340-1 $\frac{3}{8}$ 489 (500-1 $\frac{3}{8}$)	NA				
C CIRCLING		1400-1 548 (600-1)	1420-1 568 (600-1)	1440-1 $\frac{1}{2}$ 588 (600-1 $\frac{1}{2}$)	NA				