

VORTAC RBV 113.8 Chan 85	APP CRS 232°	Rwy Idg TDZE Apt Elev	3194 87 87
--	------------------------	-----------------------------	---------------------------------------

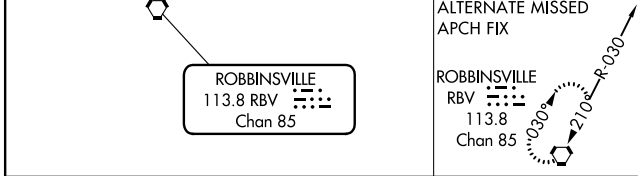
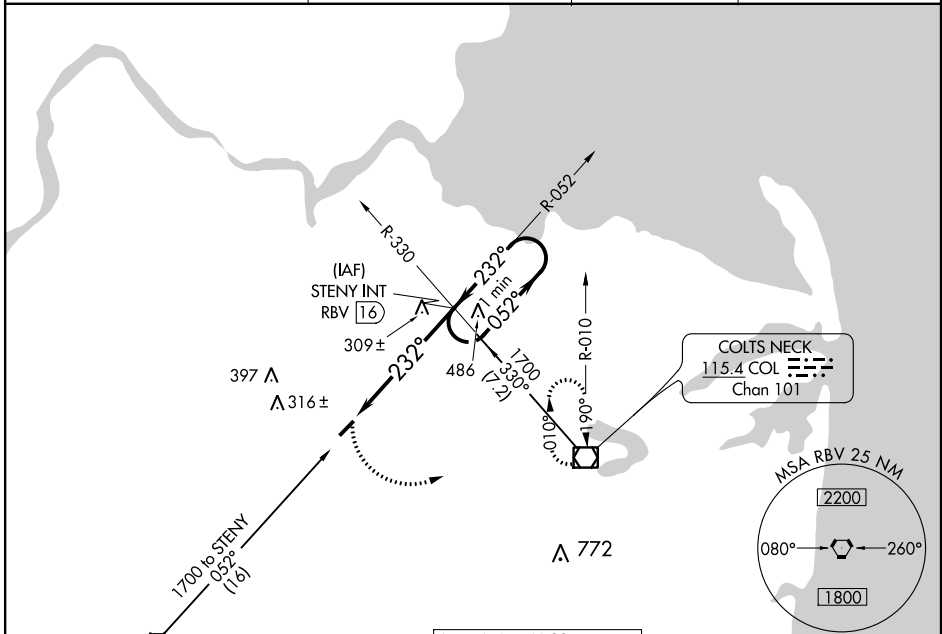
VOR RWY 24

OLD BRIDGE (3N6)

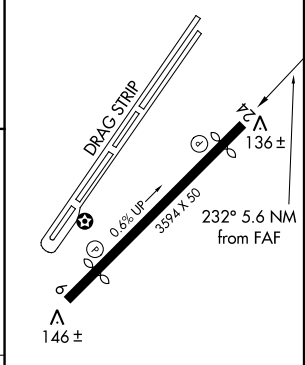
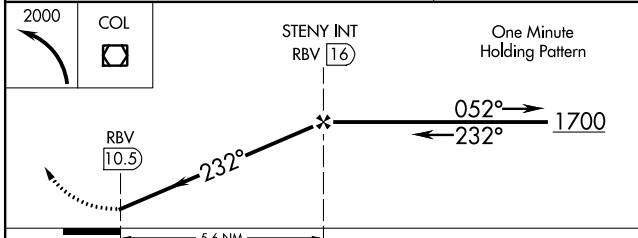
Procedure NA at night. Helicopter visibility reduction below 1 SM NA. Use Belmar/Farmingdale altimeter setting; when not received, use Wrightstown altimeter setting and increase all MDA 20 feet.

MISSED APPROACH: Climbing left turn to 2000 direct COL VOR/DME and hold.

BELMAR/FARMINGDALE AWOS-3PT 121.625	MC GUIRE APP CON 124.15 363.8	GCO 121.725	UNICOM 123.075 (CTAF)
---	---	-----------------------	---------------------------------



ELEV 87	TDZE 87
---------	---------



CATEGORY	A	B	C	D
S-24	600-1	513 (600-1)	NA	
CIRCLING	620-1 533 (600-1)	640-1 553 (600-1)	NA	

REIL Rwy 6 and 24
 MIRL Rwy 6-24

FAF to MAP 5.6 NM

Knots	60	90	120	150	180
Min:Sec	5:36	3:44	2:48	2:14	1:52

NE-2: 07 DEC 2017 to 04 JAN 2018

NE-2: 07 DEC 2017 to 04 JAN 2018