

APP CRS	Rwy Idg	3194
237°	TDZE	87
	Apt Elev	87

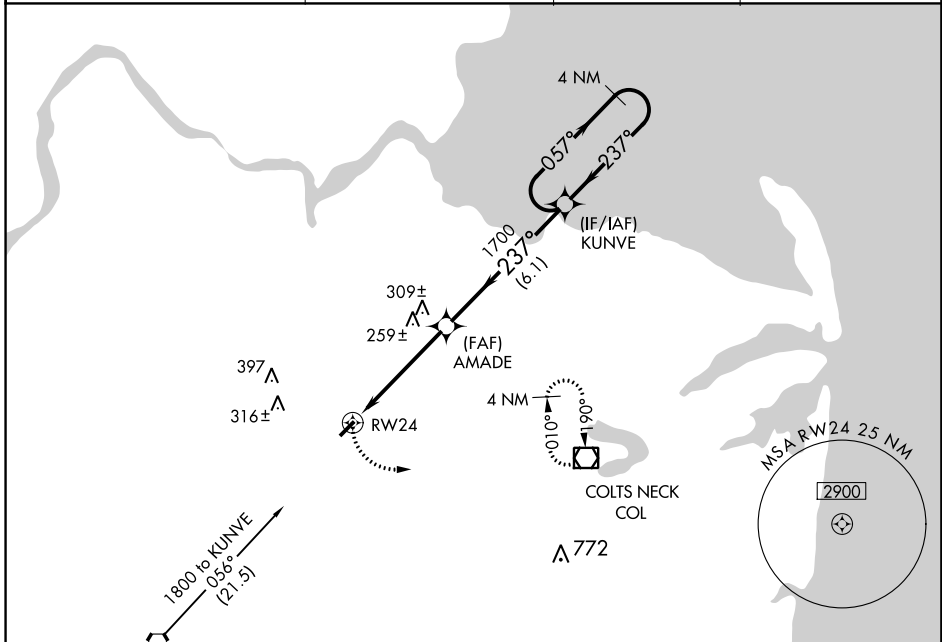
RNAV (GPS) RWY 24

OLD BRIDGE (3N6)

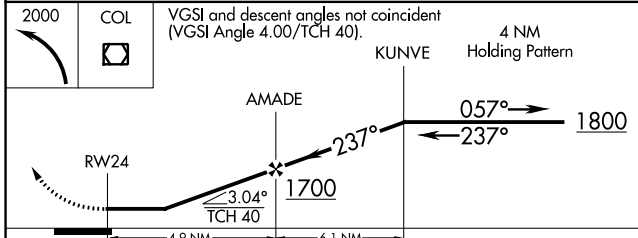
NA DME/DME RNP-0.3 NA. Procedure NA at night. Helicopter visibility reduction below 1 SM NA. Use Belmar/Farmingdale altimeter setting; when not received, use Wrightstown altimeter setting and increase all MDA 20 feet.

MISSED APPROACH: Climbing left turn to 2000 direct COL VOR/DME and hold.

BELMAR/FARMINGDALE AWOS-3PT 121.625	MC GUIRE APP CON 124.15 363.8	GCO 121.725	UNICOM 123.075 (CTAF)
---	---	-----------------------	---------------------------------



ELEV	87	TDZE	87
------	----	------	----



REIL Rwy 6 and 24
MIRL Rwy 6-24

CATEGORY	A	B	C	D
LNVA MDA	560-1	473 (500-1)	NA	
CIRCLING	620-1 533 (600-1)	640-1 553 (600-1)	NA	

NE-2. 07 DEC 2017 to 04 JAN 2018

NE-2. 07 DEC 2017 to 04 JAN 2018