

WAAS CH <b>48807</b> <b>W04A</b>	APP CRS <b>035°</b>	Rwy Idg TDZE Apt Elev	<b>7193</b> <b>24</b> <b>26</b>
--	------------------------	-----------------------------	---------------------------------------

# RNAV (GPS) RWY 4

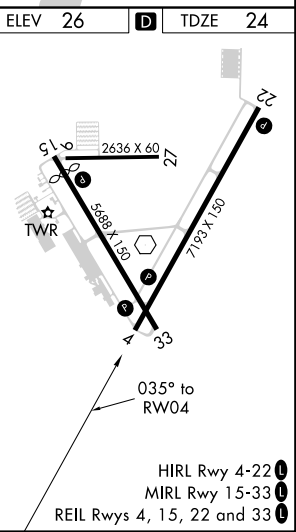
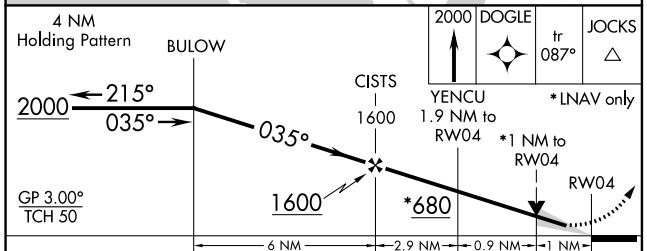
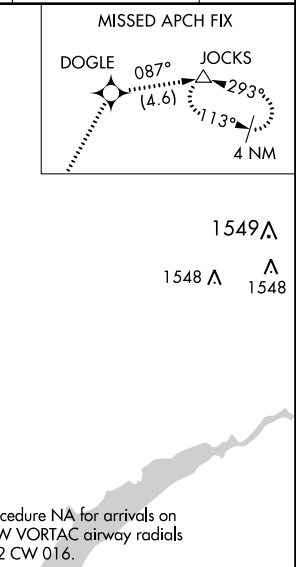
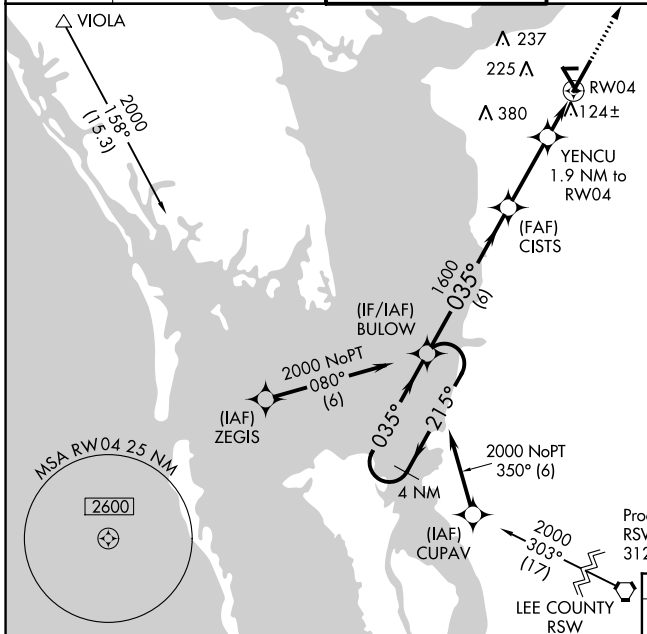
PUNTA GORDA (PGD)

**⚠** For uncompensated Baro-VNAV systems, LNAV/VNAV NA below 0°C (32°F) or above 54°C (130°F). DME/DME RNP-0.3 NA. When local altimeter setting not received, use Page Field altimeter setting and increase all DA 50 feet and all MDA 60 feet; increase LNAV/VNAV all Cats visibility ¼ mile, LNAV Cats C and D visibility ½ mile, and Circling Cats C and D visibility ¼ mile. Baro-VNAV and VDP NA when using Page Field altimeter setting.

**MISSED APPROACH:** Climb to 2000 direct DOGLE and track 087° to JOCKS and hold.

ASOS <b>135.675</b>	FORT MYERS APP CON * <b>125.15 306.2</b>	PUNTA GORDA TOWER * <b>121.0</b> (CTAF) <b>0</b>	GND CON <b>119.55</b>
------------------------	---	---	--------------------------

CLNC DEL <b>119.55</b> <b>127.05</b> when twr closed	UNICOM <b>122.975</b>
--	--------------------------



CATEGORY	A	B	C	D
LPV DA		224-¾	200 (200-¾)	
LNAV/VNAV DA		306-⅞	282 (300-⅞)	
LNAV MDA		380-1	356 (400-1)	
<b>C</b> CIRCLING	440-1 414 (500-1)	580-1 554 (600-1)	600-1½ 574 (600-1½)	740-2¼ 714 (800-2¼)

SE-3, 07 DEC 2017 to 04 JAN 2018

SE-3, 07 DEC 2017 to 04 JAN 2018