

WAAS CH 93507 W33A	APP CRS 335°	Rwy Idg TDZE Apt Elev 5127 23 26
--	------------------------	--

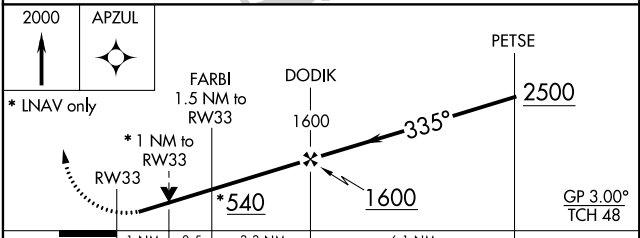
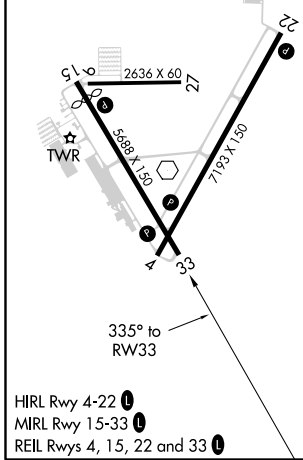
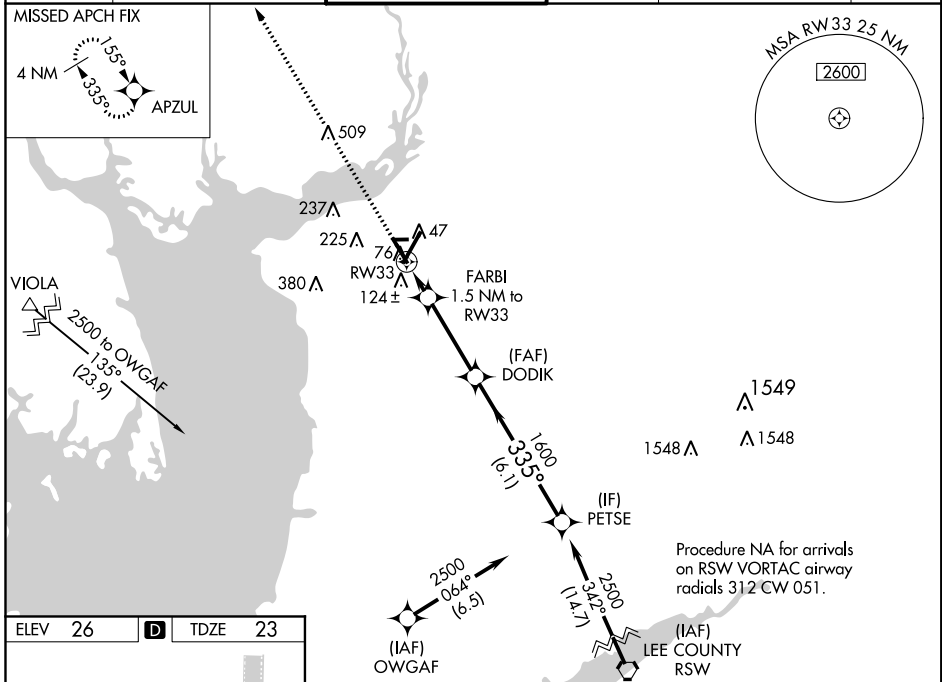
RNAV (GPS) RWY 33

PUNTA GORDA (PGD)

▼ Baro-VNAV and VDP NA when using Page Field altimeter setting. For uncompensated Baro-VNAV systems, LNAV/VNAV NA below 0°C (32°F) or above 54°C (130°F). DME/DME RNP-0.3 NA.
▲ When local altimeter setting not received, use Page Field altimeter setting and increase all DA 50 feet and all MDA 60 feet; increase LPV and LNAV/VNAV all Cats visibility ¼ mile, LNAV Cats C and D visibility ½ mile, and Circling Cat C visibility ¼ mile. Helicopter visibility reduction below ¾ SM NA.

MISSED APPROACH:
Climb to 2000 direct APZUL and hold.

ASOS 135.675	FORT MYERS APP CON * 125.15 306.2	PUNTA GORDA TOWER * 121.0 (CTAF) 0	GND CON 119.55	CLNC DEL 119.55 127.05 when twr closed	UNICOM 122.975
------------------------	---	--	--------------------------	--	--------------------------



CATEGORY	A	B	C	D
LPV DA		273-¾	250 (300-¾)	
LNAV/VNAV DA		305-⅞	282 (300-⅞)	
LNAV MDA		380-1	357 (400-1)	
CIRCLING	440-1	580-1	600-1½	740-2¼
	414 (500-1)	554 (600-1)	574 (600-1½)	714 (800-2¼)

SE-3, 07 DEC 2017 to 04 JAN 2018

SE-3, 07 DEC 2017 to 04 JAN 2018