

WAAS CH 72806 W18A	APP CRS 176°	Rwy Idg TDZE Apt Elev	6500 414 425
---------------------------------	------------------------	-----------------------------	---

RNAV (GPS) RWY 18

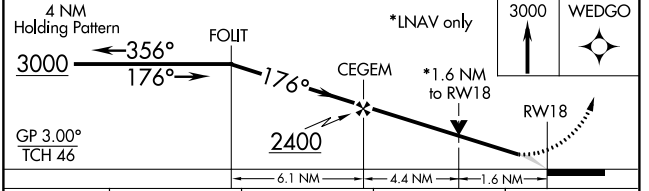
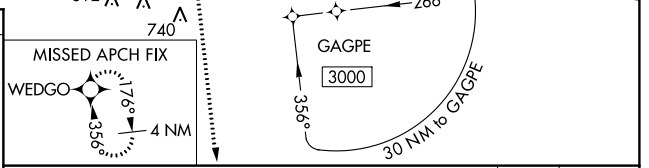
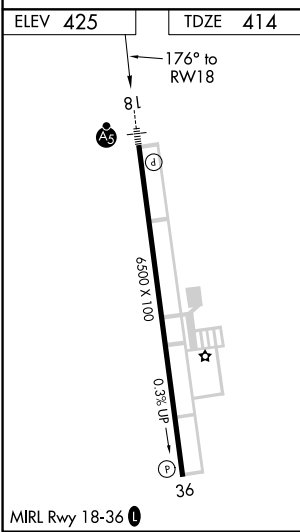
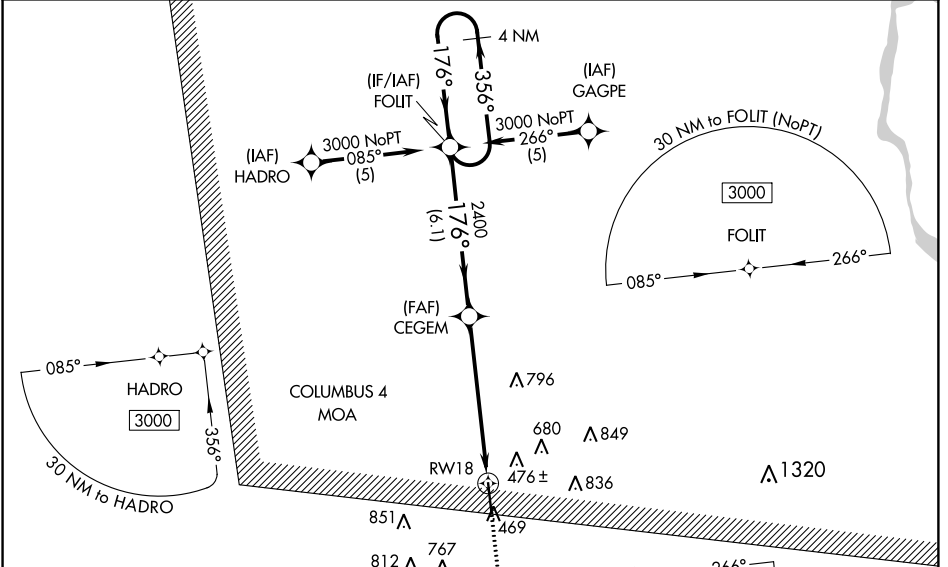
ROSCOE TURNER (CRX)

⚠ Baro-VNAV NA when using Selmer altimeter setting. For uncompensated Baro-VNAV systems, LNAV/VNAV NA below -15°C (5°F) or above 48°C (118°F). DME/DME RNP-0.3 NA. VDP NA when using Selmer altimeter setting. When local altimeter setting not received, use Selmer altimeter setting and increase LPV DA to 682, LNAV/VNAV DA to 812, and all MDAs 80 feet; increase LNAV/VNAV all Cats, LNAV Cat C and D, and circling Cat C visibilities ¼ mile. For inoperative MALSR when using Selmer altimeter setting increase LPV visibilities to 1 mile all Cats.



MISSED APPROACH:
Climb to 3000 direct WEDGO and hold.

AWOS-3 118.675	MEMPHIS CENTER 135.9 273.55	UNICOM 122.8 (CTAF) ①
--------------------------	---------------------------------------	---------------------------------



CATEGORY	A	B	C	D
LPV DA		614-½	200 (200-½)	
LNAV/ DA VNAV		744-¾	330 (400-¾)	
LNAV MDA	940-½	526 (600-½)	940-1 526 (600-1)	940-1¼ 526 (600-1¼)
CIRCLING	940-1	515 (600-1)	940-1½ 515 (600-1½)	980-2 555 (600-2)

SC-4, 07 DEC 2017 to 04 JAN 2018

SC-4, 07 DEC 2017 to 04 JAN 2018