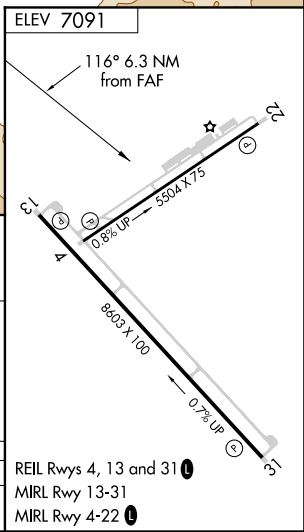
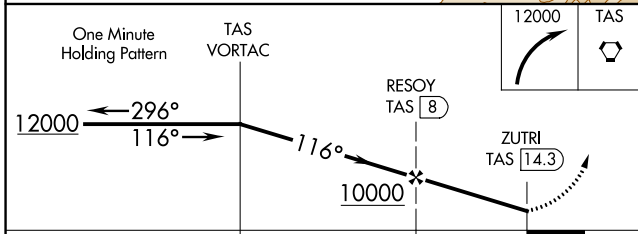
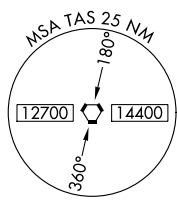
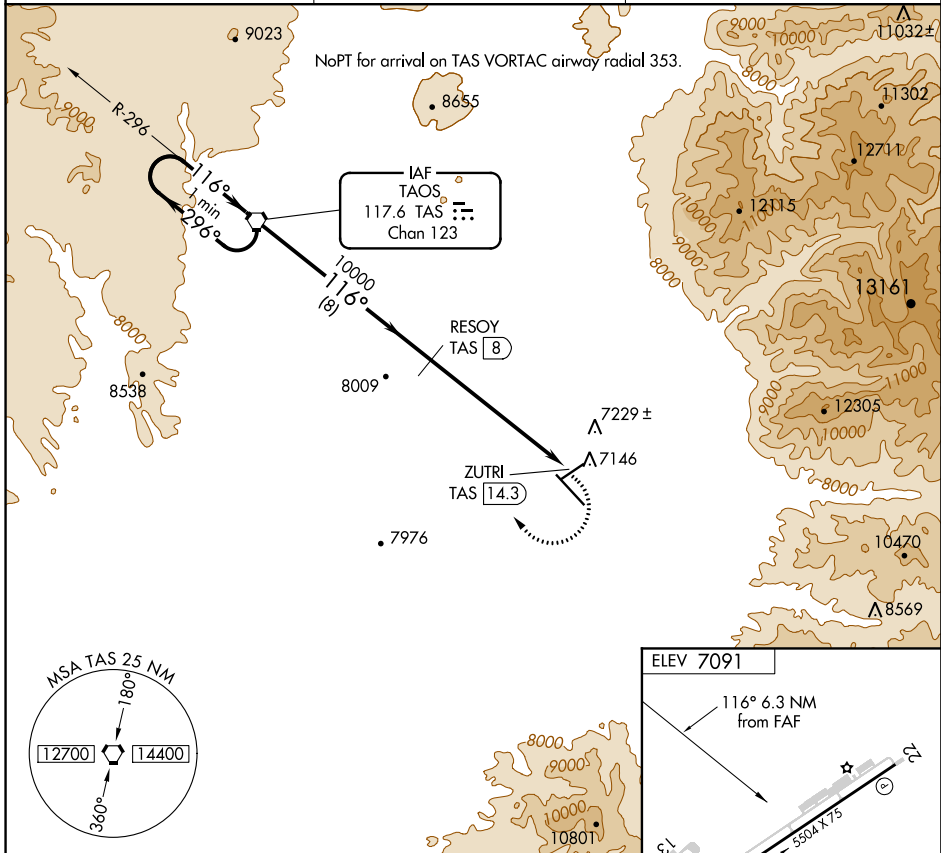


VORTAC TAS <b>117.6</b> Chan <b>123</b>	APP CRS <b>116°</b>	Rwy Idg TDZE Apt Elev	<b>N/A</b> <b>N/A</b> <b>7091</b>
---	------------------------	-----------------------------	---

**VOR/DME-B**  
TAOS RGNL (SKX)

**MISSED APPROACH:** Climbing right turn to 12000 direct TAS VORTAC and hold.

AWOS-3PT <b>132.975</b>	ALBUQUERQUE RADIO <b>122.1R</b>	UNICOM <b>122.8</b> (CTAF) <b>①</b>
----------------------------	------------------------------------	--



CATEGORY	A	B	C	D
CIRCLING	8000-1¼	909 (1000-1¼)	8000-2¾	8000-3
		909 (1000-1¼)	909 (1000-2¾)	909 (1000-3)

REIL Rwys 4, 13 and 31 **①**  
MIRL Rwy 13-31  
MIRL Rwy 4-22 **①**

SW-1, 07 DEC 2017 to 04 JAN 2018

SW-1, 07 DEC 2017 to 04 JAN 2018