

# RNAV (GPS) RWY 4

TAOS RGNL (SKX)

APP CRS <b>045°</b>	Rwy Idg TDZE Apt Elev	<b>5504</b> <b>7068</b> <b>7091</b>
------------------------	-----------------------------	---

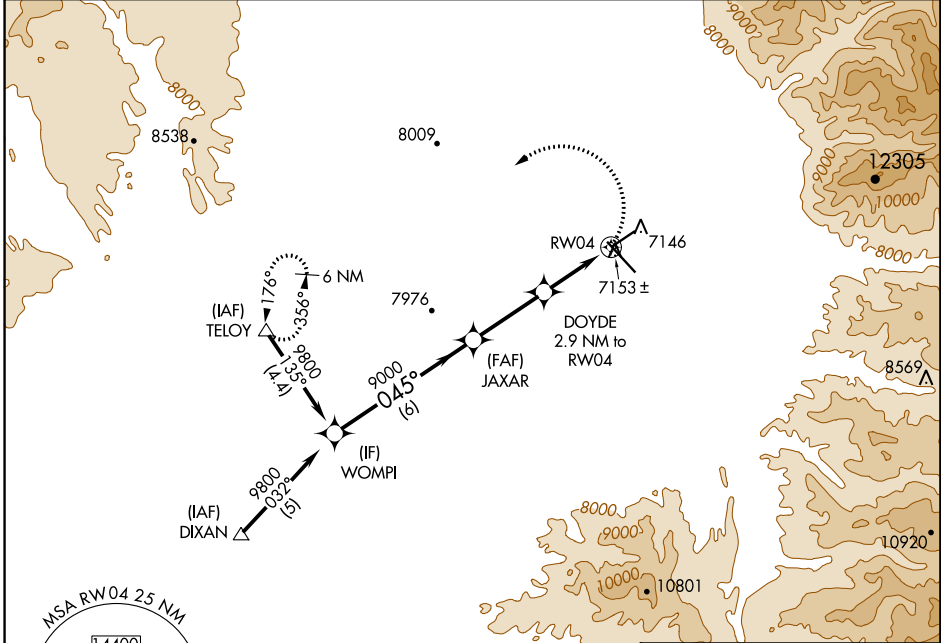
**▼** DME/DME RNP-0.3 NA  
If local altimeter setting not received, procedure NA.

MISSED APPROACH: Climbing left turn to 11000 direct TELOY and hold.

AWOS-3PT  
**132.975**

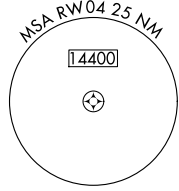
ALBUQUERQUE RADIO  
**122.1R**

UNICOM  
**122.8 (CTAF) 0**

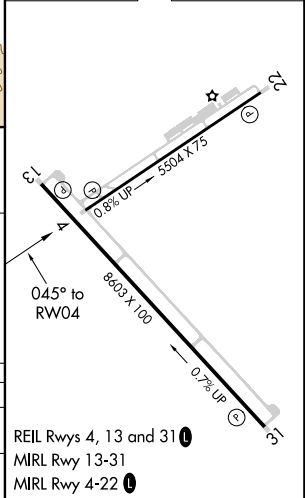
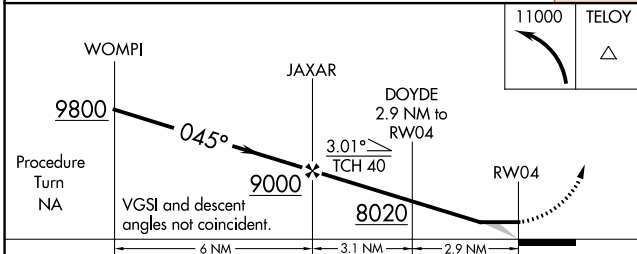


SW-1, 07 DEC 2017 to 04 JAN 2018

SW-1, 07 DEC 2017 to 04 JAN 2018



ELEV 7091	TDZE 7068
-----------	-----------



CATEGORY	A	B	C	D
LNVA MDA	7480-1	412 (400-1)	7480-1¼	412 (400-1¼)
CIRCLING	7540-1 449 (500-1)	7560-1 469 (500-1)	7600-1½ 509 (600-1½)	7660-2 569 (600-2)