

VORTAC LAN 110.8 Chan 45	APP CRS 315°	Rwy Idg TDZE Apt Elev	N/A N/A 818
----------------------------------------------	------------------------	-----------------------------	----------------------------------------

VOR-A
IONIA COUNTY (Y7 ϕ)

▽ Use Lansing altimeter setting; when not received, use Charlotte altimeter setting and increase all MDAs 20 feet, and increase Cat C visibility 1/4 mile.
▲ NA

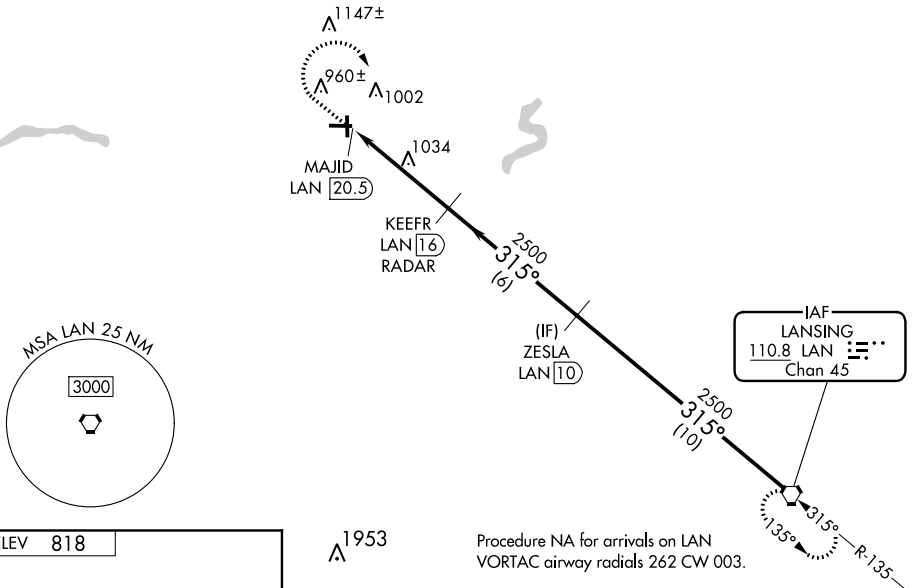
MISSED APPROACH: Climb to 2500 then right turn direct LAN VORTAC and hold.

AWOS-3
118.9

LANSING APP CON
118.65 226.4

UNICOM
122.8 (CTAF) ϕ

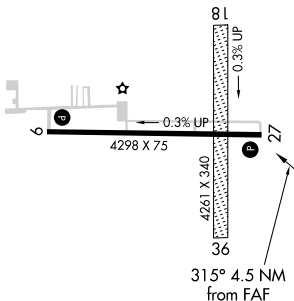
CAUTION: Brightly lighted shopping center 3000' north of airport.



EC-1, 07 DEC 2017 to 04 JAN 2018

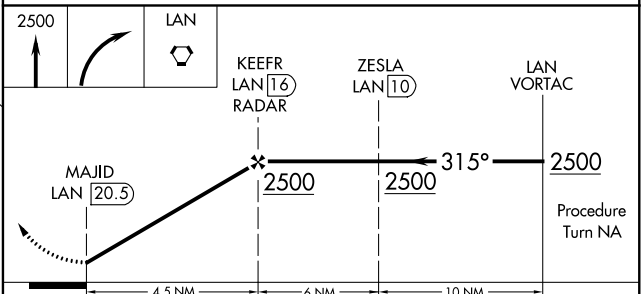
EC-1, 07 DEC 2017 to 04 JAN 2018

ELEV **818**



REIL Rwy 27 ϕ
MIRL Rwy 9-27 ϕ

DME or RADAR REQUIRED



FAF to MAP 4.5 NM					
Knots	60	90	120	150	180
Min:Sec	4:30	3:00	2:15	1:48	1:30

CATEGORY	A	B	C	D
CIRCLING	1400-1 582 (600-1)	1400-1 1/4 582 (600-1 1/4)	1400-1 1/2 582 (600-1 1/2)	NA