

APP CRS <b>276°</b>	Rwy Idg <b>4298</b>
	TDZE <b>812</b>
	Apt Elev <b>818</b>

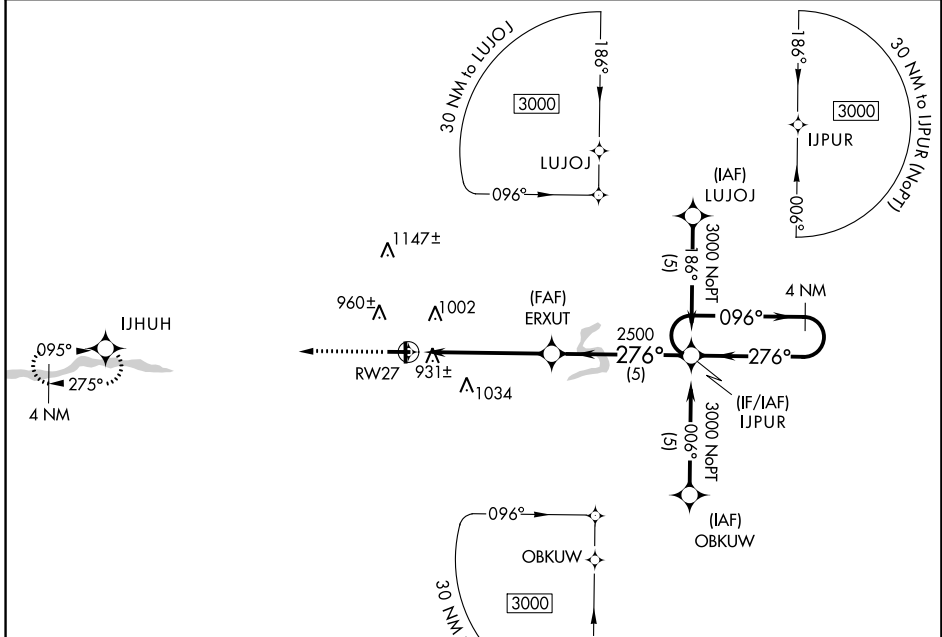
# RNAV (GPS) RWY 27

IONIA COUNTY (Y7~~0~~)

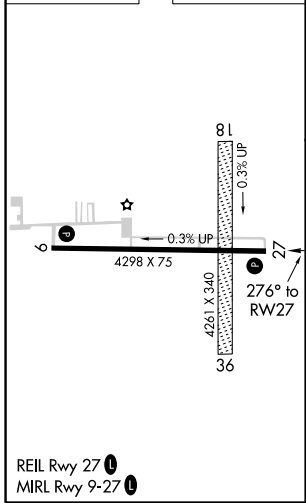
▼ Use Lansing altimeter setting.  
▲ NA DME/DME RNP-0.3 NA.  
 GPs or RNP-0.3 required.

MISSED APPROACH: Climb to 3000 direct IJHUH WP and hold.

AWOS-3 <b>118.9</b>	LANSING APP CON <b>118.65 226.4</b>	UNICOM <b>122.8 (CTAF)</b>
------------------------	--	-------------------------------



ELEV 818	TDZE 812
----------	----------



	▲ 1953			
	3000	IJHUH	IJPUR	4 NM Holding Pattern
	RW27	ERXUT	IJPUR	3000
		276°	096°	
		2500	276°	
	5.1 NM	5 NM		
CATEGORY	A	B	C	D
LNAV MDA	1260 - 1	448 (500-1)	1260 - 1½ 448 (500-1½)	NA
CIRCLING	1380 - 1	567 (600-1)	1380 - 1½ 567 (600-1½)	NA

EC-1, 07 DEC 2017 to 04 JAN 2018

EC-1, 07 DEC 2017 to 04 JAN 2018