

WAAS CH 82429 W35A	APP CRS 360°	Rwy Idg TDZE Apt Elev	4002 1279 1279
---------------------------------	------------------------	-----------------------------	---

RNAV (GPS) RWY 35

CLOQUET CARLTON COUNTY (COQ)

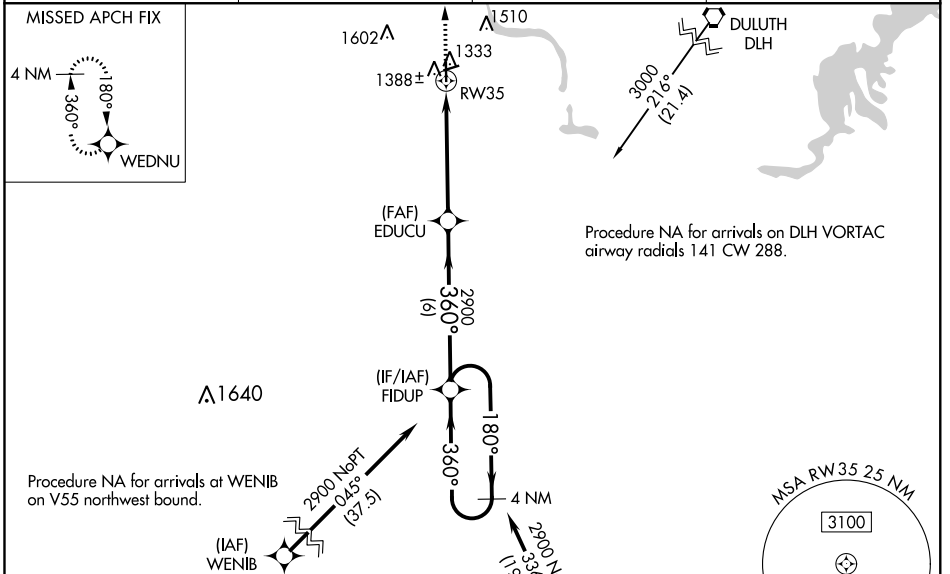
⚠ Baro-VNAV NA when using Duluth Intl altimeter setting. For uncompensated Baro-VNAV systems, LNAV/VNAV NA below -17°C (2°F) or above 54°C (130°F). DME/DME RNP-0.3 NA. VDP NA when using Duluth Intl altimeter setting. When local altimeter setting not received, use Duluth Intl altimeter setting and increase all DA/MDA 60 feet; increase LNAV/VNAV all Cats visibility 1/8, LNAV and Circling Cat C visibility 1/4 mile. Inop table does not apply. Night landing: Rwy 7, 25 NA.

ODALS

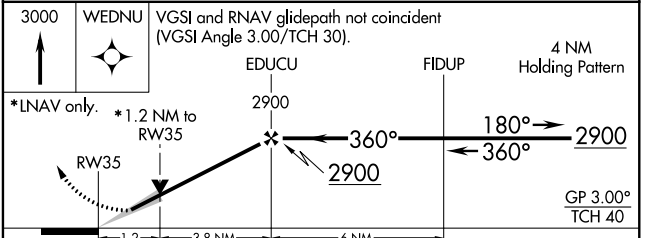
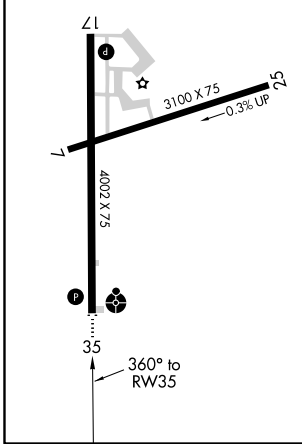


MISSED APPROACH:
Climb to 3000 direct
WEDNU and hold.

AWOS-3 118.525	DULUTH APP CON 125.45 233.7	CLNC DEL 122.15	UNICOM 122.8 (CTAF)
--------------------------	---------------------------------------	---------------------------	-------------------------------



ELEV 1279	TDZE 1279
MIRL Rwy 7-25 and 17-35	
REIL Rwy 17	



CATEGORY	A	B	C	D
LPV DA	1529-1	250 (300-1)		NA
LNAV/VNAV DA	1545-1	266 (300-1)		NA
LNAV MDA	1680-1	401 (500-1)	1680-1 1/8 401 (500-1 1/8)	NA
CIRCLING	1700-1 421 (500-1)	1780-1 501 (600-1)	1860-1 1/2 581 (600-1 1/2)	NA

NC-1, 07 DEC 2017 to 04 JAN 2018

NC-1, 07 DEC 2017 to 04 JAN 2018