

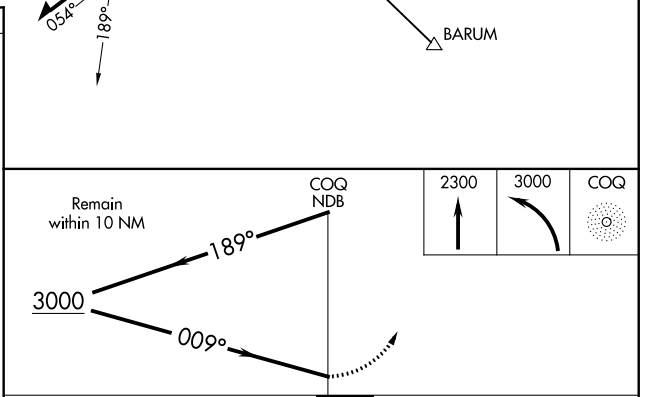
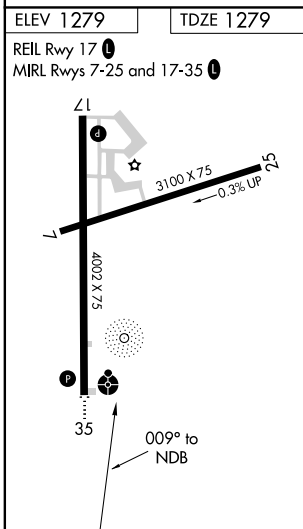
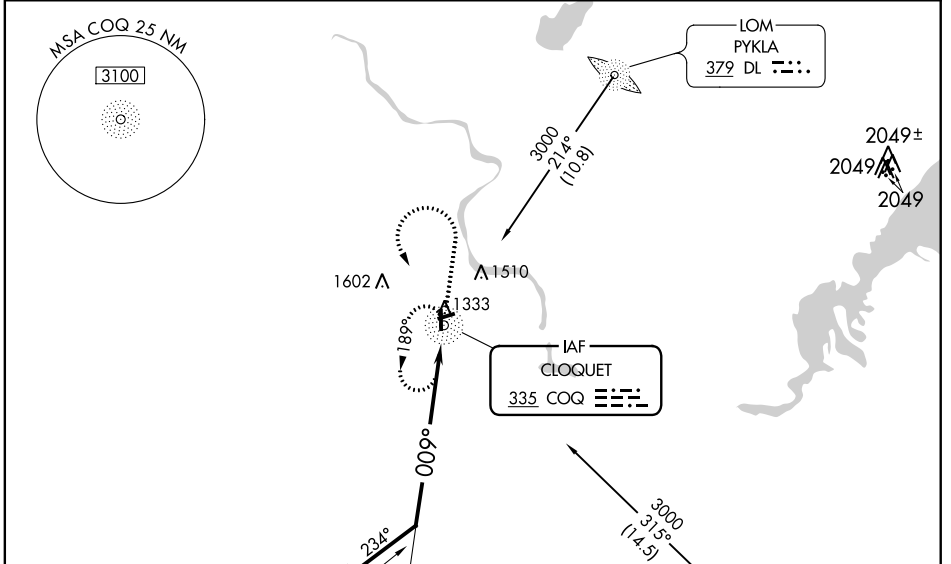
NDB COQ	APP CRS	Rwy Idg	4002
335	009°	TDZE	1279
		Apt Elev	1279

NDB RWY 35
CLOQUET CARLTON COUNTY (COQ)

NA When local altimeter setting not received, use Duluth Intl altimeter setting and increase all MDA 60 feet; increase S-35 and Circling Cat C visibility 1/8 mile. Inoperative table does not apply to S-35 Cat A/B. For inoperative ODALS, increase S-35 Cat C visibility to 1 3/4 mile. For inoperative ODALS when using Duluth Intl altimeter setting increase S-35 Cat C visibility to 1 1/8 mile. Night Landing: Rwy 7, 25 NA.

ODALS MISSED APPROACH: Climb to 2300 then climbing left turn to 3000 direct COQ NDB and hold, continue climb-in-hold to 3000.

AWOS-3 118.525	DULUTH APP CON 125.45 233.7	CLNC DEL 122.15	UNICOM 122.8 (CTAF)
--------------------------	---------------------------------------	---------------------------	-------------------------------



CATEGORY	A	B	C	D
S-35	1860-1	581 (600-1)	1860-1 1/8 581 (600-1 1/8)	NA
CIRCLING	1860-1	581 (600-1)	1860-1 1/4 581 (600-1 1/4)	NA

NC-1, 07 DEC 2017 to 04 JAN 2018

NC-1, 07 DEC 2017 to 04 JAN 2018