

APP CRS	Rwy Idg	<b>5500</b>
<b>182°</b>	TDZE	<b>922</b>
	Apt Elev	<b>922</b>

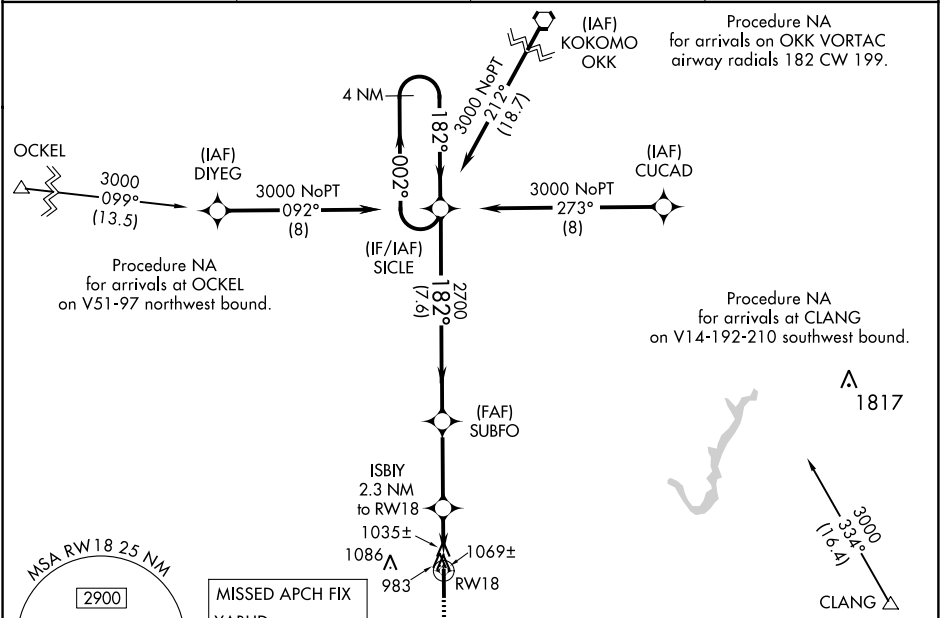
# RNAV (GPS) RWY 18

INDIANAPOLIS EXECUTIVE (TYQ)

**▼** Baro-VNAV NA when using Indianapolis Intl altimeter setting. For uncompensated Baro-VNAV systems, LNAV/VNAV NA below -16°C (4°F) or above 33°C (91°F). DME/DME RNP-0.3 NA.  
**▲** Rwy 18 helicopter visibility reduction below 3/4 SM NA. When local altimeter setting not received, use Indianapolis Intl altimeter setting: increase DA 62 feet and visibility all Cats 1/4 mile; increase all MDA 80 feet and LNAV visibility Cat C/D 1/8 mile.

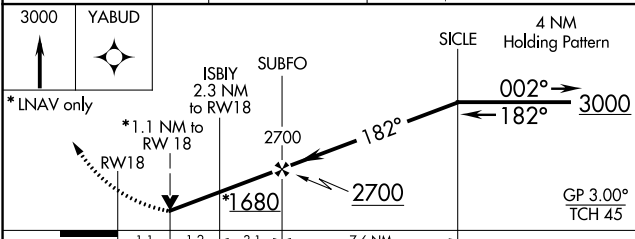
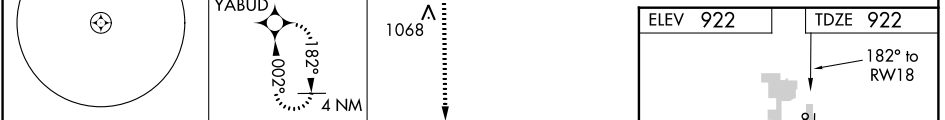
**MISSED APPROACH:**  
 Climb to 3000 direct YABUD and hold.

AWOS-3PT <b>120.725</b>	INDIANAPOLIS APP CON <b>124.65 127.15 317.8</b>	GCO <b>121.725</b>	UNICOM <b>123.05 (CTAF)</b>
----------------------------	--	-----------------------	--------------------------------



EC-2, 07 DEC 2017 to 04 JAN 2018

EC-2, 07 DEC 2017 to 04 JAN 2018



ELEV 922	TDZE 922
----------	----------

HIRL Rwy 18-36  
 REIL Rwy 18 and 36

CATEGORY	A	B	C	D
LNAV/VNAV DA	1216-1 294 (300-1)			
LNAV MDA	1320-1 398 (400-1)	1320-1 1/8 398 (400-1 1/8)		
CIRCLING	1360-1 438 (500-1)	1380-1 458 (500-1)	1400-1 1/2 478 (500-1 1/2)	1480-2 558 (600-2)