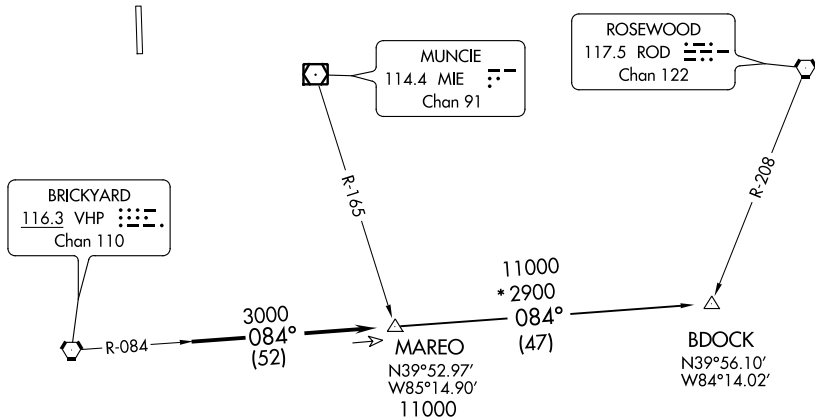


AWOS-3PT  
120.725  
INDIANAPOLIS DEP CON  
124.65 127.15 317.8  
CTAF  
123.05

TAKEOFF MINIMUMS

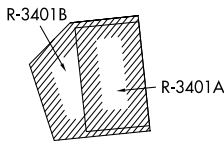
Rwys 18, 36: Standard.

**TOP ALTITUDE:  
ASSIGNED BY ATC**



TAKEOFF OBSTACLE NOTES:

Rwy 18: Tree 1870' from DER, 524' left of centerline, 52' AGL/971' MSL.  
Rwy 36: Poles 1115' from DER, 321' left of centerline, 33' AGL/958' MSL.  
Multiple trees beginning 1257' from DER, 320' right of centerline, up to 80' AGL/999' MSL. Multiple trees beginning 2266' from DER, left and right of centerline, up to 126' AGL/1035' MSL.



- NOTE: RADAR required.
- NOTE: Select appropriate localizer/DME frequency/channel prior to departure.
- NOTE: Turbojets accelerate to 250K until reaching 10000, if unable advise ATC.
- NOTE: Assigned to aircraft with a requested altitude of 11000 or above.

NOTE: Chart not to scale.



DEPARTURE ROUTE DESCRIPTION

DEPARTING ALL OTHER AUTHORIZED RUNWAYS/AIRPORTS: Climb on assigned heading to assigned altitude. Thence....

....expect RADAR vectors to join VHP R-084 to MAREO INT then via transition or assigned route. Expect clearance to requested altitude ten minutes after departure.

BDOCK TRANSITION (MAREO4.BDOCK): From over MAREO INT via VHP R-084 to BDOCK INT.