

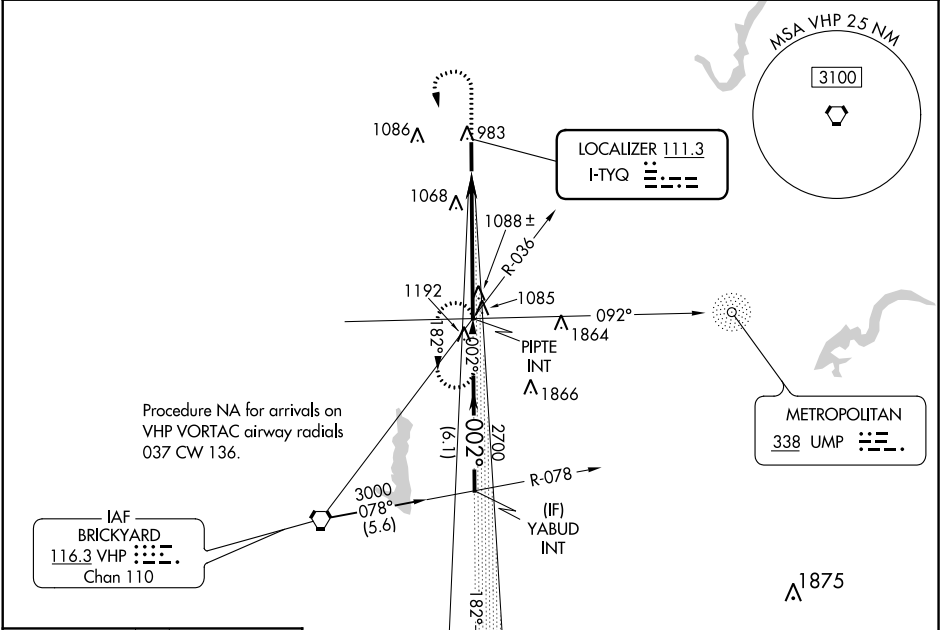
LOC I-TYQ 111.3	APP CRS 002°	Rwy Idg 5500
		TDZE 922
		Apt Elev 922

ILS or LOC RWY 36
INDIANAPOLIS EXECUTIVE (TYQ)

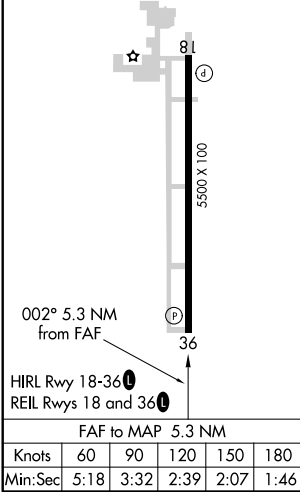
NA ADF Required. Rwy 36 helicopter visibility reduction below 3/4 SM NA. When local altimeter setting not received, use Indianapolis Intl altimeter setting and increase all DA 61 feet and all S-ILS visibilities 1/4 mile, increase all MDA 80 feet, and S-LOC Cat C/D and Circling Cat C visibility 1/4 mile.

MISSED APPROACH: Climb to 2200 then climbing left turn to 3000 via heading 160° to I-TYQ LOC south course to PIPE INT and hold.

AWOS-3PT 120.725	INDIANAPOLIS APP CON 124.65 127.15 317.8	GCO 121.725	UNICOM 123.05 (CTAF)
----------------------------	--	-----------------------	--------------------------------



ELEV 922	TDZE 922
----------	----------



2200	3000	I-TYQ S crs	PIPE INT	VGSI and ILS glidepath not coincident (VGSI Angle 3.00/TCH 53).	Procedure Turn NA
↑	hdg 160°				
		PIPE INT	YABUD INT	3000	GS 3.00° TCH 53
5.3 NM		6.1 NM			
CATEGORY	A	B	C	D	
S-ILS 36	1122-3/4			200 (200-3/4)	
S-LOC 36	1400-1		478 (500-1)		1400-1 1/2 478 (500-1 1/2)
<input checked="" type="checkbox"/> CIRCLING	1400-1		478 (500-1)		1400-1 1/2 558 (600-2)

EC-2: 07 DEC 2017 to 04 JAN 2018

EC-2: 07 DEC 2017 to 04 JAN 2018