


WAAS CH 45710 W28A	APP CRS 281°	Rwy Idg TDZE Apt Elev	3401 423 427
--	------------------------	-----------------------------	---

RNAV (GPS) RWY 28R

MONTGOMERY-GIBBS EXECUTIVE (MYF)

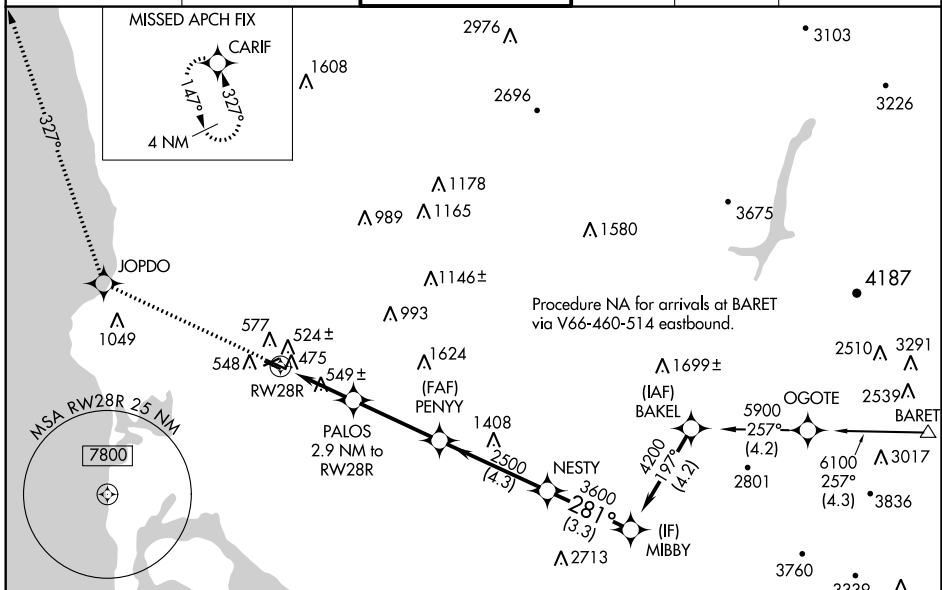
⚠ For uncompensated Baro-VNAV systems, LNAV/VNAV NA below -15°C (5°F) or above 54°C (130°F). DME/DME RNP-0.3 NA. VDP NA with San Diego Intl altimeter setting. Baro-VNAV NA when using San Diego Intl altimeter setting. When local altimeter setting not received, use San Diego Intl altimeter setting and increase all DA 71 feet and all MDA 80 feet and increase LNAV/VNAV all Cats visibility ¼ mile. For inoperative MALSRS when using San Diego Intl altimeter setting increase LPV all Cats visibility to 1 mile.

MALSRS

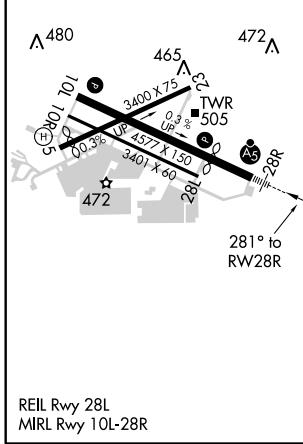


MISSED APPROACH:
Climb to 3000 direct JOPDO and on track 327° to CARIF and hold.

ATIS 126.9	SOCAL APP CON 124.35 279.625	MONTGOMERY TOWER * 119.2 (CTAF) 0 269.4	GND CON 118.22	CLNC DEL 123.725	SAN DIEGO RADIO 122.4
-----------------------------	---	--	---------------------------------	-----------------------------------	--



ELEV 427	TDZE 423
-----------------	-----------------



3000	JOPDO	tr 327°	CARIF				
*LNAV only		*1.2 NM to RWY 28R		PALOS 2.9 NM to RWY 28R	PENNY 2500	NESTY 3600	MIBBY 4200
RWY 28R		1380*		2500	281°		GP 3.00° TCH 41
-1.2 NM		-1.7 NM		-3.4 NM		-4.3 NM	

CATEGORY	A	B	C	D
LPV DA	623-½	200 (200-½)		NA
LNAV/VNAV DA	750-¾	327 (400-¾)		NA
LNAV MDA	840-½	417 (500-½)		NA
CIRCLING	880-1	453 (500-1)		NA

SW-3, 07 DEC 2017 to 04 JAN 2018

SW-3, 07 DEC 2017 to 04 JAN 2018