

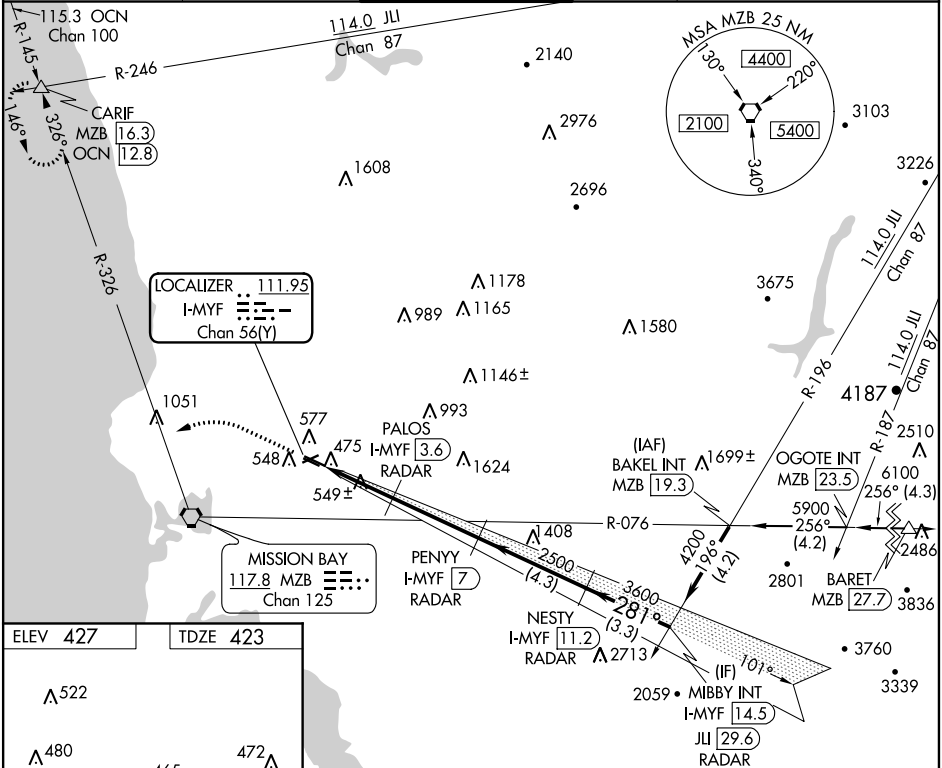
LOC/DME I-MYF 111.95 Chan 56(Y)	APP CRS 281°	Rwy Idg 3401 TDZE 423 Apt Elev 427
--	------------------------	---

ILS or LOC RWY 28R
MONTGOMERY-GIBBS EXECUTIVE (MYF)

▼ DME or RADAR required. VDP NA with San Diego Intl altimeter setting.
▲ When local altimeter setting not received, use San Diego Intl altimeter setting and increase all DA 71 feet and all MDA 80 feet.
 For inoperative MALSR when using San Diego Intl altimeter setting, increase S-ILS 28R all Cats visibility to 1 mile.

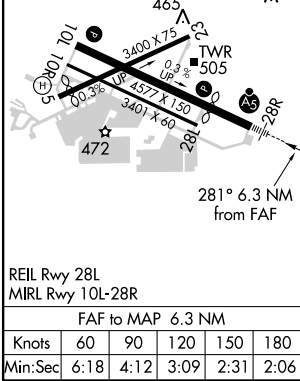
MALSR  MISSED APPROACH: Climb to 1100 then climbing left turn to 3000 via heading 270° and MZB VORTAC R-326 to CARIF INT/MZB 16.3 DME and hold.

ATIS 126.9	SOCAL APP CON 124.35 279.625	MONTGOMERY TOWER* 119.2 (CTAF) 0 269.4	GND CON 118.22	CLNC DEL 123.725	SAN DIEGO RADIO 122.4
----------------------	--	--	--------------------------	----------------------------	---------------------------------



SW-3, 07 DEC 2017 to 04 JAN 2018

SW-3, 07 DEC 2017 to 04 JAN 2018



ELEV 427	TDZE 423				
REIL Rwy 28L MIRL Rwy 10L-28R FAF to MAP 6.3 NM		1100 ↑ hdg 270°		MZB R-326	CARIF △
*LOC only		I-MYF 0.7 *I-MYF 1.7	PALOS I-MYF 3.6 RADAR	PENNY I-MYF 7 RADAR	NESTY I-MYF 11.2 RADAR
		2500 1380*	2500 2500	281° 3600	MIBBY INT I-MYF 14.5 RADAR
		1.1 NM	1.9 NM	3.4 NM	4.3 NM
		3.3 NM			
		GS 3.00° TCH 41			
		Procedure Turn NA			
CATEGORY	A	B	C	D	
S-ILS 28R	623-½	200 (200-½)			NA
S-LOC 28R	800-½	377 (400-½)			NA
CIRCLING	880-1	453 (500-1)			NA