

WAAS CH 72608 W12A	APP CRS 116°	Rwy Idg 8501 TDZE 62 Apt Elev 73
--	------------------------	---

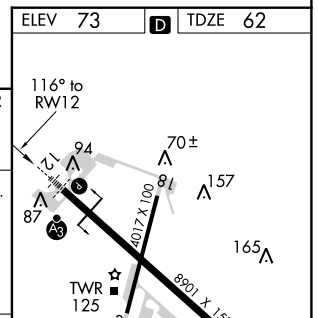
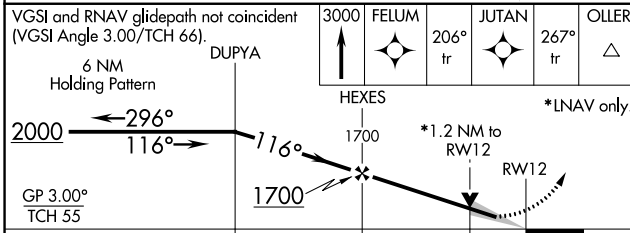
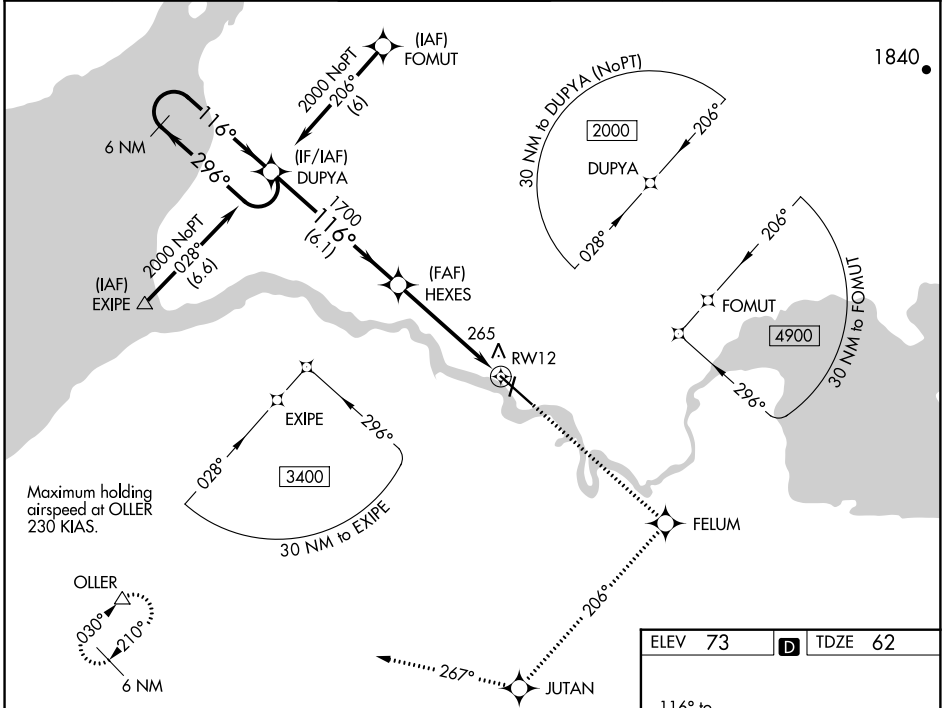
RNAV (GPS) RWY 12

KING SALMON (AKN)(PAKN)

⚠ For uncompensated Baro-VNAV systems, LNAV/VNAV NA below -25°C (-13°F) or above 48°C (118°F). DME/DME RNP -0.3 NA. For inoperative ALSF increase LPV Cat E visibility to ¾ mile, LNAV/VNAV Cat E visibility to 1½ mile, LNAV Cat E visibility to 1½ mile.

SSALR MISSED APPROACH: Climb to 3000 direct FELUM and via 206° track to JUTAN and via 267° track to OLLER and hold.

ATIS 128.8	ANCHORAGE CENTER 124.8 354.0	KING SALMON TOWER* 118.3 279.5	GND CON 121.9	UNICOM 122.95	CTAF 121.9 352.05
----------------------	--	--	-------------------------	-------------------------	-----------------------------



CATEGORY	A	B	C	D	E
LPV DA	317-½ 255 (300-½)				
LNAV/VNAV DA	524-1 462 (500-1)			524-1½ 462 (500-1½)	
LNAV MDA	520-½ 458 (500-½)	520-¾ 458 (500-¾)		520-1 458 (500-1)	
CIRCLING	580-1 507 (600-1)	580-½ 507 (600-½)	640-2 567 (600-2)	720-2½ 647 (700-2½)	

REIL Rwy 12	⓪
MIRL Rwy 18-36	⓪
HIRL Rwy 12-30	⓪

AK, 07 DEC 2017 to 01 FEB 2018

AK, 07 DEC 2017 to 01 FEB 2018