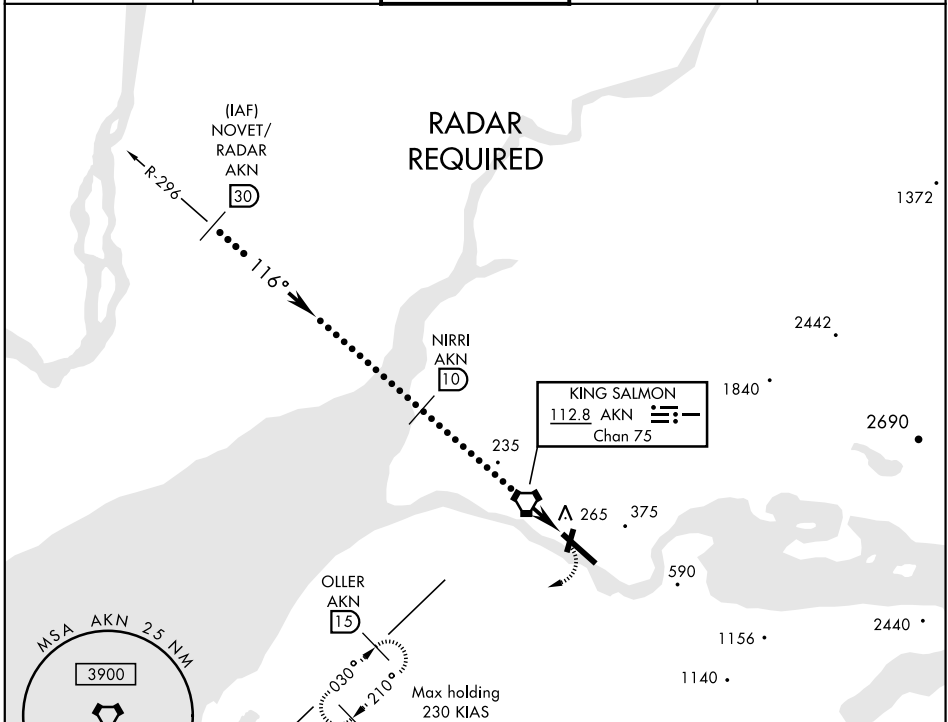


KING SALMON, ALASKA

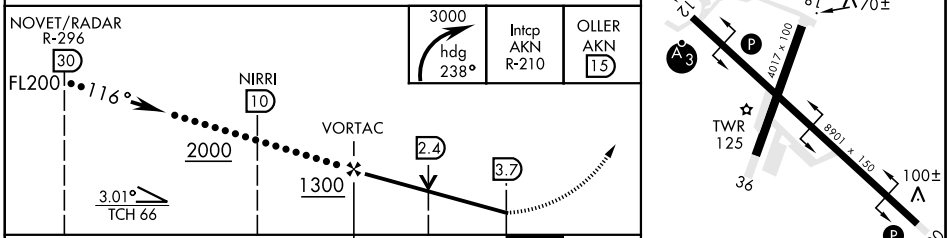
HI-VOR/DME or TACAN RWY 12

VORTAC AKN 112.8 Chan 75	APCH CRS 116°	Rwy Idg TDZE Arprt Elev 8901 62 73	JAL-1237 [USAF]	KING SALMON (PAKN)
<p>▼ * When ALS inop, increase CAT E vis to 1½ miles.</p> <p>▲</p>			SSALR A3	MISSED APPROACH: Climbing right turn to 3000 via heading 238° and AKN VORTAC R-210 to OLLER/15 DME and hold.

ATIS★ 128.8	ANCHORAGE CENTER 124.8 354.0	KING SALMON TOWER★ 118.3 279.5	GND CON 121.9	CTAF 121.9 352.05
-----------------------	--	--	-------------------------	-----------------------------



EMERG SAFE ALT 100 NM 9900	ELEV 73	TDZE 62
----------------------------	---------	---------



CATEGORY	C	D	E
S-12*	520-¾ 458 (500-¾)	520-1	458 (500-1)
CIRCLING	580-1½ 507 (600-1½)	640-2 567 (600-2)	720-2¼ 647 (700-2¼)

KING SALMON, ALASKA 58°41'N-156°39'W KING SALMON (PAKN)

HI-VOR/DME or TACAN RWY 12

AK, 07 DEC 2017 to 01 FEB 2018

AK, 07 DEC 2017 to 01 FEB 2018

