


WAAS CH <b>61099</b> <b>W36A</b>	APP CRS <b>356°</b>	Rwy Idg TDZE Apt Elev	<b>5602</b> <b>1307</b> <b>1324</b>
--	------------------------	-----------------------------	---


# RNAV (GPS) RWY 36

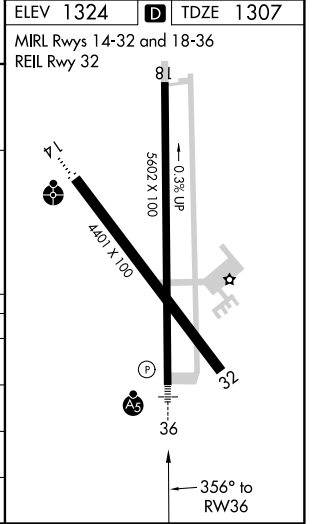
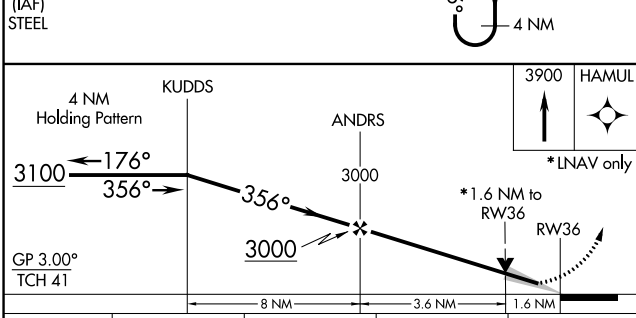
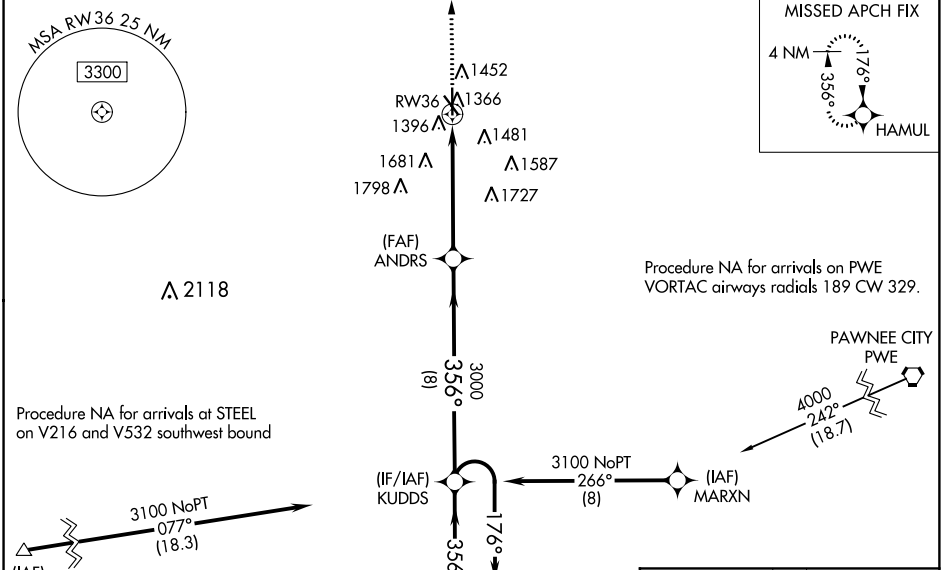
BEATRICE MUNI (BIE)

**⚠** Inoperative table does not apply to LPV all Cats. Baro-VNAV NA when using Lincoln altimeter setting. For uncompensated Baro-VNAV systems, LNAV/VNAV NA below -22°C (-7°F) or above 54°C (130°F). For inoperative MALSRL, increase LNAV/VNAV all Cats visibility to 7/8 mile and LNAV Cat A/B visibility to 1. DME/DME RNP-0.3 NA. VDP NA with Lincoln altimeter setting. When local altimeter setting not received, use Lincoln altimeter setting and increase all DA 91 feet and all MDA 100 feet. Increase LNAV Cat C/D visibility 1/8 mile and Circling Cat C visibility 1/4 mile and Cat D 1/2 mile.

MALSRL 

MISSED APPROACH: Climb to 3900 direct HAMUL and hold.

AWOS-3 <b>125.325</b>	MINNEAPOLIS CENTER <b>126.4 317.7</b>	COLUMBUS RADIO <b>122.5</b>	UNICOM <b>122.8</b> (CTAF) 
--------------------------	--	--------------------------------	---



CATEGORY	A	B	C	D
LPV DA		1507-3/4	200 (200-3/4)	
LNAV/VNAV DA		1559-3/4	252 (300-3/4)	
LNAV MDA	1840-3/4	533 (600-3/4)	1840-1	533 (600-1)
CIRCLING	1840-1	516 (600-1)	1840-1 1/2 516 (600-1 1/2)	2060-2 1/4 736 (800-2 1/4)

NC-2, 07 DEC 2017 to 04 JAN 2018

NC-2, 07 DEC 2017 to 04 JAN 2018