

VOR/DME PVW 112.9 Chan 76	APP CRS 024°	Rwy Idg 5997 TDZE 3374 Apt Elev 3374
---	------------------------	---

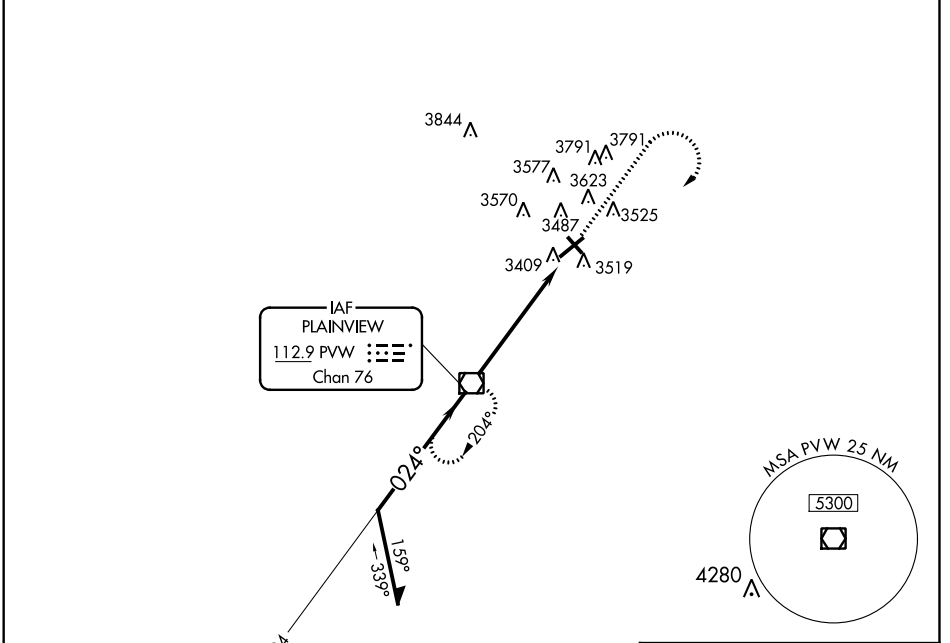
VOR RWY 4

HALE COUNTY (PVW)

NA When local altimeter setting not received, use Lubbock altimeter setting and increase all MDA 100 feet, increase S-4 visibility Cat C to 1½, Cat D and Circling Cat C to 1¼. Helicopter visibility reduction below ¾ mile NA.

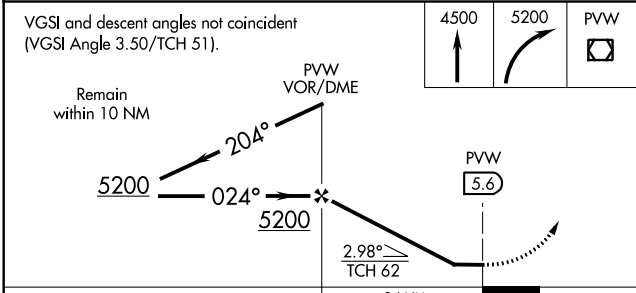
MISSED APPROACH: Climb to 4500, then climbing right turn to 5200 direct PVW VOR/DME and hold.

ASOS 119.675	LUBBOCK APP CON 119.2 351.8	CINC DEL 121.7	UNICOM 123.0 (CTAF)
------------------------	---------------------------------------	--------------------------	-------------------------------

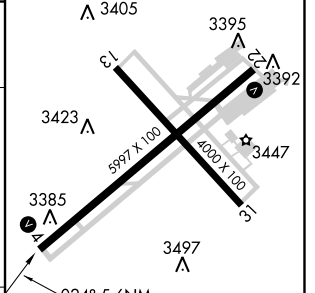


VGSJ and descent angles not coincident (VGSJ Angle 3.50/TCH 51).

Remain within 10 NM



ELEV 3374	TDZE 3374
LIRL Rwy 13-31 and 4-22	REIL Rwy 4 and 22



CATEGORY	A	B	C	D
S-4	3840-1	466 (500-1)	3840-1⅓	466 (500-1⅓)
CIRCLING	3920-1 546 (600-1)	3940-1 566 (600-1)	3940-1½ 566 (600-1½)	3940-2 566 (600-2)

FAF to MAP 5.6 NM					
Knots	60	90	120	150	180
Min:Sec	5:36	3:44	2:48	2:14	1:52

SC-2. 07 DEC 2017 to 04 JAN 2018

SC-2. 07 DEC 2017 to 04 JAN 2018