

WAAS CH 73003 W08A	APP CRS 083°	Rwy Idg 5646 TDZE 545 Apt Elev 545
--	------------------------	---

RNAV (GPS) RWY 8

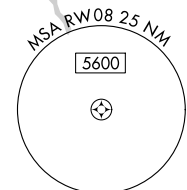
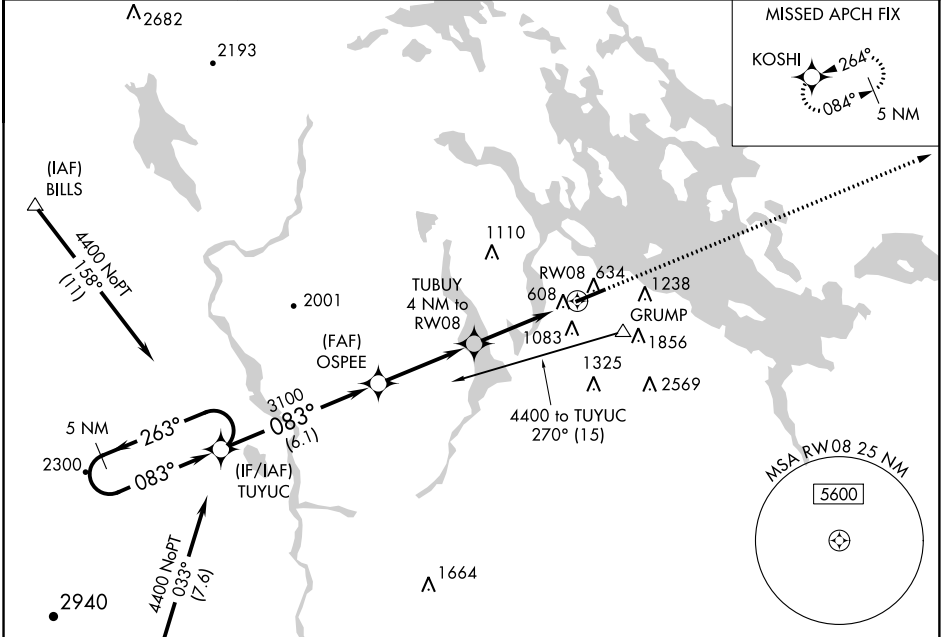
LACONIA MUNI (LCI)

⚠ For inoperative MALSR, increase LPV all Cats visibility to 1½ miles.
⚠ If local altimeter setting not received, use Concord altimeter setting and increase all DAs/MDAs 80 feet. DME/DME RNP-0.3 NA. VDP NA when using Concord altimeter setting. Night landing: Rwy 26 NA.

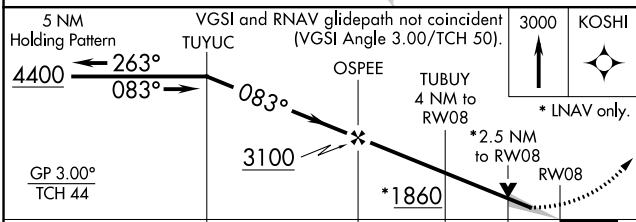
MALSR MISSED APPROACH: Climb to 3000 direct KOSHI and hold.

❄ -25C/-13F

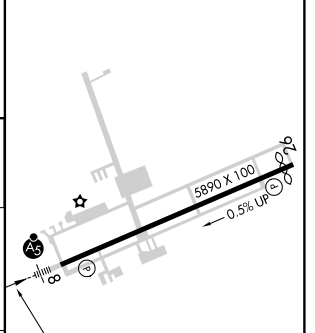
AWOS-3PT 133.525	BOSTON APP CON 134.75 254.25	CLNC DEL 119.85	UNICOM 123.0 (CTAF)
----------------------------	--	---------------------------	-------------------------------



(IAF) BILLS 4400 NoPT 139° (1.1)	(FAF) OSPEE 3100 083° (6.1)	(IF/IAF) TUYUC 2300 083°	(IAF) KERSY 4400 NoPT 033° (7.6)
---	--------------------------------------	--------------------------------	---



ELEV 545	D	TDZE 545
----------	----------	----------



CATEGORY	A	B	C	D
LPV DA	978-1 433 (500-1)			
RNAV MDA	1380-½ 835 (900-½)	1380-¾ 835 (900-¾)	1380-2 835 (900-2)	1380-2¼ 835 (900-2¼)
CIRCLING	1420-1 875 (900-1)	1600-1½ 1055 (1100-1½)	1600-3 1055 (1100-3)	2160-3 1615 (1700-3)

NE-1, 07 DEC 2017 to 04 JAN 2018

NE-1, 07 DEC 2017 to 04 JAN 2018