

# NDB RWY 8

LACONIA MUNI (LCI)

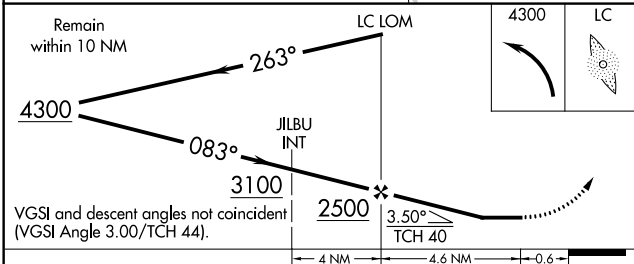
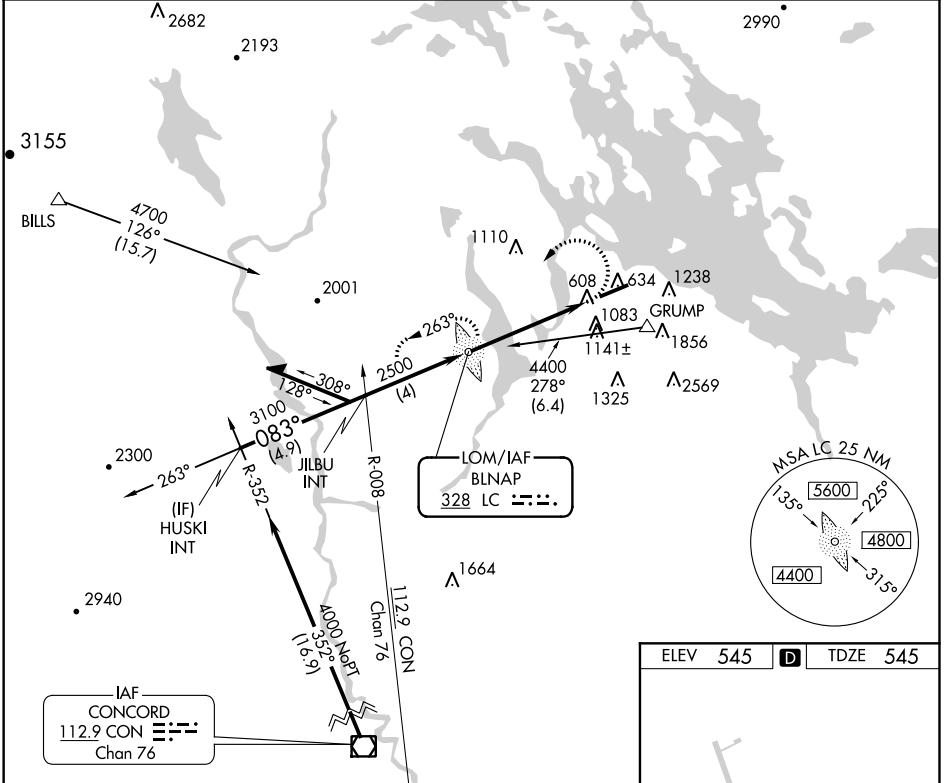
LOM LC <b>328</b>	APP CRS <b>083°</b>	Rwy Idg <b>5646</b>
		TDZE <b>545</b>
		Apt Elev <b>545</b>

**⚠** If local altimeter setting not received, use Concord altimeter setting and increase all MDAs 80 feet. For inoperative MALS/R, increase S-8 Cats A/B visibility to 1 1/4. Night **⚠** -25°C/-13°F landing: Rwy 26 NA.

MALS/R

**MISSED APPROACH:** Climbing left turn to 4300 direct LC LOM and hold, continue climb-in-hold to 4300.

AWOS-3PT <b>133.525</b>	BOSTON APP CON <b>134.75 254.25</b>	CLNC DEL <b>119.85</b>	UNICOM <b>123.0 (CTAF)</b>
----------------------------	--	---------------------------	-------------------------------



ELEV 545	<b>D</b>	TDZE 545
----------	----------	----------

083° 4.6 NM from FAF

HIRL Rwy 8-26 **L**

REIL Rwy 26 **L**

FAF to MAP 4.6 NM

Knots	60	90	120	150	180
Min:Sec	4:34	3:03	2:17	1:50	1:31

CATEGORY	A	B	C	D
S-8	1460-3/4 915 (1000-3/4)		1460-2 1/4 915 (1000-2 1/4)	1460-2 3/4 915 (1000-2 3/4)
CIRCLING	1460-1 1/4 915 (1000-1 1/4)	1600-1 1/2 1055 (1100-1 1/2)	1600-3 1055 (1100-3)	2160-3 1615 (1700-3)

NE-1, 07 DEC 2017 to 04 JAN 2018

NE-1, 07 DEC 2017 to 04 JAN 2018