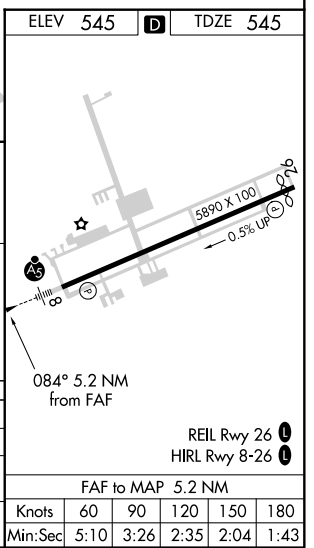
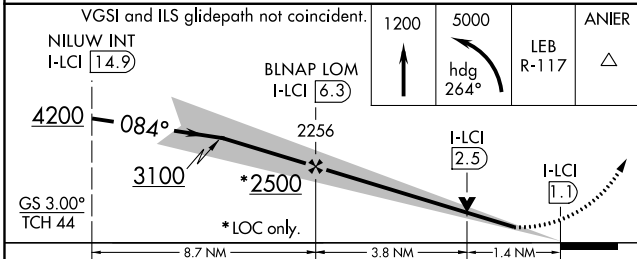
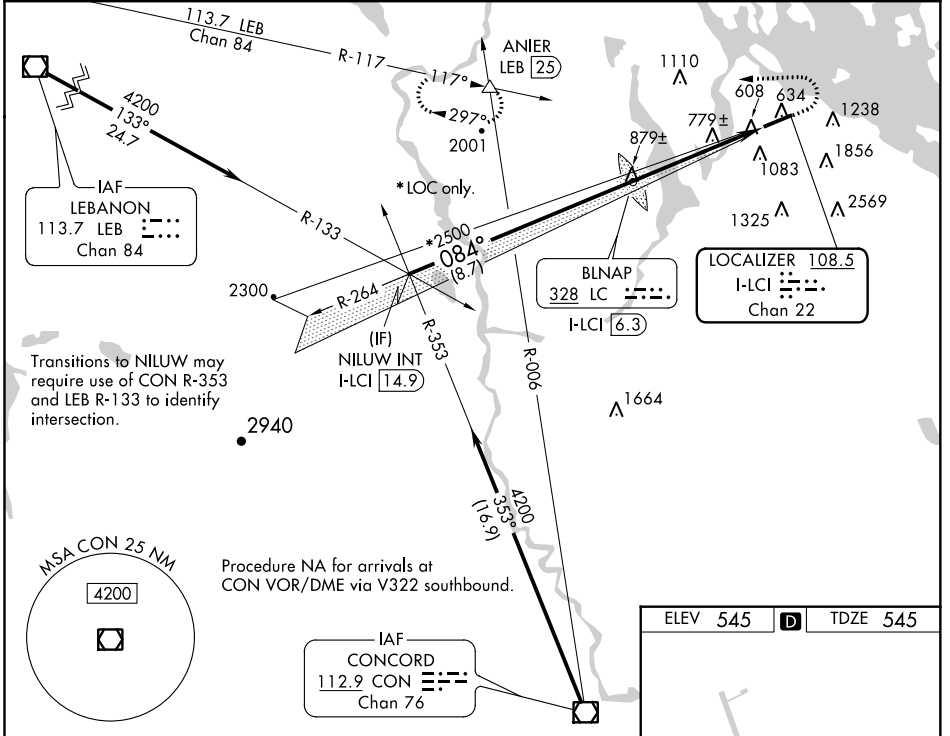


|  |                        |                             |   |
|--|------------------------|-----------------------------|---|
| LOC/DME I-LCI<br><b>108.5</b><br>Chan 22 | APP CRS<br><b>084°</b> | Rwy Idg<br>TDZE<br>Apt Elev | <b>5646</b><br><b>545</b><br><b>545</b> |
|--|------------------------|-----------------------------|---|

# ILS or LOC RWY 8

LACONIA MUNI (LCI)

|   |                            |   |                           |
|---|----------------------------|---|---------------------------|
| <p>VDP NA when using Concord altimeter setting. If local altimeter setting not received, use Concord altimeter setting and increase all DA/MDA 80 feet. For inop MALSR increase S-ILS 8 all Cats visibility to 1 mile. Night landing Rwy 26 NA.</p> | MALSR                      | MISSED APPROACH: Climb to 1200 then climbing left turn to 5000 via heading 264° and LEB VOR/DME R-117 to ANIER INT/LEB 25 DME and hold, continue climb-in-hold to 5000. |                           |
|   | AWOS-3PT<br><b>133.525</b> | BOSTON APP CON<br><b>134.75 254.25</b>  | CLNC DEL<br><b>119.85</b> |



| CATEGORY | A                     | B                        | C                      | D                    |
|----------|-----------------------|--------------------------|------------------------|----------------------|
| S-ILS 8  | 825-1/2 280 (300-1/2) |                          |                        |                      |
| S-LOC 8  | 1040-1/2              | 495 (500-1/2)            | 1040-3/4 495 (500-3/4) | 1040-1 495 (500-1)   |
| CIRCLING | 1420-1 875 (900-1)    | 1600-1 1055 (1100-1 1/2) | 1600-3 1055 (1100-3)   | 2160-3 1615 (1700-3) |

NE-1, 07 DEC 2017 to 04 JAN 2018

NE-1, 07 DEC 2017 to 04 JAN 2018