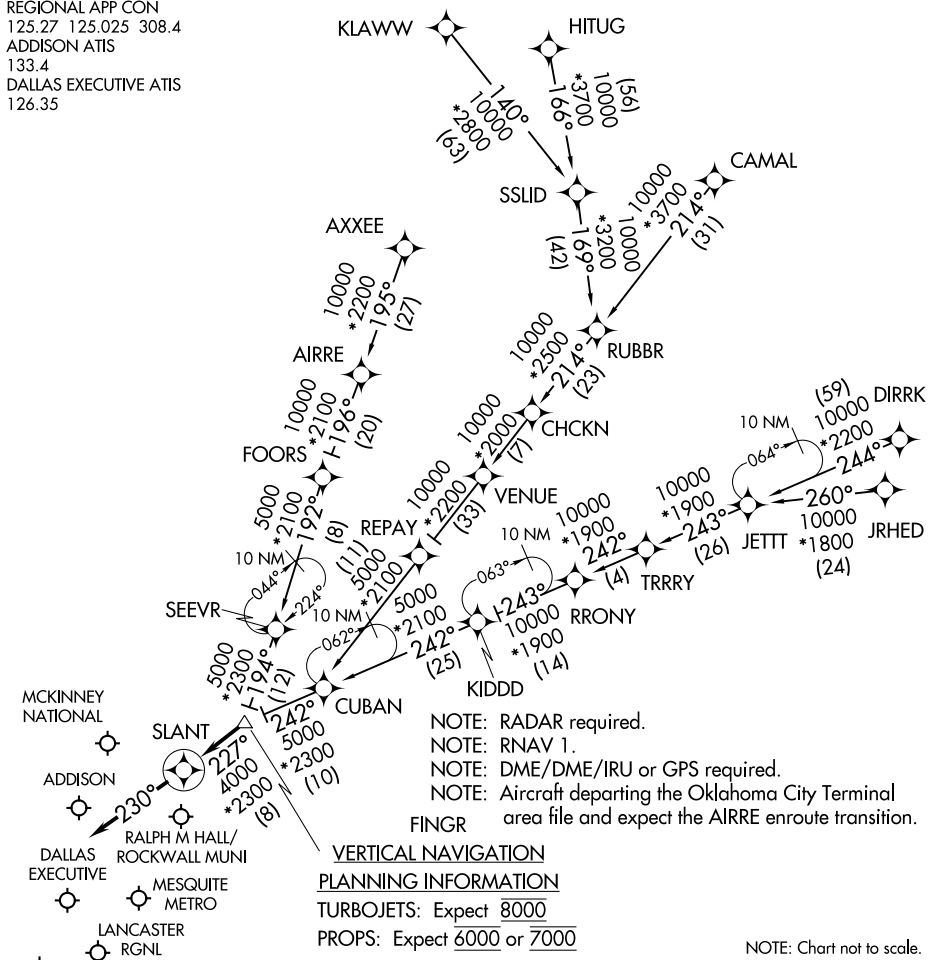


SLANT THREE ARRIVAL (RNAV)

DALLAS, TEXAS

REGIONAL APP CON
125.27 125.025 308.4
ADDISON ATIS
133.4
DALLAS EXECUTIVE ATIS
126.35



NOTE: RADAR required.

NOTE: RNAV 1.

NOTE: DME/DME/IRU or GPS required.

NOTE: Aircraft departing the Oklahoma City Terminal area file and expect the AIRRE enroute transition.

VERTICAL NAVIGATION

PLANNING INFORMATION

TURBOJETS: Expect 8000

PROPS: Expect 6000 or 7000

NOTE: Chart not to scale.

ARRIVAL ROUTE DESCRIPTION

AIRRE TRANSITION (AIRRE.SLANT3): (For traffic filing FL190 and below.)

AXXEE TRANSITION (AXXEE.SLANT3): (For aircraft filing FL230 and below.)

CAMAL TRANSITION (CAMAL.SLANT3)

DIRRK TRANSITION (DIRRK.SLANT3)

HITUG TRANSITION (HITUG.SLANT3)

JRHED TRANSITION (JRHE.SLANT3): (ATC assigned only.)

KLAWW TRANSITION (KLAWW.SLANT3)

RRONY TRANSITION (RRONY.SLANT3): (For aircraft filing FL230 and below.)

From FINGR on track 227° to SLANT, then on track 230°.

Expect RADAR vectors to final approach course.

SLANT THREE ARRIVAL (RNAV)

DALLAS, TEXAS