

|                           |                        |                        |
|---------------------------|------------------------|------------------------|
| LOC I-OSH<br><b>110.5</b> | APP CRS<br><b>184°</b> | Rwy ldg<br><b>8002</b> |
|                           |                        | TDZE<br><b>794</b>     |
|                           |                        | Apt Elev<br><b>808</b> |

# LOC/DME BC RWY 18

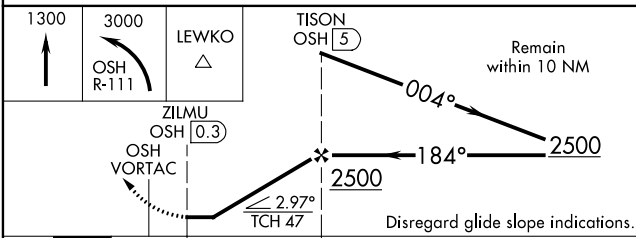
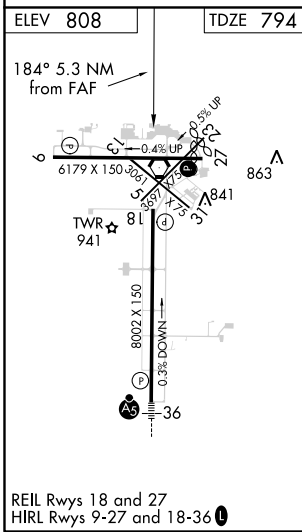
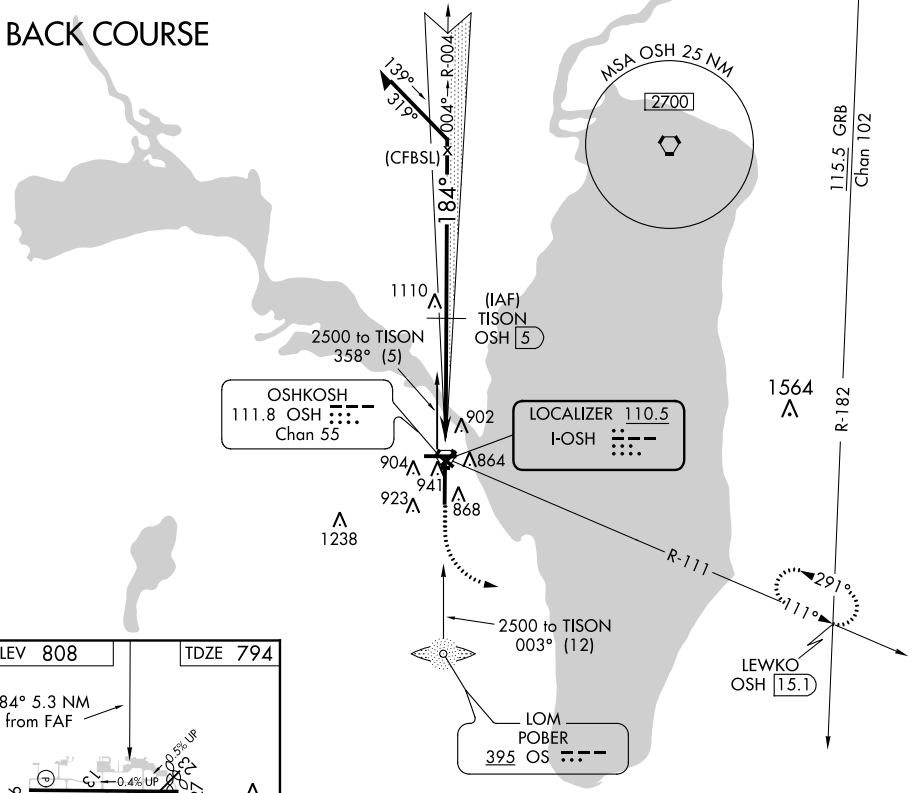
WITTMAN RGNL (OSH)

⚠ Simultaneous reception of I-OSH and OSH DME required. DME from OSH VORTAC. When local altimeter setting not received, use Fond Du Lac altimeter setting and increase all MDA 40 feet; increase Circling Cat D visibility ¼ mile. Circling to Rwy 5, 23, and 31 NA at night. Helicopter visibility reduction below ¾ SM NA.

MISSED APPROACH: Climb to 1300 then climbing left turn to 3000 on OSH R-111 to LEWKO INT/OSH 1.5.1 DME and hold.

|                      |   |  |                         |                         |
|----------------------|---|--|-------------------------|-------------------------|
| ATIS<br><b>125.9</b> | MILWAUKEE APP CON<br><b>127.0 263.075</b> | OSHKOSH TOWER ★<br><b>118.5 (CTAF) 290.9</b> | GND CON<br><b>121.9</b> | UNICOM<br><b>122.95</b> |
|----------------------|---|--|-------------------------|-------------------------|

## BACK COURSE



| CATEGORY          | A                     | B                     | C  | D  |
|-------------------|-----------------------|-----------------------|--|--|
| S-18              | 1240-1                | 446 (500-1)           | 1240-1 <sup>3</sup> / <sub>8</sub>   | 446 (500-1 <sup>3</sup> / <sub>8</sub> ) |
| <b>C</b> CIRCLING | 1280-1<br>472 (500-1) | 1300-1<br>492 (500-1) | 1360-1 <sup>1</sup> / <sub>2</sub><br>552 (600-1 <sup>1</sup> / <sub>2</sub> ) | 1440-2<br>632 (700-2)                    |

EC-3, 07 DEC 2017 to 04 JAN 2018

EC-3, 07 DEC 2017 to 04 JAN 2018