

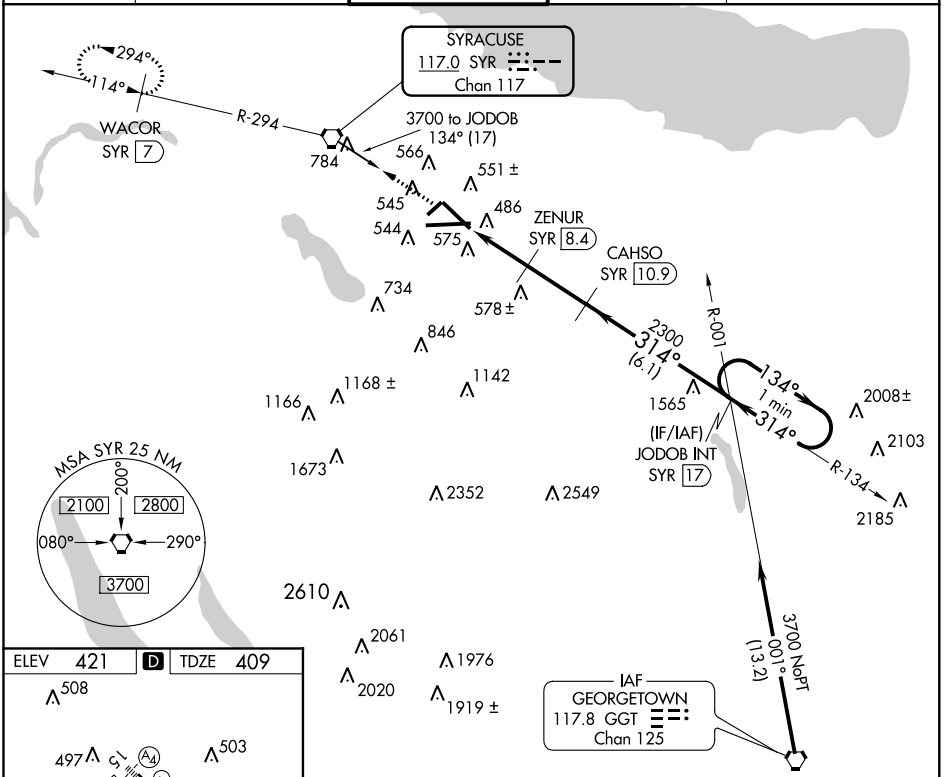
VORTAC SYR 117.0 Chan 117	APP CRS 314°	Rwy Idg TDZE Apt Elev	7500 409 421
--	------------------------	-----------------------------	---

TACAN RWY 33

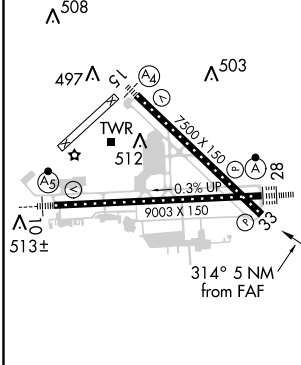
SYRACUSE HANCOCK INTL (SYR)

Helicopter visibility reduction below 3/4 SM NA. MISSED APPROACH: Climb to 3000 direct SYR VORTAC then via SYR VORTAC R-294 to WACOR/7 DME and hold.

ATIS 124.225	SYRACUSE APP CON 134.275 279.6	SYRACUSE TOWER 120.3 239.0	GND CON 121.7 348.6	CLNC DEL 125.05 257.775
------------------------	--	--------------------------------------	-------------------------------	-----------------------------------

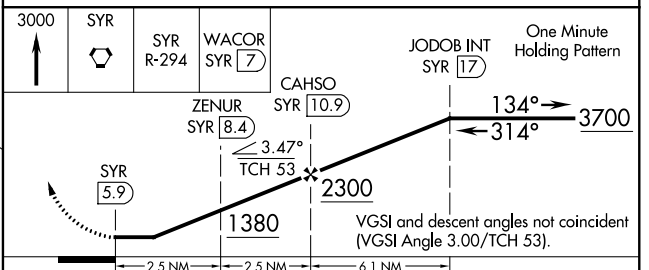


ELEV 421	D	TDZE 409
----------	----------	----------



TDZ/CL Rwy 28
HIRL Rws 10-28 and 15-33
FAF to MAP 5 NM

Knots	60	90	120	150	180
Min:Sec	5:00	3:20	2:30	2:00	1:40



CATEGORY	A	B	C	D
S-33	880/55	471 (500-1¼)	880-1¾	471 (500-1¾)
CIRCLING	880-1 459 (500-1)	900-1 479 (500-1)	900-1½ 479 (500-1½)	980-2 559 (600-2)

NE-2, 07 DEC 2017 to 04 JAN 2018

NE-2, 07 DEC 2017 to 04 JAN 2018