


WAAS CH 40017 W10A	APP CRS 100°	Rwy Idg TDZE 421 Apt Elev 421	9003
--	------------------------	---	-------------

RNAV (GPS) Z RWY 10

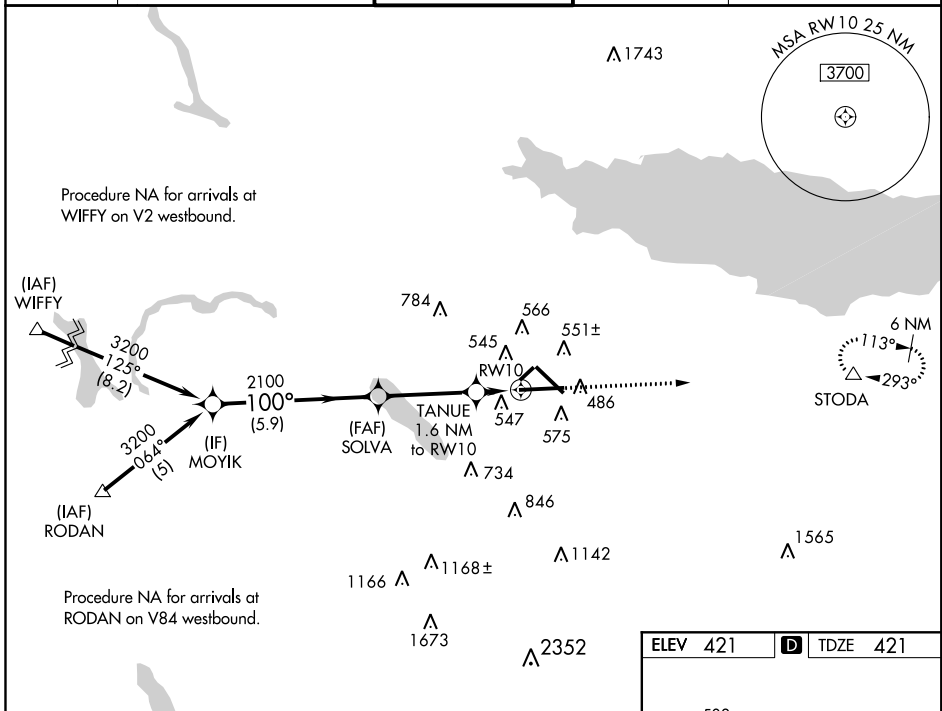
SYRACUSE HANCOCK INTL (SYR)

▼ For uncompensated Baro-VNAV systems, LNAV/VNAV NA below -21°C (-6°F) or above 54°C (130°F). DME/DME RNP-0.3 NA. For inop MALSR, increase LNAV/VNAV all Cats visibility to RVR 4500. ** RVR 1800 authorized with use of FD or AP or HUD to DA.

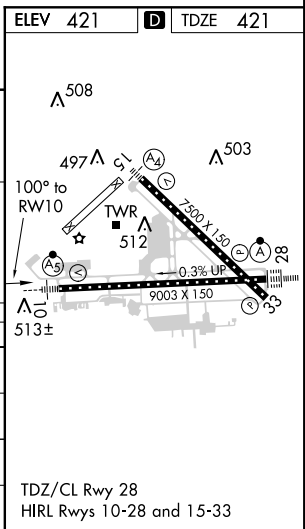
MALSR 

MISSED APPROACH: Climb to 3000 direct STODA and hold.

ATIS 124.225	SYRACUSE APP CON 134.275 279.6	SYRACUSE TOWER 120.3 239.0	GND CON 121.7 348.6	CLNC DEL 125.05 257.775
------------------------	--	--------------------------------------	-------------------------------	-----------------------------------



MOYIK	SOLVA	TANUE	3000	STODA
3200	2100	1.6 NM to RWY10	↑	△
100°		*1 NM to RWY10	*LNAV only	
GP 3.00°				
TCH 55				
	5.9 NM	3.5 NM	0.6 NM	1 NM
			*980	
CATEGORY	A	B	C	D
LPV DA**	621/24		200 (200-½)	
LNAV/VNAV DA	720/24		299 (300-½)	
LNAV MDA	800/24		379 (400-½)	
	379 (400-½)		800/35	
CIRCLING	880-1		980-2	
	459 (500-1)		559 (600-2)	



NE-2, 07 DEC 2017 to 04 JAN 2018

NE-2, 07 DEC 2017 to 04 JAN 2018