

APP CRS	Rwy Idg	<b>9003</b>
<b>280°</b>	TDZE	<b>413</b>
	Apt Elev	<b>421</b>

# RNAV (RNP) Y RWY 28

SYRACUSE HANCOCK INTL (SYR)

**GPS required.** For uncompensated Baro-VNAV systems, procedure NA below -18°C (0°F) or above 54°C (130°F). For inoperative ALSF-2, increase RNP 0.15 all Cats visibility to 1½. For inoperative ALSF-2, increase RNP 0.30 all Cats visibility to 1¾.

ALSF-2



**MISSED APPROACH:** Climb to 3000 on track 280° to MOYIK and on track 306° to WIFFY and hold.

ATIS <b>124.225</b>	SYRACUSE APP CON <b>134.275 279.6</b>	SYRACUSE TOWER <b>120.3 239.0</b>	GND CON <b>121.7 348.6</b>	CLNC DEL <b>125.05 257.775</b>
------------------------	--	--------------------------------------	-------------------------------	-----------------------------------

**MISSED APCH FIX**

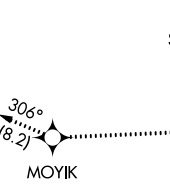
7 NM



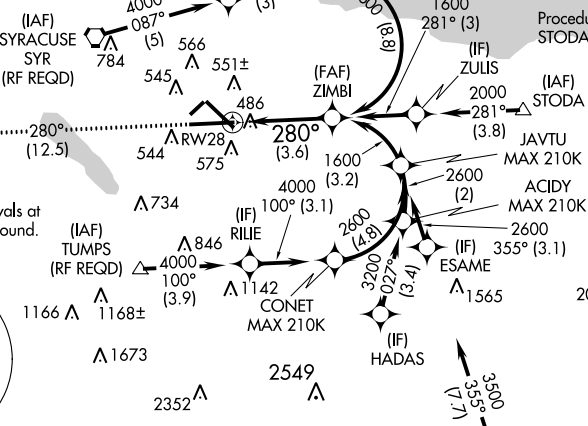
Procedure NA for arrivals on SYR VORTAC airway radials 018 CW 154.



Procedure NA for arrivals at STODA on V2 eastbound.

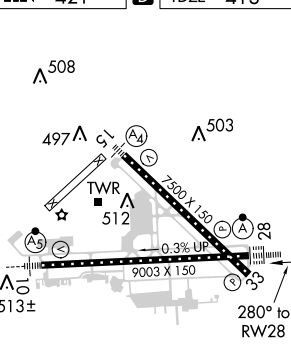


Procedure NA for arrivals at TUMPS on V29 northbound.

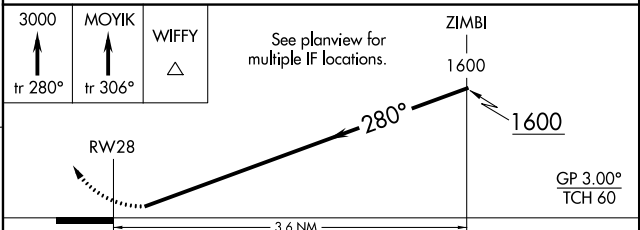


Procedure NA for arrivals on GGT VORTAC airway radials 284 CW 075.

ELEV 421	<b>D</b>	TDZE 413
----------	----------	----------



TDZ/CL Rwy 28  
HIRL Rwy 10-28 and 15-33



CATEGORY	A	B	C	D
RNP 0.15 DA		862/55	449 (500-1½)	
RNP 0.30 DA		957-1¾	544 (600-1¾)	

## AUTHORIZATION REQUIRED

NE-2, 07 DEC 2017 to 04 JAN 2018

NE-2, 07 DEC 2017 to 04 JAN 2018