

LOC/DME I-SYR <b>109.9</b> Chan <b>36</b>	APP CRS <b>280°</b>	Rwy Idg TDZE Apt Elev	<b>9003</b> <b>413</b> <b>421</b>
---	------------------------	-----------------------------	---

# ILS or LOC RWY 28

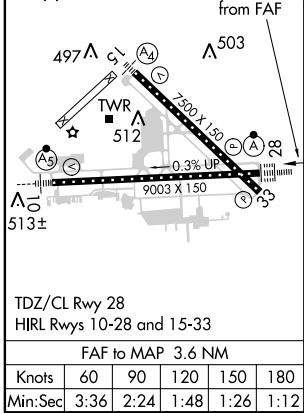
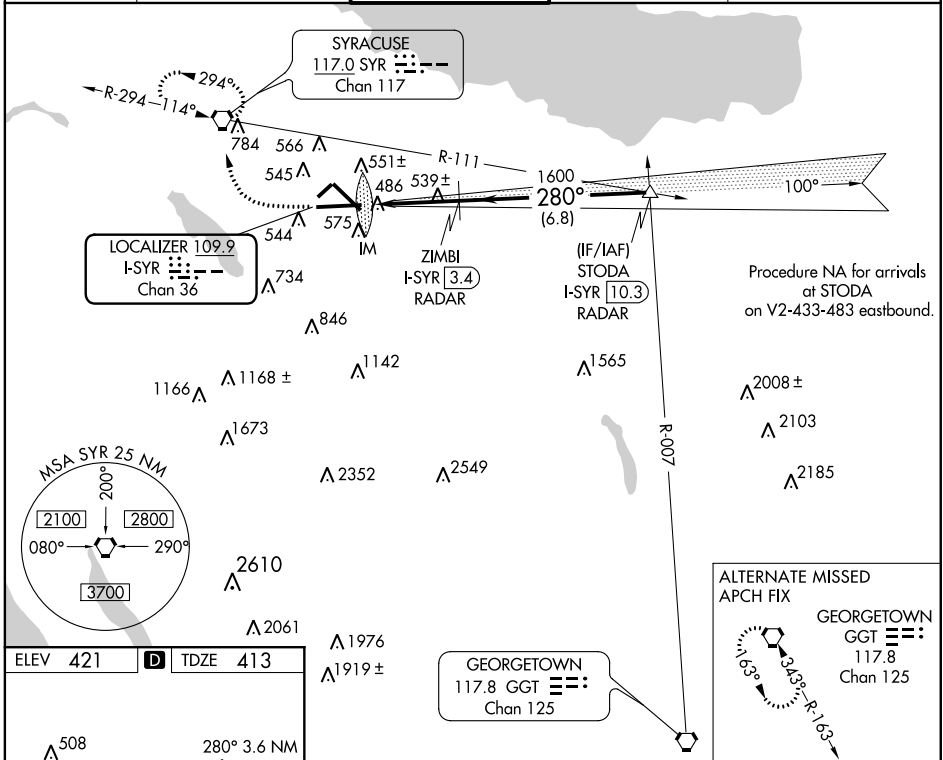
SYRACUSE HANCOCK INTL (SYR)

**⚠** For inoperative ALSF-2, increase S-LOC 28 Cats A and B visibility to RVR 5500 and Cats C and D visibility to RVR 6000. DME or radar required.

ALSF-2

MISSED APPROACH: Climb to 1100 then climbing right turn to 3000 direct SYR VORTAC and hold, continue climb-in-hold to 3000.

ATIS <b>124.225</b>	SYRACUSE APP CON <b>134.275 279.6</b>	SYRACUSE TOWER <b>120.3 239.0</b>	GND CON <b>121.7 348.6</b>	CLNC DEL <b>125.05 257.775</b>
------------------------	--	--------------------------------------	-------------------------------	-----------------------------------



CATEGORY	A	B	C	D
S-ILS 28	613/18 200 (200-½)			
S-LOC 28	800/24	387 (400-½)	800/35	387 (400-¾)
CIRCLING	880-1 459 (500-1)	900-1 479 (500-1)	900-1½ 479 (500-1½)	980-2 559 (600-2)

NE-2, 07 DEC 2017 to 04 JAN 2018

NE-2, 07 DEC 2017 to 04 JAN 2018