


LOC/DME I-MRZ <b>109.9</b> Chan 36	APP CRS <b>100°</b>	Rwy Idg TDZE Apt Elev <b>9003</b> <b>421</b> <b>421</b>
--	------------------------	--

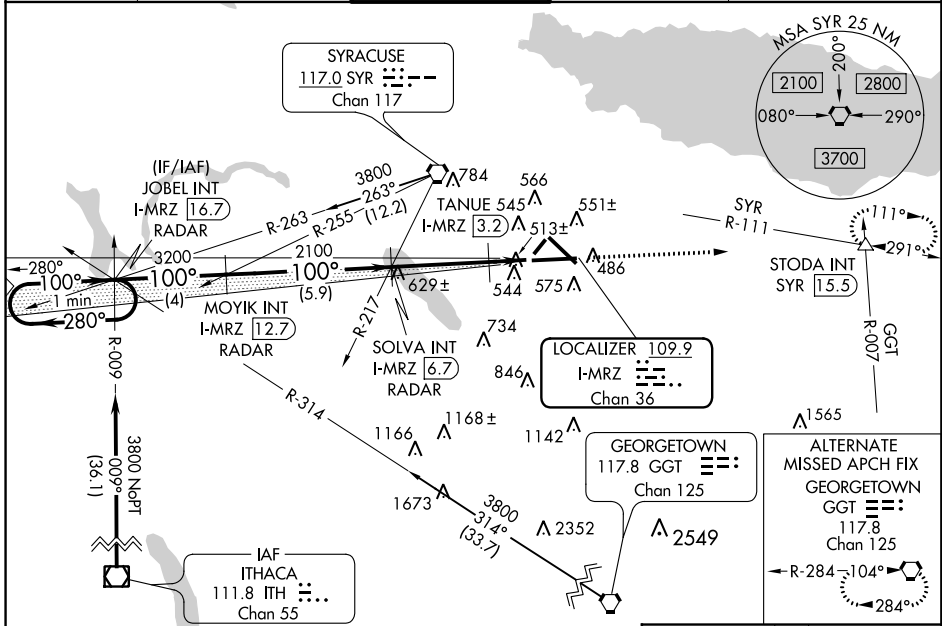
# ILS or LOC RWY 10

SYRACUSE HANCOCK INTL (SYR)

**⚠** \*\*RVR 1800 authorized with the use of FD or AP or HUD to DA.  
For inoperative MALSR, increase S-LOC 10 Cats A and B visibility to RVR 5500 and Cats C and D visibility to 1/4. TANUE fix minimums, for inoperative MALSR, increase S-LOC 10 all Cats visibility to RVR 5500.

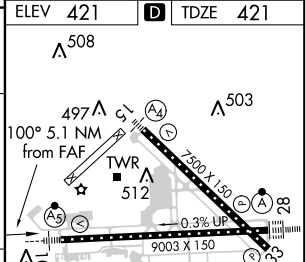
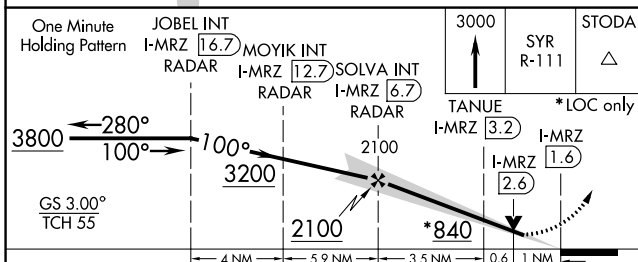
**MALSR**  
  
MISSED APPROACH: Climb to 3000 via SYR VORTAC R-111 to STODA Int/SYR 15.5 DME and hold.

ATIS <b>124.225</b>	SYRACUSE APP CON <b>134.275 279.6</b>	SYRACUSE TOWER <b>120.3 239.0</b>	GND CON <b>121.7 348.6</b>	CLNC DEL <b>125.05 257.775</b>
------------------------	--	--------------------------------------	-------------------------------	-----------------------------------



NE-2, 07 DEC 2017 to 04 JAN 2018

NE-2, 07 DEC 2017 to 04 JAN 2018



CATEGORY	A	B	C	D
S-ILS 10	<b>**621/24</b> 200 (200-1/2)			
S-LOC 10	840/24	419 (500-1/2)	840/40	419 (500-3/4)
CIRCLING	880-1 459 (500-1)	900-1 479 (500-1)	900-1 1/2 479 (500-1 1/2)	980-2 559 (600-2)
TANUE FIX MINIMUMS				
S-LOC 10	780/24	359 (400-1/2)	780/35	359 (400-3/4)
CIRCLING	880-1 459 (500-1)	900-1 479 (500-1)	900-1 1/2 479 (500-1 1/2)	980-2 559 (600-2)

ELEV 421					TDZE 421									
3000					SYR R-111					STODA				
GS 3.00° TCH 55					*LOC only					TDZ/CL Rwy 28				
4 NM					5.9 NM					3.5 NM				
0.6 NM					1 NM					HRL Rwys 10-28 and 15-33				
FAF to MAP 5.1 NM					Knots					Min:Sec				
513±					60 90 120 150 180					5:06 3:24 2:33 2:02 1:42				