

# THREE RIVERS FOUR DEPARTURE (RNAV)

SC-3: 07 DEC 2017 to 04 JAN 2018

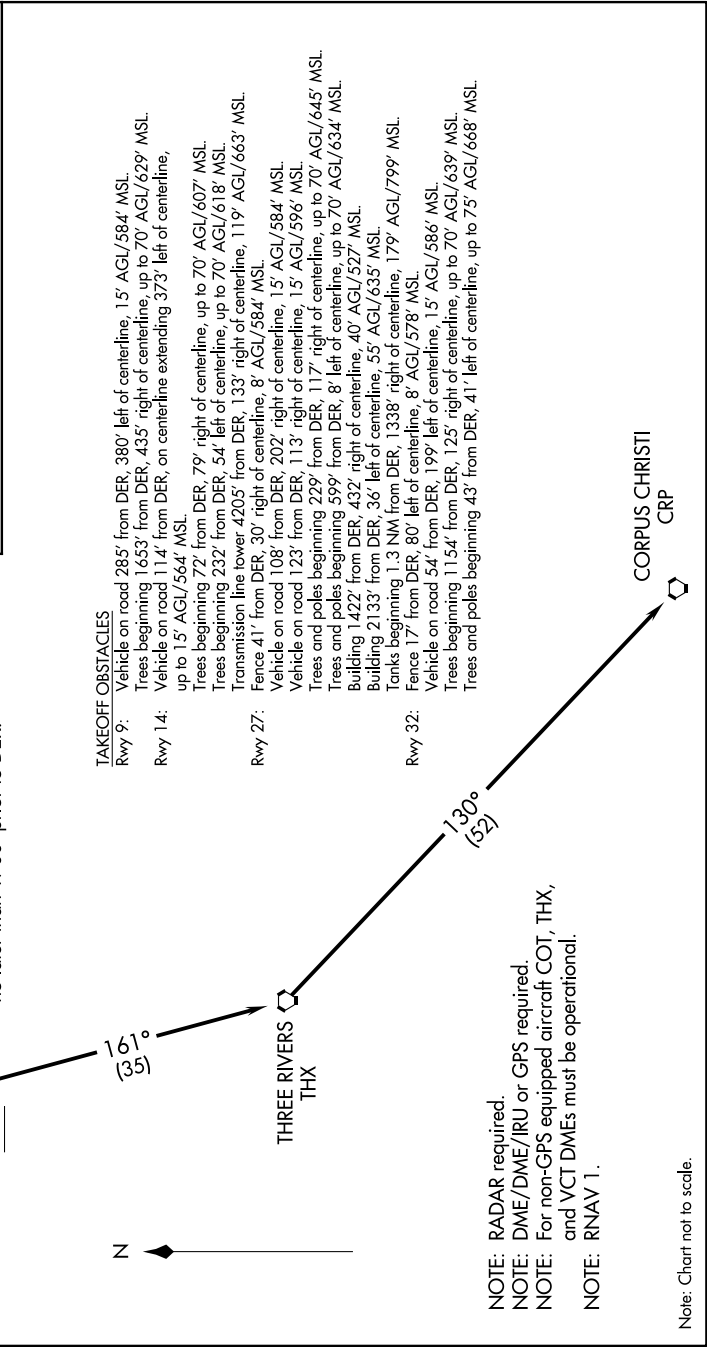
**DEPARTURE ROUTE DESCRIPTION**

**TAKEOFF RWYS 9, 14, 27, 32:** Climb on assign heading and altitude for RADAR vectors to YENNS, thence . . .

. . . on depicted route to CRP VORTAC. Expect filed altitude 10 minutes after departure.

**TAKEOFF MINIMUMS**  
Rwys 14, 32: Standard.  
Rwy 9: Standard with minimum climb of 225' per NM to 1900.  
Rwy 27: 300-1 $\frac{3}{4}$  or standard with minimum climb of 221' per NM to 900, or alternatively, with standard takeoff minimums and normal 200' per NM climb gradient, takeoff must occur no later than 1700' prior to DER.

**TAKEOFF OBSTACLES**  
Rwy 9: Vehicle on road 285' from DER, 380' left of centerline, 15' AGL/584' MSL.  
Trees beginning 1653' from DER, 435' right of centerline, up to 70' AGL/629' MSL.  
Vehicle on road 114' from DER, on centerline extending 373' left of centerline, up to 15' AGL/564' MSL.  
Rwy 14: Trees beginning 72' from DER, 79' right of centerline, up to 70' AGL/607' MSL.  
Trees beginning 232' from DER, 54' left of centerline, up to 70' AGL/618' MSL.  
Transmission line tower 4205' from DER, 133' right of centerline, 119' AGL/663' MSL.  
Rwy 27: Fence 41' from DER, 30' right of centerline, 8' AGL/384' MSL.  
Vehicle on road 108' from DER, 202' right of centerline, 15' AGL/584' MSL.  
Vehicle on road 123' from DER, 113' right of centerline, 15' AGL/596' MSL.  
Trees and poles beginning 229' from DER, 117' right of centerline, up to 70' AGL/645' MSL.  
Trees and poles beginning 599' from DER, 8' left of centerline, up to 70' AGL/634' MSL.  
Rwy 32: Building 11422' from DER, 432' right of centerline, 40' AGL/527' MSL.  
Building 21333' from DER, 36' left of centerline, 55' AGL/635' MSL.  
Tanks beginning 1.3 NM from DER, 1338' right of centerline, 179' AGL/799' MSL.  
Fence 17' from DER, 80' left of centerline, 8' AGL/578' MSL.  
Vehicle on road 54' from DER, 199' left of centerline, 15' AGL/586' MSL.  
Trees beginning 1154' from DER, 125' right of centerline, up to 70' AGL/639' MSL.  
Trees and poles beginning 43' from DER, 41' left of centerline, up to 75' AGL/668' MSL.



NOTE: RADAR required.  
NOTE: DME/DME/IRU or GPS required.  
NOTE: For non-GPS equipped aircraft COT, THX, and VCT DMEs must be operational.  
NOTE: RNAV 1.

Note: Chart not to scale.

SC-3: 07 DEC 2017 to 04 JAN 2018