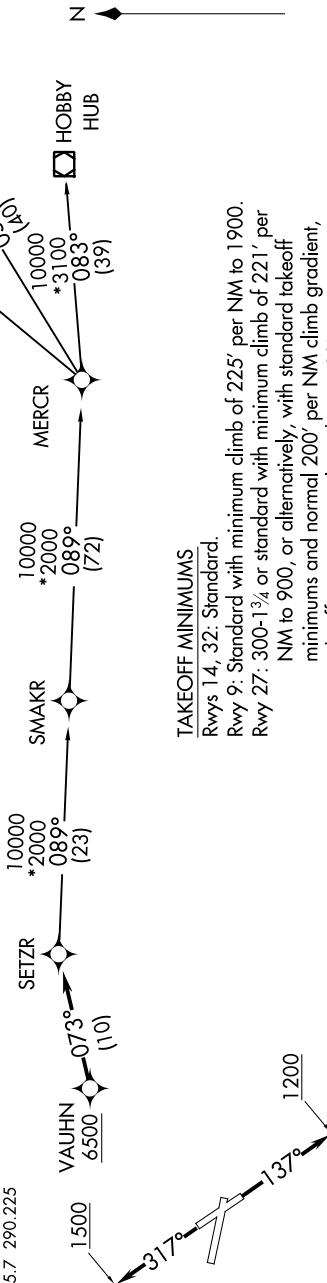


SC-3: 07 DEC 2017 to 04 JAN 2018

ATIS 128.8
CLINC DEL 121.7
GND CON 121.7 379.9
STINSON TOWER * 118.2 379.9
REGIONAL DEP CON 125.7 290.225

NOTE: RADAR required.
NOTE: DME/DME/IRU or GPS required.
NOTE: For use by turbojet and turboprop aircraft only.
NOTE: RNAV 1



TAKEOFF MINIMUMS

Rwys 14, 32: Standard.
Rwy 9: Standard with minimum climb of 225' per NM to 1900.
Rwy 27: 300-1/4 or standard with minimum climb of 221' per NM to 900, or alternatively, with standard takeoff minimums and normal 200' per NM climb gradient, takeoff must occur no later than 1700' prior to DER.

NOTE: Chart not to scale

DEPARTURE ROUTE DESCRIPTION

TAKEOFF RWAY 9: Climb on assigned heading for RADAR vectors to VAUHN, thence ...
TAKEOFF RWAY 14: Climb heading 137° to 1200, then on assigned heading for RADAR vectors to VAUHN, thence ...
TAKEOFF RWAY 27: Climb on assigned heading for RADAR vectors to VAUHN, thence ...
TAKEOFF RWAY 32: Climb heading 317° to 1500, then on assigned heading for RADAR vectors to VAUHN, thence ...

... on track 073° to SETZR, then on (transition) maintain 6500 or as assigned by ATC. Expect filed altitude 10 minutes after departure.

- HOBBS TRANSITION (SETZR2.HUB)
- HUMBLE TRANSITION (SETZR2.IAH)
- SMAKR TRANSITION (SETZR2.SMAKR)
- WYLSN TRANSITION (SETZR2.WYLSN)

SC-3: 07 DEC 2017 to 04 JAN 2018