

WAAS CH 61135 W36A	APP CRS 004°	Rwy Idg 4000 TDZE 547 Apt Elev 551
--	------------------------	---

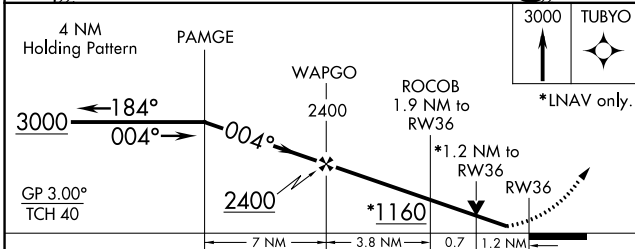
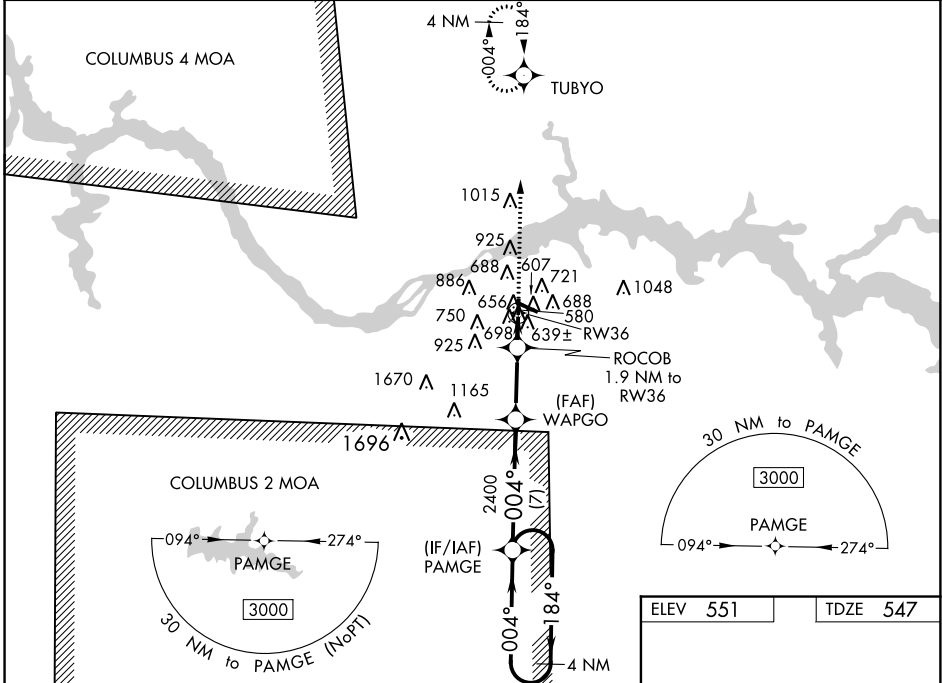
RNAV (GPS) RWY 36

NORTHWEST ALABAMA RGNL (MSL)

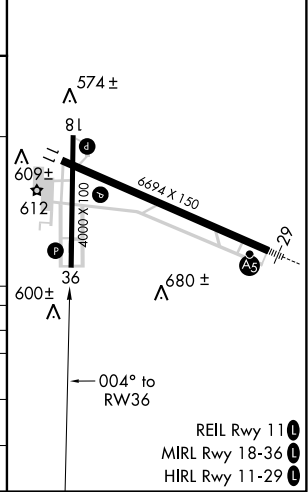
⚠ Circling to Rwy 18 NA at night. For uncompensated Baro-VNAV systems, LNAV/VNAV NA below -4°C (25°F) or above 54°C (130°F). DME/DME RNP-0.3 NA. Baro-VNAV and VDP NA when using Decatur altimeter setting. When local altimeter setting not received, use Decatur altimeter setting and increase LPV DA to 874, LNAV/VNAV DA to 1012 and all MDA 100 feet, increase LPV and LNAV/VNAV all Cats visibility ¼ mile, increase LNAV Cats C/D visibility ¼ mile, and Circling Cats C/D visibility ½ mile.

MISSED APPROACH:
Climb to 3000 direct TUBYO and hold.

ASOS 119.425	MEMPHIS CENTER 120.8 307.0	GCO 121.725	UNICOM 123.05 (CTAF) 0
------------------------	--------------------------------------	-----------------------	----------------------------------



ELEV 551	TDZE 547
-----------------	-----------------



CATEGORY	A	B	C	D
LPV DA		797-7/8	250 (300-7/8)	
LNAV/VNAV DA		935-13/8	388 (400-13/8)	
LNAV MDA	960-1	413 (500-1)	960-11/8	413 (500-11/8)
C CIRCLING	1040-1	489 (500-1)	1280-2 729 (800-2)	1280-21/4 729 (800-21/4)

- REIL Rwy 11 1
- MIRL Rwy 18-36 1
- HIRL Rwy 11-29 1

SE-4, 07 DEC 2017 to 04 JAN 2018

SE-4, 07 DEC 2017 to 04 JAN 2018