

WAAS CH <b>40000</b> <b>W29A</b>	APP CRS <b>297°</b>	Rwy Idg <b>6694</b> TDZE <b>551</b> Apt Elev <b>551</b>
--	------------------------	---

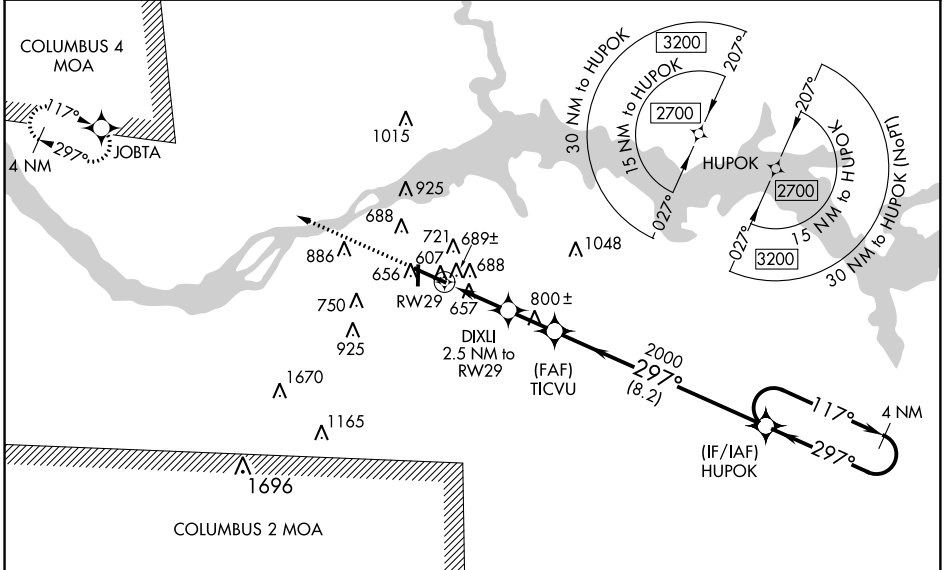
# RNAV (GPS) RWY 29

NORTHWEST ALABAMA RGNL (MSL)

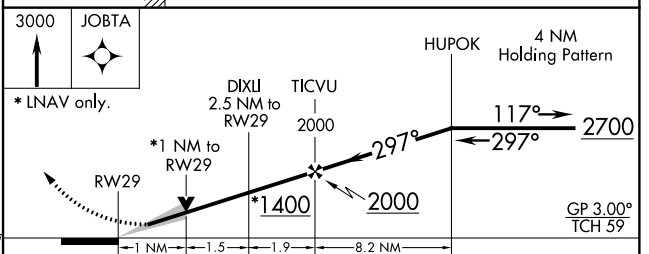
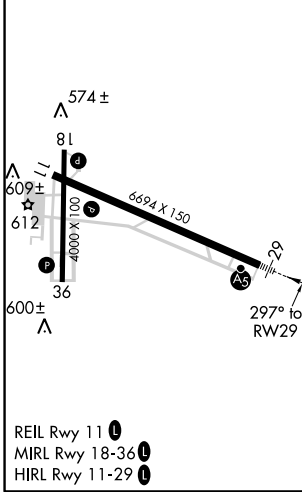
**⚠** Circling to Rwy 18 NA at night. For uncompensated Baro-VNAV systems, LNAV/VNAV NA below -4° C (25° F) or above 54° C (130° F). DME/DME RNP-0.3 NA. When local altimeter setting not received use Decatur altimeter setting and increase LPV DA to 833, LNAV/VNAV DA to 1044 and all MDA 100 feet; increase LNAV/VNAV all Cats visibility ¼ mile, and LNAV Cat C and D visibility ½ mile, and Circling Cat C and D visibility ½ mile. Baro-VNAV and VDP NA when using Decatur altimeter setting. For inop MALSR when using Decatur altimeter setting, increase LPV all Cats visibility to ¾ mile, and LNAV Cats C and D visibility to 1 ½ mile.

**MALSR**  
**AS**  
MISSED APPROACH:  
Climb to 3000 direct  
JOBTA and hold.

ASOS <b>119.425</b>	MEMPHIS CENTER <b>120.8 307.0</b>	GCO <b>121.725</b>	UNICOM <b>123.05 (CTAF) 0</b>
------------------------	--------------------------------------	-----------------------	----------------------------------



ELEV <b>551</b>	TDZE <b>551</b>
-----------------	-----------------



CATEGORY	A	B	C	D
LPV DA		751-½	200 (200-½)	
LNAV/VNAV DA		962-¾	411 (500-¾)	
LNAV MDA	940-½	389 (400-½)	940-⅝	389 (400-⅝)
<b>C</b> CIRCLING	1040-1	489 (500-1)	1280-2 729 (800-2)	1280-2¼ 729 (800-2¼)

SE-4, 07 DEC 2017 to 04 JAN 2018

SE-4, 07 DEC 2017 to 04 JAN 2018