

WAAS CH 56435 W18A	APP CRS 184°	Rwy Idg TDZE Apt Elev	4000 547 551
----------------------------------------	------------------------	-----------------------------	-----------------------------------------

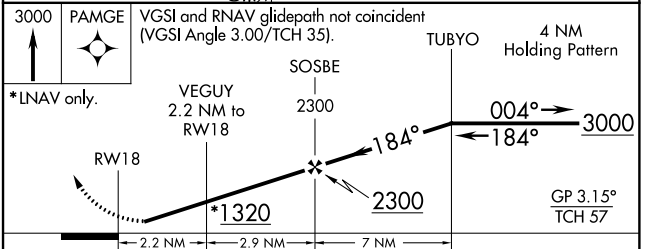
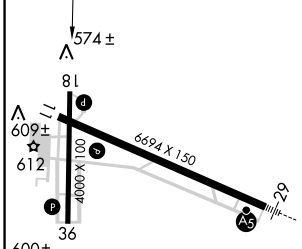
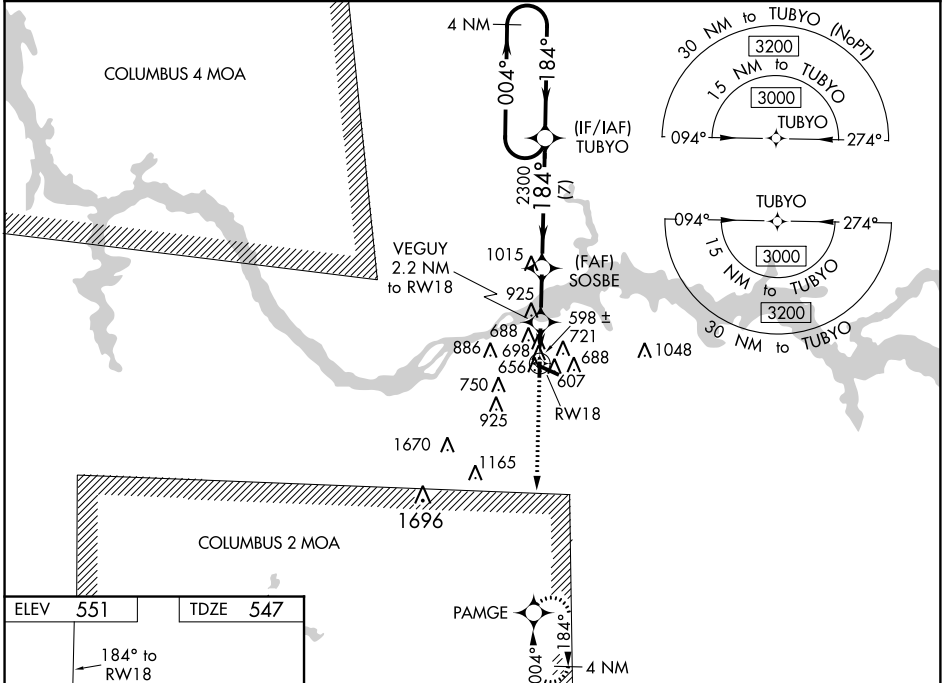
RNAV (GPS) RWY 18

NORTHWEST ALABAMA RGNL (MSL)

⚠ Baro-VNAV NA when using Decatur altimeter setting. For uncompensated Baro-VNAV systems, LNAV/VNAV NA below -4°C (25°F) or above 54°C (130°F). DME/DME RNP-0.3 NA.
⚠ Helicopter visibility reduction below 1 SM NA. Rwy 18 Straight-in and Circling Minimums NA at night. When local altimeter setting not received, use Decatur altimeter setting and increase LPV DA to 872, LNAV/VNAV DA to 1057 and all MDA 100 feet, increase LNAV/VNAV all Cats visibility and LNAV Cat C visibility ¼ mile, increase Circling Cat C visibility ½ mile.

MISSED APPROACH:
Climb to 3000 direct PAMGE and hold.

ASOS 119.425	MEMPHIS CENTER 120.8 307.0	GCO 121.725	UNICOM 123.05 (CTAF)
------------------------	--------------------------------------	-----------------------	--------------------------------



CATEGORY	A	B	C	D
LPV DA		797-1	250 (300-1)	NA
LNAV/VNAV DA		982-1 ³ / ₈	435 (500-1 ³ / ₈)	NA
LNAV MDA	960-1	413 (500-1)	960-1 ¹ / ₄ 413 (500-1 ¹ / ₄)	NA
C CIRCLING	1040-1	489 (500-1)	1280-2 729 (800-2)	NA

SE-4, 07 DEC 2017 to 04 JAN 2018

SE-4, 07 DEC 2017 to 04 JAN 2018