

WAAS CH 90518 W11A	APP CRS 117°	Rwy Idg TDZE Apt Elev	6694 544 551
--	------------------------	-----------------------------	---

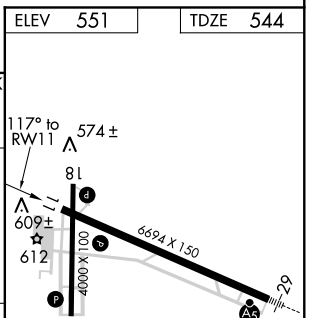
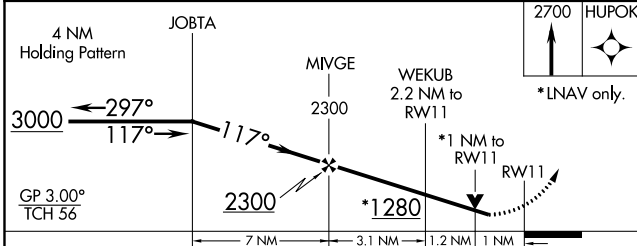
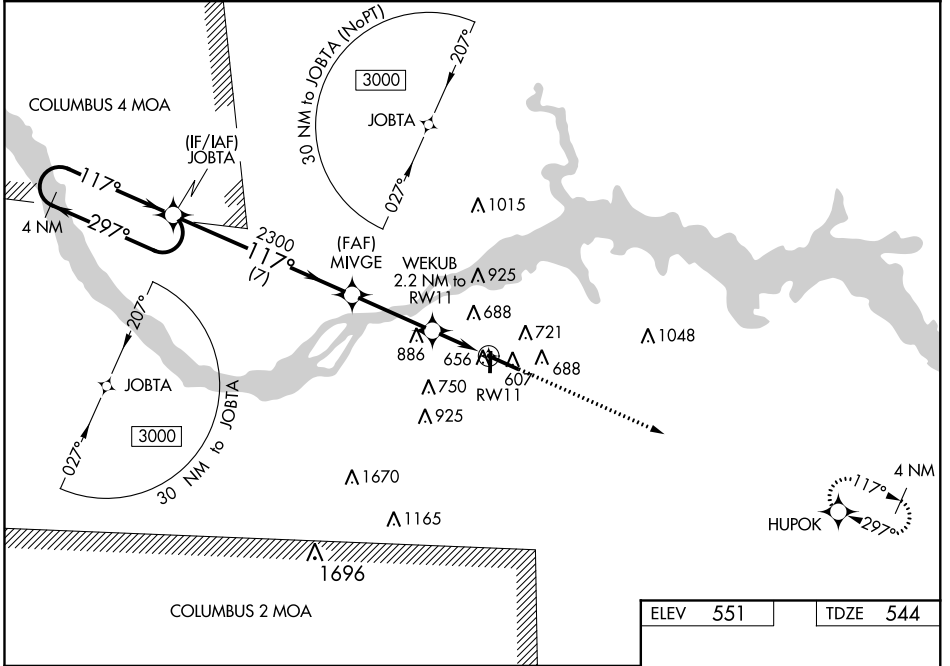
RNAV (GPS) RWY 11

NORTHWEST ALABAMA RGNL (MSL)

▼ Circling to Rwy 18 NA at night. For uncompensated Baro-VNAV systems, LNAV/VNAV NA below -4°C (25°F) or above 54°C (130°F). DME/DME RNP-0.3 NA. When local altimeter setting not received use Decatur altimeter setting and increase LPV DA to 932 feet, LNAV/VNAV DA to 1023 feet and all MDA 100 feet; increase LPV all Cats visibility ¼ mile, LNAV/VNAV all Cats visibility ⅜ mile, LNAV Cat C and D visibility ⅜ mile and Circling Cat C and D visibility ½ mile. Baro-VNAV and VDP NA when using Decatur altimeter setting. Helicopter visibility reduction below ¾ SM NA.

▲ MISSED APPROACH: Climb to 2700 direct HUPOK and hold.

ASOS 119.425	MEMPHIS CENTER 120.8 307.0	GCO 121.725	UNICOM 123.05 (CTAF) 0
------------------------	--------------------------------------	-----------------------	----------------------------------



CATEGORY	A	B	C	D
LPV DA		851-1	307 (300-1)	
LNAV/VNAV DA		942-1¼	398 (400-1¼)	
LNAV MDA		920-1	376 (400-1)	
C CIRCLING	1040-1	489 (500-1)	1280-2 729 (800-2)	1280-2¼ 729 (800-2¼)

ELEV	551	TDZE	544
REIL Rwy 11	0	MIRL Rwy 18-36	0
HIRL Rwy 11-29	0		

SE-4, 07 DEC 2017 to 04 JAN 2018

SE-4, 07 DEC 2017 to 04 JAN 2018