

LOC I-MSL <b>109.7</b>	APP CRS <b>297°</b>	Rwy Idg 6694	TDZE 551
		Apt Elev 551	

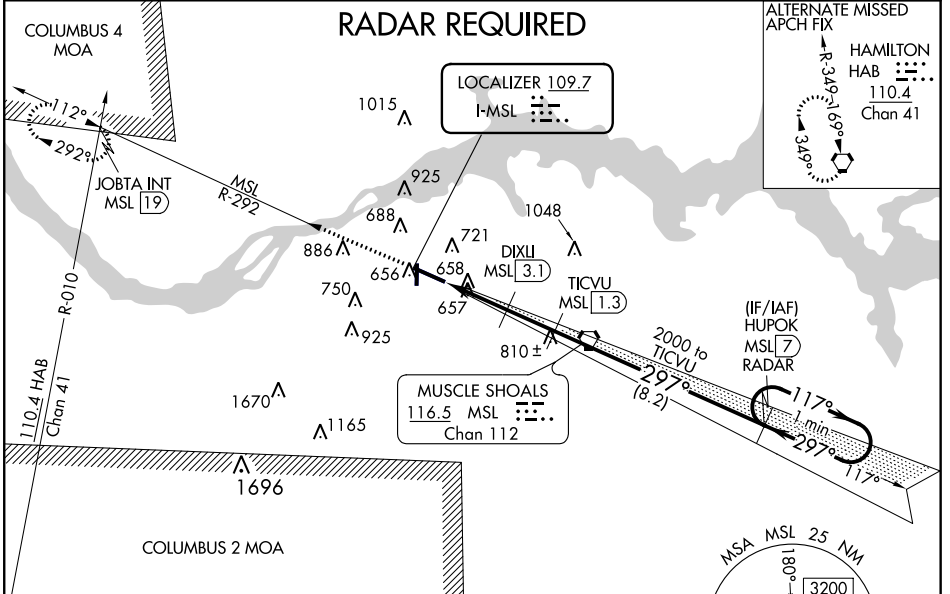
# ILS Z or LOC/DME Z RWY 29

NORTHWEST ALABAMA RGNL (MSL)

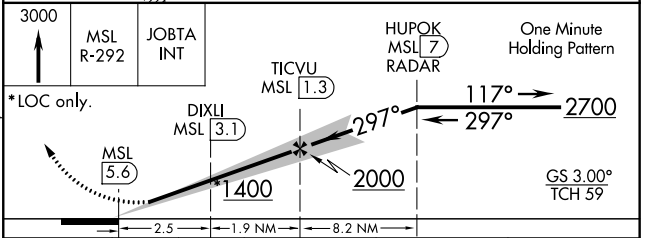
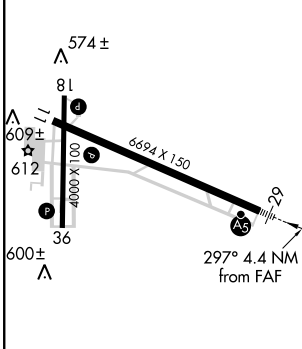
**⚠** Circling to Rwy 18 NA at night. When local altimeter setting not received, use Decatur altimeter setting: increase DA to 833 feet and all MDA 100 feet; increase S-LOC 29 Cat C, D visibility 3/8 mile and Circling Cat C, D visibility 1/2 mile. DME from MSL VORTAC. Simultaneous reception of I-MSL and MSL DME required. For inop MALSR increase S-LOC 29 Cats C/D visibility to 1 mile. For inop MALSR when using Decatur altimeter setting, increase S-ILS 29 all Cats visibility to 3/8 mile, and increase LNAV Cats C/D to 1 1/8 mile.

**MALSR**  
MISSED APPROACH: Climb to 3000 on MSL VORTAC R-292 to JOBTA INT/MSL VORTAC 19 DME and hold.

ASOS <b>119.425</b>	MEMPHIS CENTER <b>120.8 307.0</b>	GCO <b>121.725</b>	UNICOM <b>123.05 (CTAF)</b>
------------------------	--------------------------------------	-----------------------	--------------------------------



ELEV 551	TDZE 551
----------	----------



REIL Rwy 11 **Ⓛ**  
MIRL Rwy 18-36 **Ⓛ**  
HIRL Rwy 11-29 **Ⓛ**

FAF to MAP 4.4 NM

Knots	60	90	120	150	180
Min:Sec	4:24	2:56	2:12	1:46	1:28

CATEGORY	A	B	C	D
S-ILS 29		751-1/2	200 (200-1/2)	
S-LOC 29	920-1/2	369 (400-1/2)	920-5/8	369 (400-5/8)
<b>C</b> CIRCLING	1040-1	489 (500-1)	1280-2 729 (800-2)	1280-2 1/4 729 (800-2 1/4)

SE-4, 07 DEC 2017 to 04 JAN 2018

SE-4, 07 DEC 2017 to 04 JAN 2018