

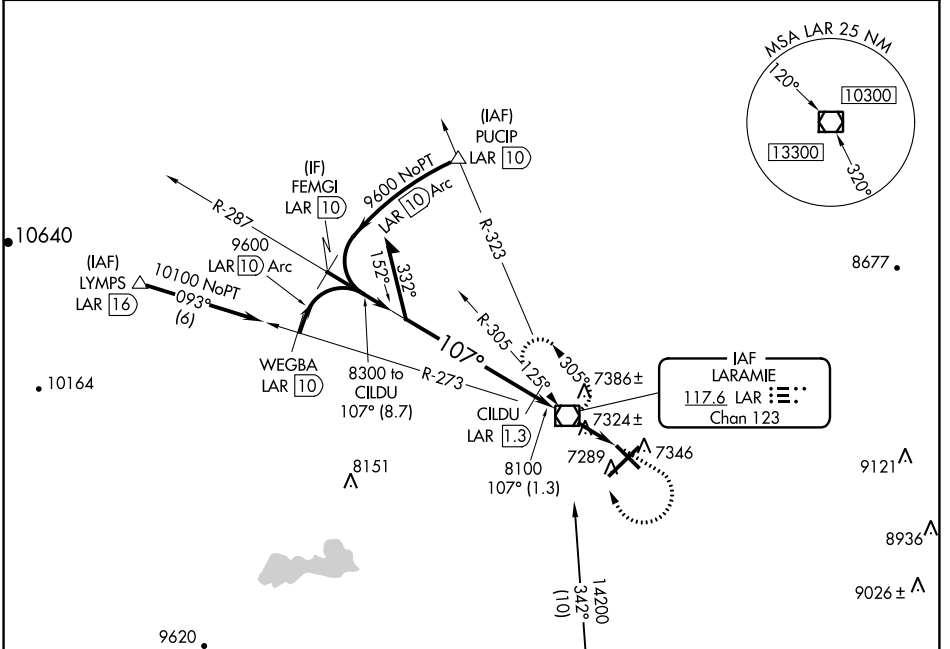
VOR/DME LAR <b>117.6</b> Chan 123	APP CRS <b>107°</b>	Rwy Idg TDZE Apt Elev	<b>6300</b> <b>7275</b> <b>7284</b>
---	------------------------	-----------------------------	---

# VOR/DME RWY 12

LARAMIE RGNL (LAR)

-35°C	<b>MISSED APPROACH:</b> Climb to 7700 then climbing right turn to 9600 direct LAR VOR/DME and hold, continue climb-in-hold to 9600.
-------	---

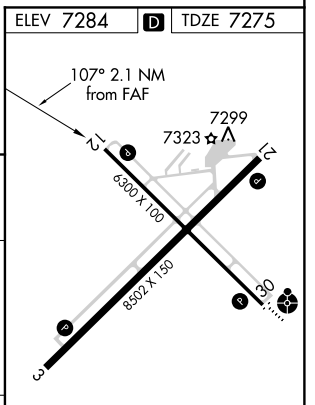
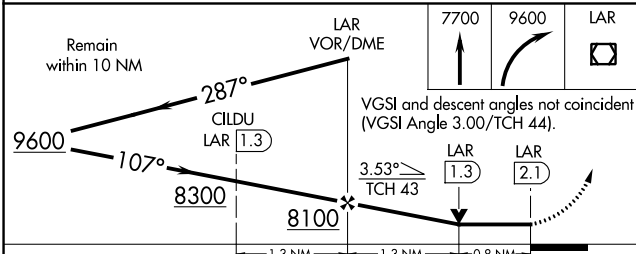
ASOS <b>135.475</b>	DENVER CENTER <b>125.9 284.7</b>	UNICOM <b>123.05 (CTAF) 0</b>
------------------------	-------------------------------------	----------------------------------



NW-1, 07 DEC 2017 to 04 JAN 2018

NW-1, 07 DEC 2017 to 04 JAN 2018

ELEV 7284	<b>D</b>	TDZE 7275
-----------	----------	-----------



CATEGORY	A	B	C	D
S-12	7580-1 305 (300-1)			
CIRCLING	7660-1 376 (400-1)	7740-1 456 (500-1)	7740-1½ 456 (500-1½)	7840-2 556 (600-2)

REIL Rwy 3, 12 and 21 **0**  
MIRL Rwy 3-21 and 12-30 **0**